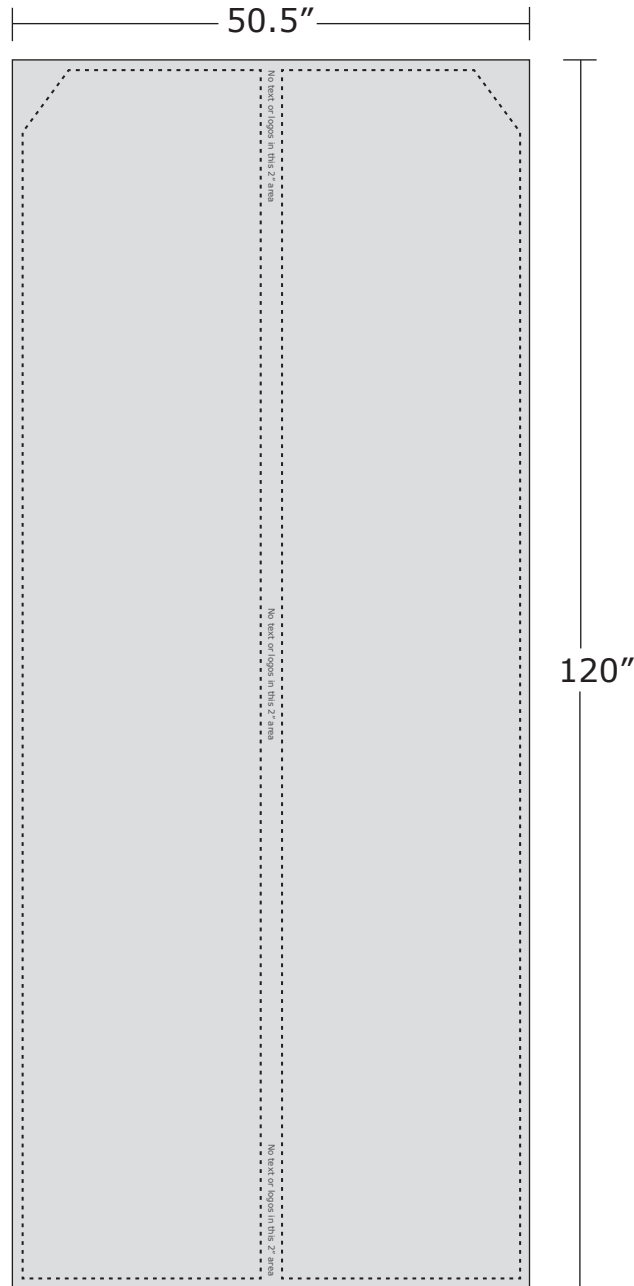


# SPECIFICATIONS FOR SUPPLYING PRINT READY ARTWORK



## **FEATHER FLAGS - 120"** **Double Sided - 25.25x120**

Total Graphic Area: 50.5" x 120"

Total Safe Area: 23.25" x 118" (each side)

Place all information in safe area 1" from edges and 4.5" from upper left corner.

There should also be no text in the center 2"

## **FILE FORMATS**

### **.JPG or .PDF**

(.ai, .psd, .eps, .tiff)

## **ART GUIDELINES**

- Files must be CMYK
- All Fonts must be created to Outlines or Supplied with your artwork
- Embed all images and support files
- Resolution must be 150 ppi at full size
- Please view your artwork at full size
- Background color / Image must extend to the edge of the artboard
- Make sure to turn off or delete all other layers on finished artwork before sending and make sure artwork is a flatten file (if using Photoshop).

## **TRANSMITTING FILES**

ONLINE: [www.postupstand.com/uploadartwork](http://www.postupstand.com/uploadartwork)

EMAIL: [sales@postupstand.com](mailto:sales@postupstand.com)