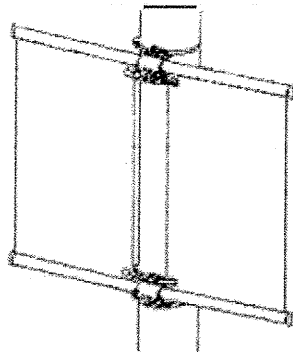
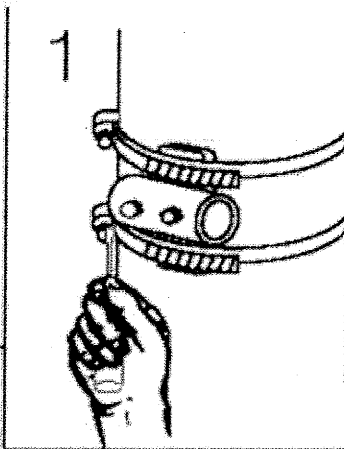
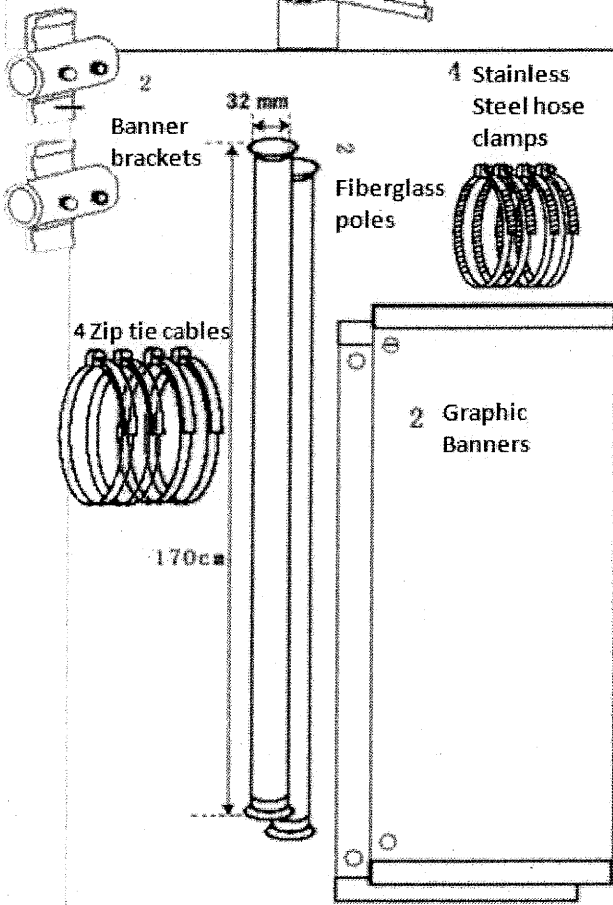


2DBBRCV Instruction Sheet

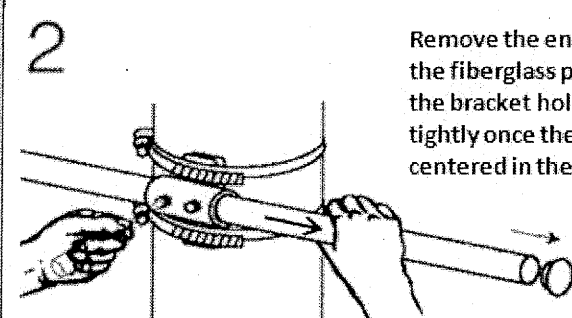
Displays2go.com



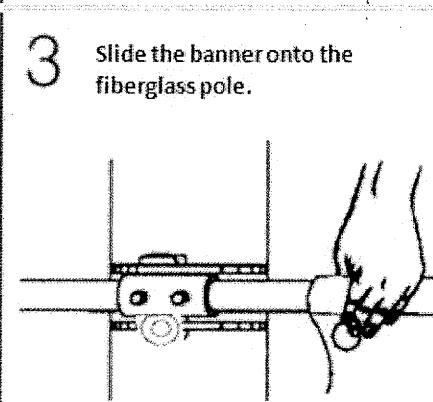
Completed Assembly



1 Place the top banner bracket at your desired height on the pole and use 2 hose clamps to tighten in place. Use a screwdriver to tighten the hose clamps if necessary.

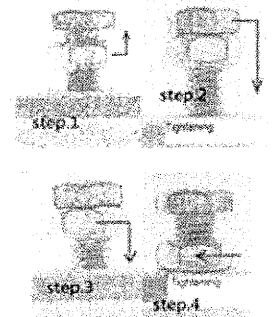


2 Remove the end cap and slide the fiberglass pole through the bracket hole and screw tightly once the pole is centered in the bracket.

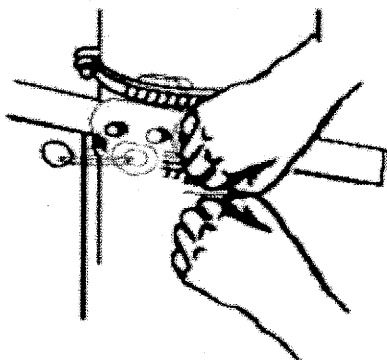


3 Slide the banner onto the fiberglass pole.

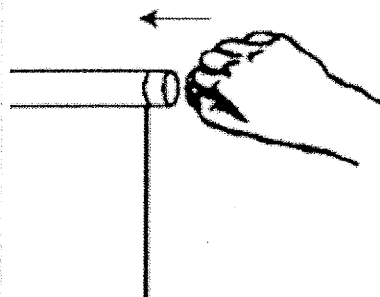
A: How to fix the Bar



4 For banner stability, run a zip tie cable through the holes found on the banner.



5 The end cap should now be placed back on the pole.



6 Repeat the same procedures for installing the bottom bracket.

