

SKU
2STFR20RS

Scan QR code to visit
the product page:

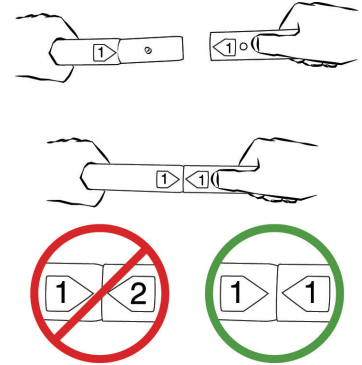


CAUTION

Before starting the assembly, wear
gloves to protect your hands.

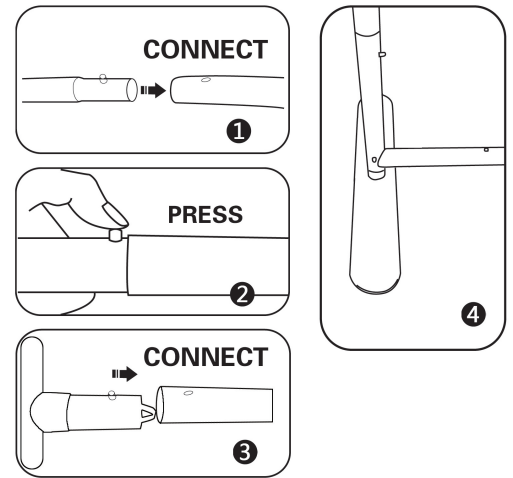
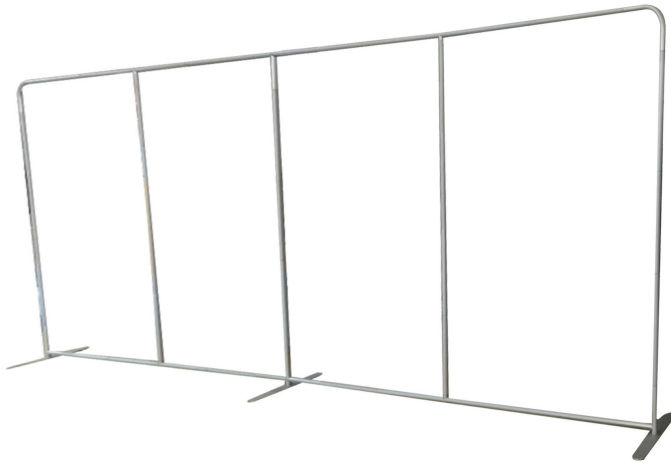


Connect tubes by matching the
numbers on the ends.

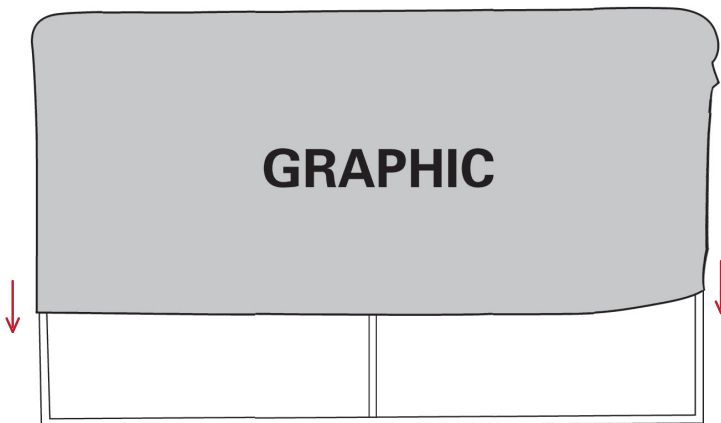


1. Snap and connect frame tubes with corner tubes by matching labels at the end of each tube.
Connect the bottom tubes with the frame assembly by using screws from both sides.

NOTE: Do not connect the feet for now.



2. Carefully lay the assembled frame on a clean surface.
Slide the printed fabric to cover the frame from the top like a pillow
case.



3. Zip the fabric along the tubes on the opening at bottom. Stretch out
the fabric if any wrinkle shows.
Assemble the feet with the backdrop body at the middle and both ends.
Carefully move the unit to its standing position. The assembly is finished.

