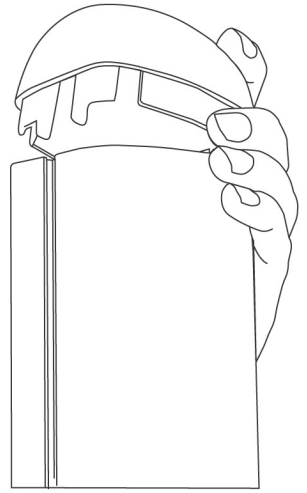
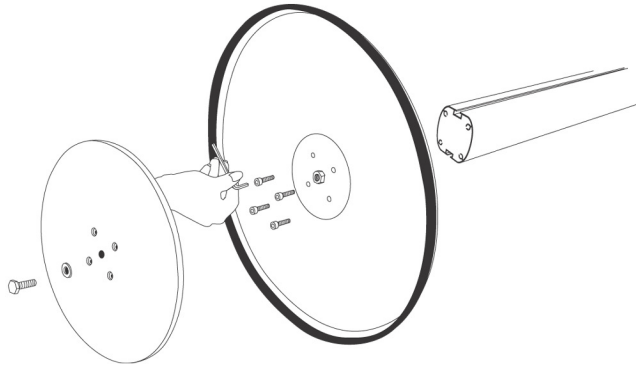
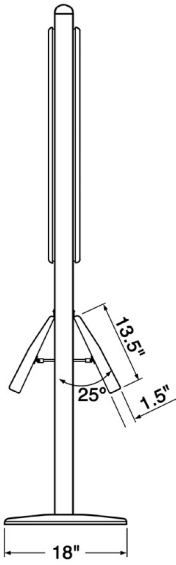
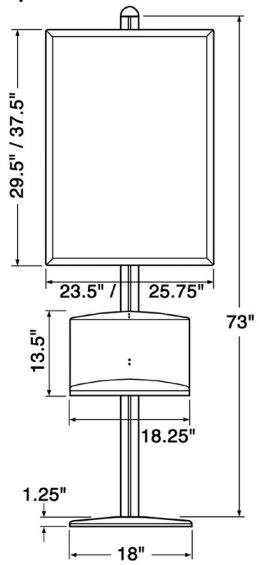


BP Series Instruction Sheet

Specifications

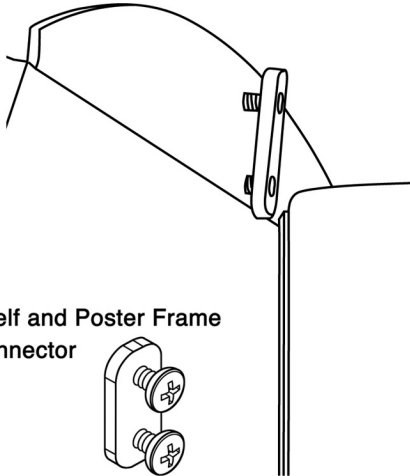


1. Connect the pole, base and weight as in the diagram

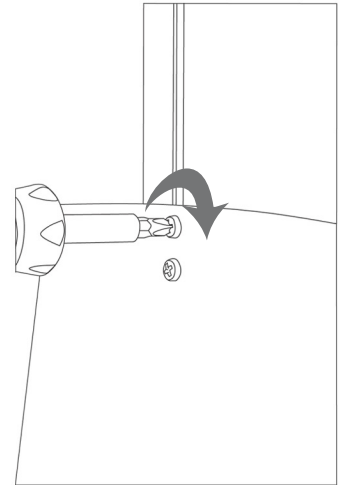
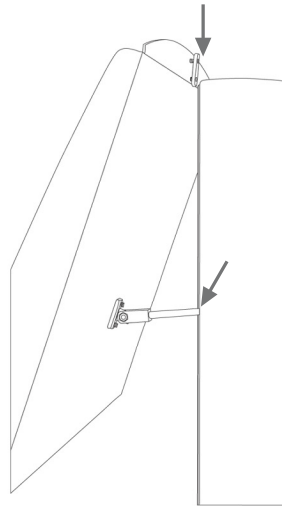
2. Remove the pole cap

*Dimensions shown for both 22" x 28" and 24" x 36" frames

Connecting a Shelf



Shelf and Poster Frame Connector

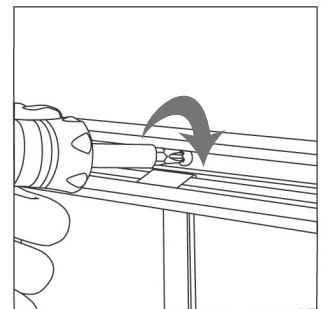
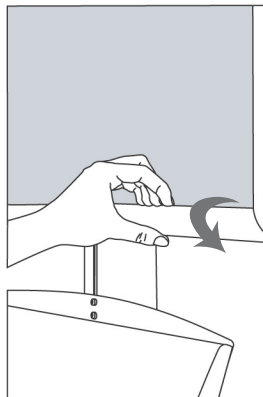
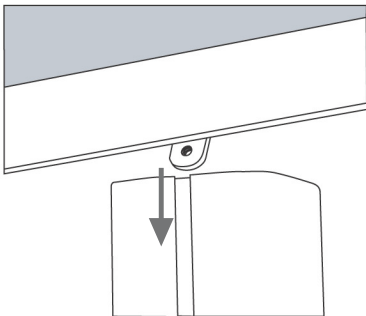


1. Loosely attach the included connector to the back side of the shelf

2. Slide the support arm (attached to the shelf) and the connector plate into the pole groove

3. Tighten the connector screws at the desired height

Connecting a Frame



1. Slide the two (2) connector plates down the groove of the pole to the desired height

2. Unsnap the horizontal portions of the frame

3. Tighten the screws at the top and bottom of the frame