

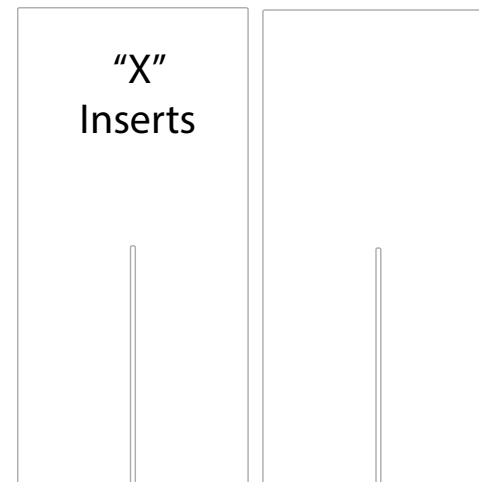
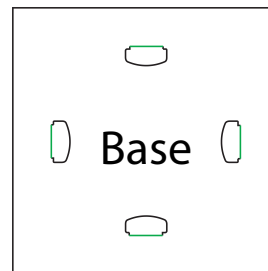
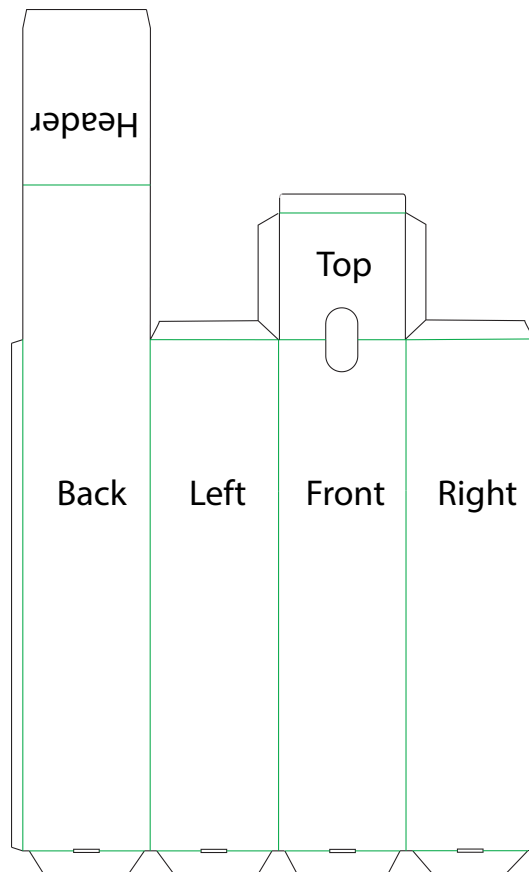
Assembly Instructions

Disposable Hand Sanitizing Pump Station

V 20.12

SKU: FGHSSPMP
FGHSSPBDL

1. Fold on all Crease. (Green Lines Below)
2. Peel off the protective film and attach the double sided tape to it's respectable area. (Unit should look like a rectangle)
3. Fold tabs on Base and attach it to the bottom of the unit.
4. Assemble 2 insert boards like an "X" and place it inside the unit. (this is your shelf floor)
5. Place the Shelf over the "X" insert.



Scan QR code to visit
the product page:



If you have any questions regarding our products, please visit us at www.displays2go.com or contact D2G customer service 844-221-3388.