



DISPLAYS2GO
CONNECTING PEOPLE & BRANDS WITH THE WORLD

48" GLASS DISPLAY CASE WITH SLIDING DOORS AND BASE CABINETS

Assembly Instructions

SKU: FRCHVWBK
V2.0



Scan the QR
code to visit the
product page.



Safety Information:

BEFORE BEGINNING ASSEMBLY, PLEASE TAKE TIME TO READ THROUGH THE INSTRUCTIONS AND UNDERSTAND EACH STEP THOROUGHLY. Displays2go is not responsible for any personal injury or product damage due to mishandling, incorrect mounting, incorrect assembly or incorrect use of this product.

2 people are required for assembly. 3 people are recommended.

Tools Needed:



Phillips Screwdriver



T20 Torx Screwdriver



Rubber Mallet

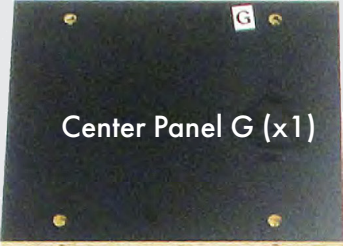
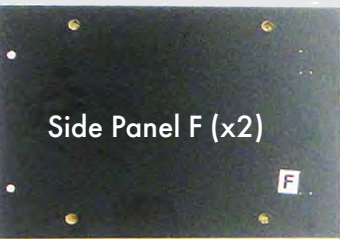
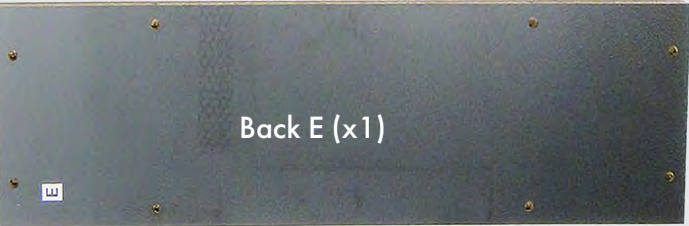
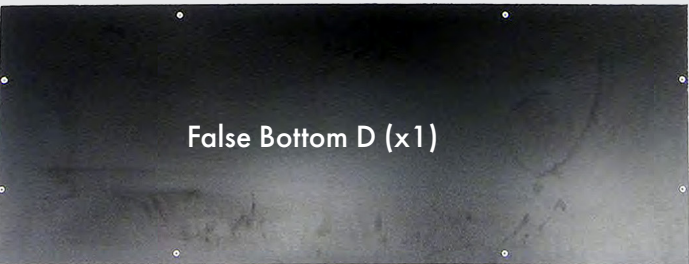
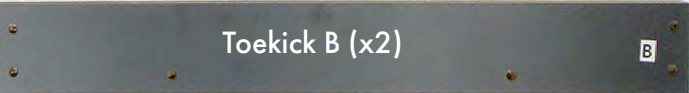
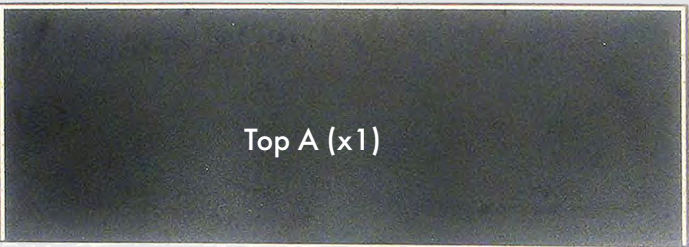


Flathead Screwdriver



Drill

Parts and Hardware



Concealed Hinge and Hardware (x4)



Doorknob (x2)



Cam screw (x36)



Cam lock (x36)



Panhead Screw #6x 1/2 (x6)



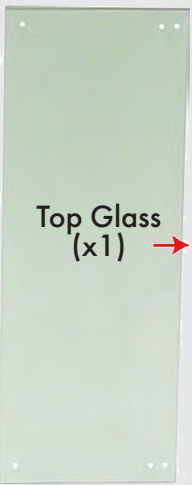
Wood Screw (x24)



Glide foot (x4)



Front Glass



Top Glass (x1)



Glass Door (x2)



Glass Shelf (x3)



Side Glass (Left, Right)



Sliding Door Roller (x2)



Lock and Hardware (x1)



Top Rail (x1)



Bottom Base Rail (x1)



Bottom Rail Insert (x1)



Corner Connector (x2)



Edge Connector (x8)



Long Torx Screw 3/4 (x28)



Short Torx Screw 1/2 (x2)



Plastic Washer (x28)



Screw Glazing (x16)



Shelf Support Peg (x12)



Door Pull (x2)



Long Glazing (x2)



Top Door Guide (x4)



Bottom Door Guide (x4)

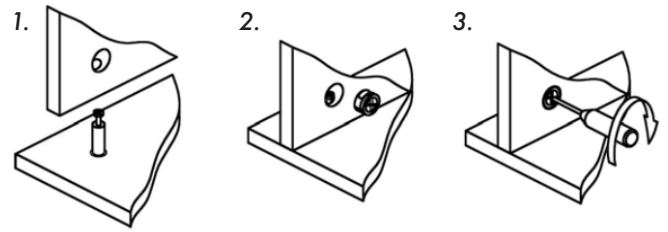
Assembly

Base Assembly

1. Insert 4 cam screws into the 4 corners of each Side Toekick Panels C boards as shown.

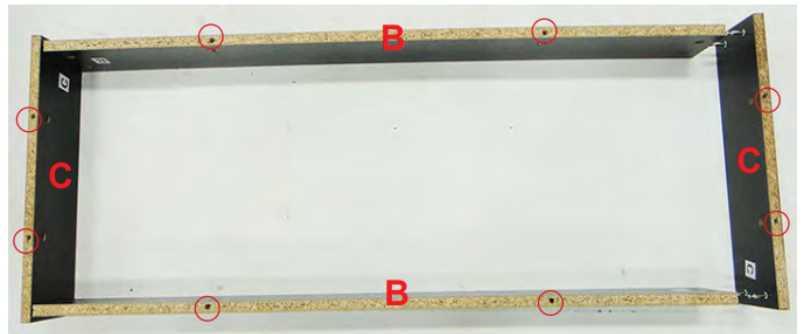
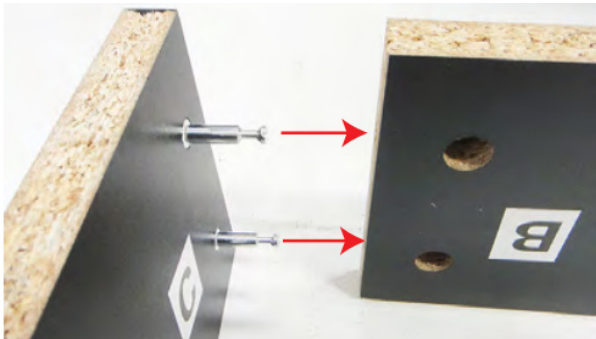


How to Join 2 Boards with Cam Locks

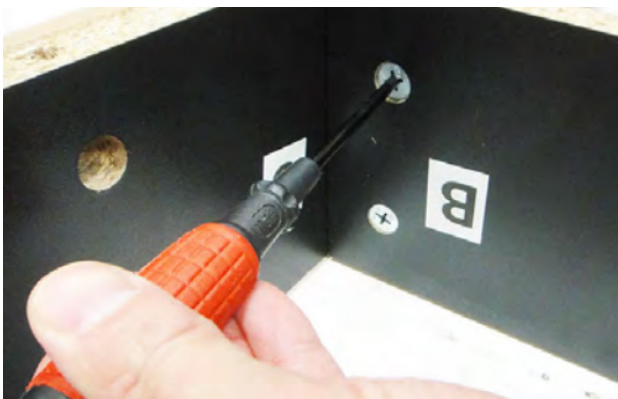


1. Insert cam screw into board, then lower the hole of the joining board over the cam screw.
2. Each cam lock has an open section on the back. Insert the cam lock into the hole of the joining board, making sure the open section is placed over the head of the cam screw.
3. Turn the cam lock clockwise with a screwdriver to lock the cam lock to the cam post. Do not over-tighten.

2. Attach Toekick Panel B to Panel C by inserting cam screws into cam lock holes.
3. Connect both Panels B and Panels C as shown. The edges with pre-drilled holes should face the same side.



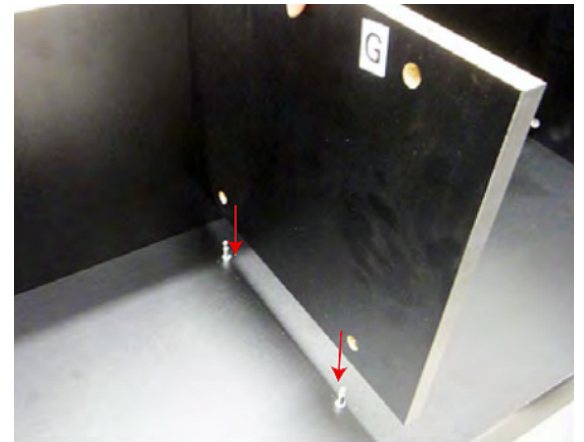
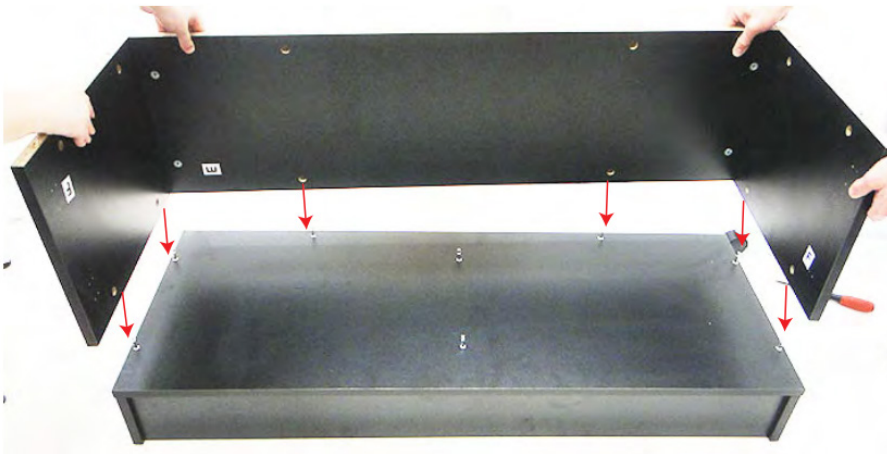
4. Insert 4 cam locks into cam lock holes on Panel B. Use a Phillips screwdriver to rotate cam locks clockwise to secure cam screws.
5. Flip connected boards over to side without pre-drilled holes. Use a rubber mallet to hammer the 4 glide feet into the boards.



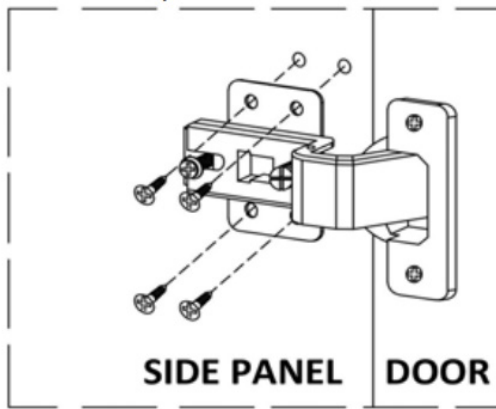
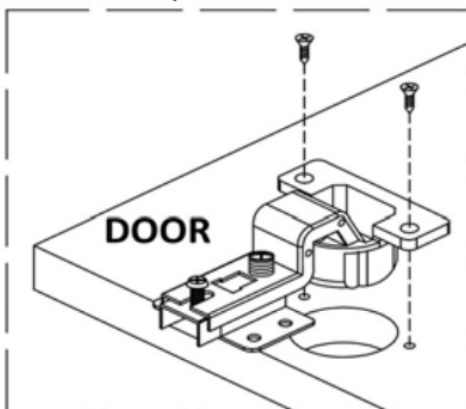
6. Lower connected boards onto False Bottom Panel D, inserting cam screws into cam screw holes. Secure with cam locks.
7. Flip connected boards over and insert 8 cam screws into pre-drilled holes of Panel D.



8. Insert 2 cam screws into each Side Panel F, then connect both boards to Back Panel E.
9. Connect assembled Panels E & F to the base by inserting cam screws into corresponding holes, then using cam locks to secure.
10. Attach Center Panel G to base using cam screws and cam locks.



11. Install concealed hinges to Door Panel H. First, press the hinge into the round pre-drilled hole of the door. Make sure the edge of the hinge is parallel to the edge of the door. Drive 2 wood screws into pre-drilled holes on either side of the hinge cup.
12. Align other side of hinge with pre-drilled holes in Panel F. Drive 4 wood screws into holes to attach the door panel.
13. Repeat on other Door Panel H.
14. Attach doorknobs to both Door Panels H with included screws from hinge hardware box.



15. Insert 8 cam screws into the underside of Top Panel A and lower onto the base. Secure with cam locks from the inside.



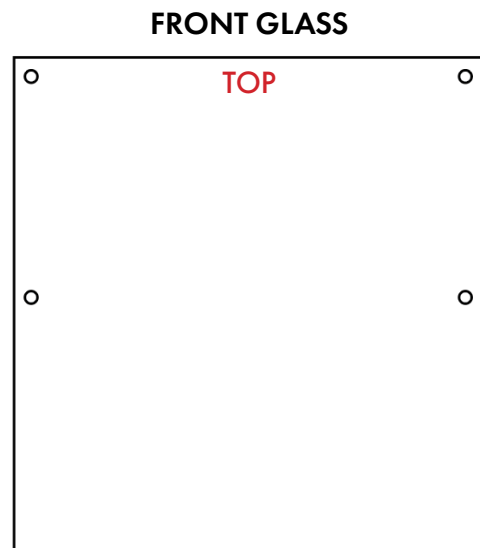
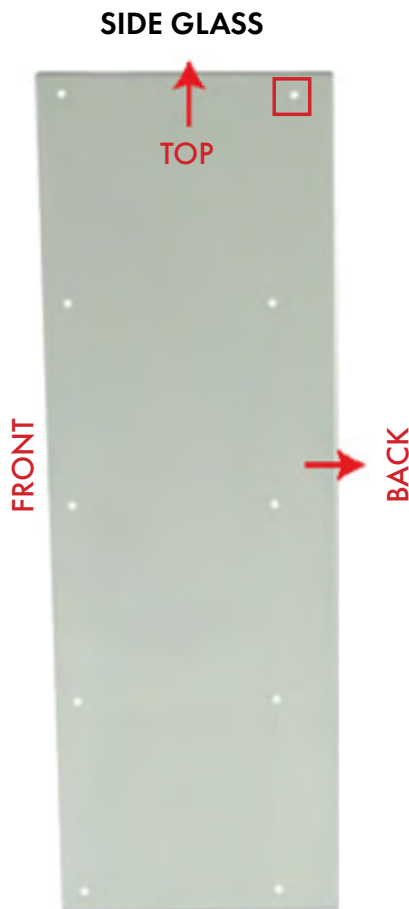
Base assembly is complete.

Glass Case Assembly

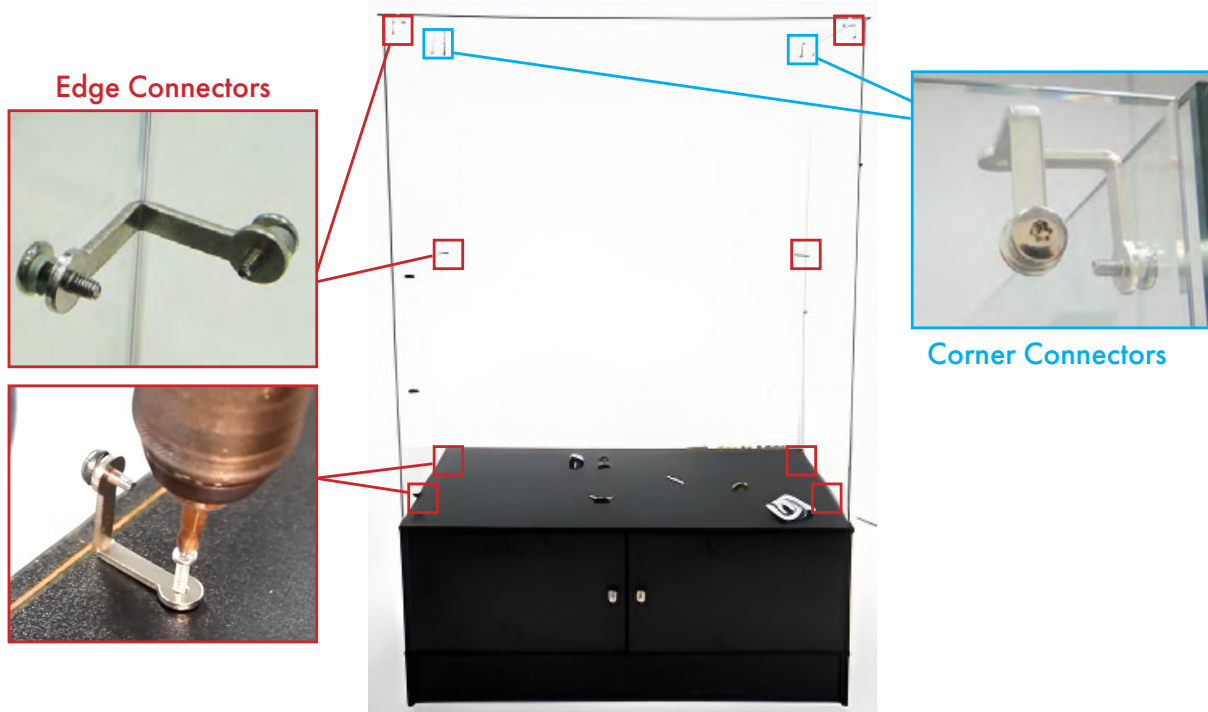
⚠ CAUTION: Handle glass panels with care!

1. First identify orientation of Left and Right Side Glass, Top Glass, and Front Glass.

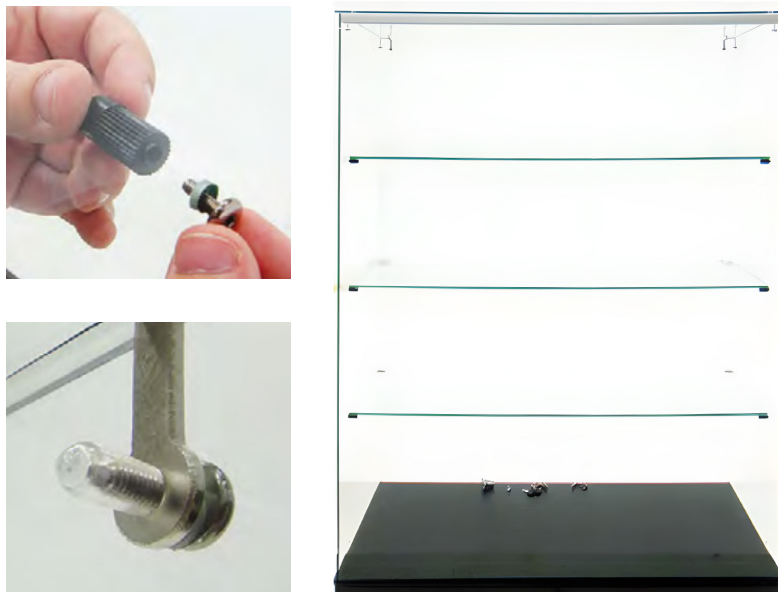
ⓘ Take care to identify the proper orientation for the left and right side glass panels, noting that the sliding glass doors are installed on the backside of the unit. The column of screw holes towards the back of the unit are farther away from the edge than the column towards the front. The first screw hole of the back column is slightly closer to the edge than the screw holes below.



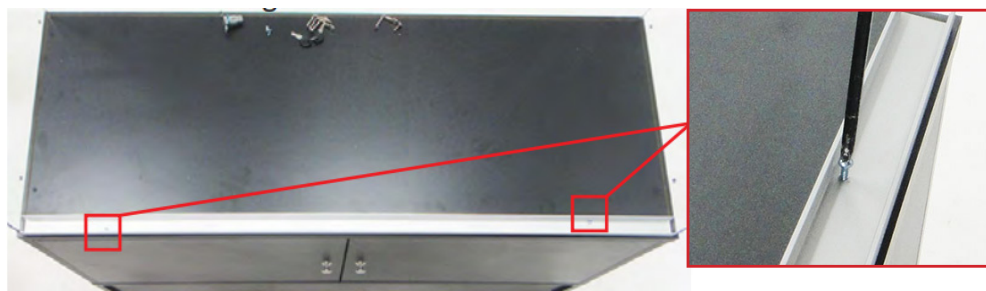
2. Place black plastic washers onto all long torx screws.
3. Carefully place Front Glass into the long groove on base and one side glass into the side groove.
4. Connect Front and Side Glass to each other with edge connectors at the center holes. Secure with long torx screws.
5. Connect Side Glass to the wood base using edge connectors. Use long torx screws to secure at glass holes and panhead screws to secure into wood base.
6. Place second Side Glass and connect to front glass and base using the same method.
7. Carefully lift and place the Top Glass on top of side and black glass. Secure Top Glass to Front and Side Glass using 2 corner connectors and long torx screws.
8. Connect Top Glass to both Side Glass panels using edge connectors and long torx screws.



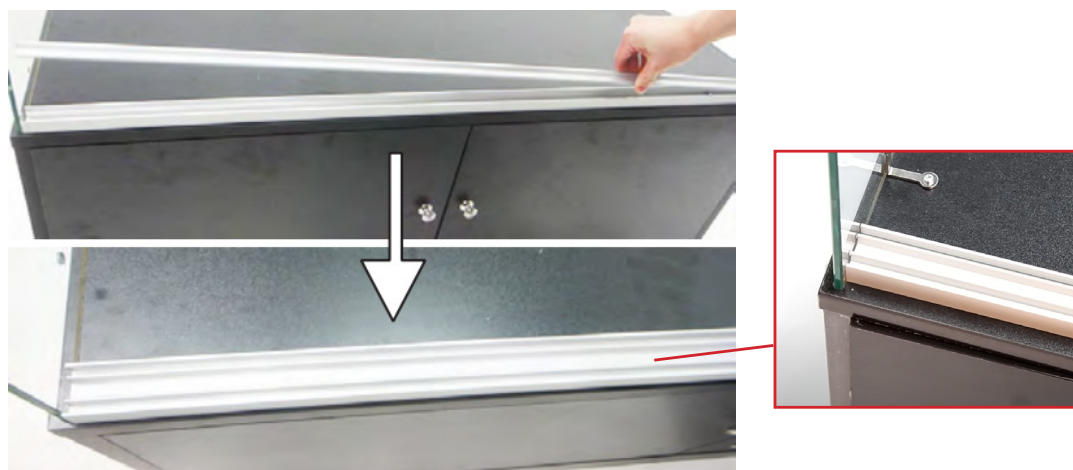
9. Insert long torx screws through holes of both Side Glass panels and add shelf support pegs to each torx screw.
10. Apply clear screw glazings to remaining interior screws to protect glass shelves.
11. Carefully place the 3 glass shelves onto shelf support pegs.



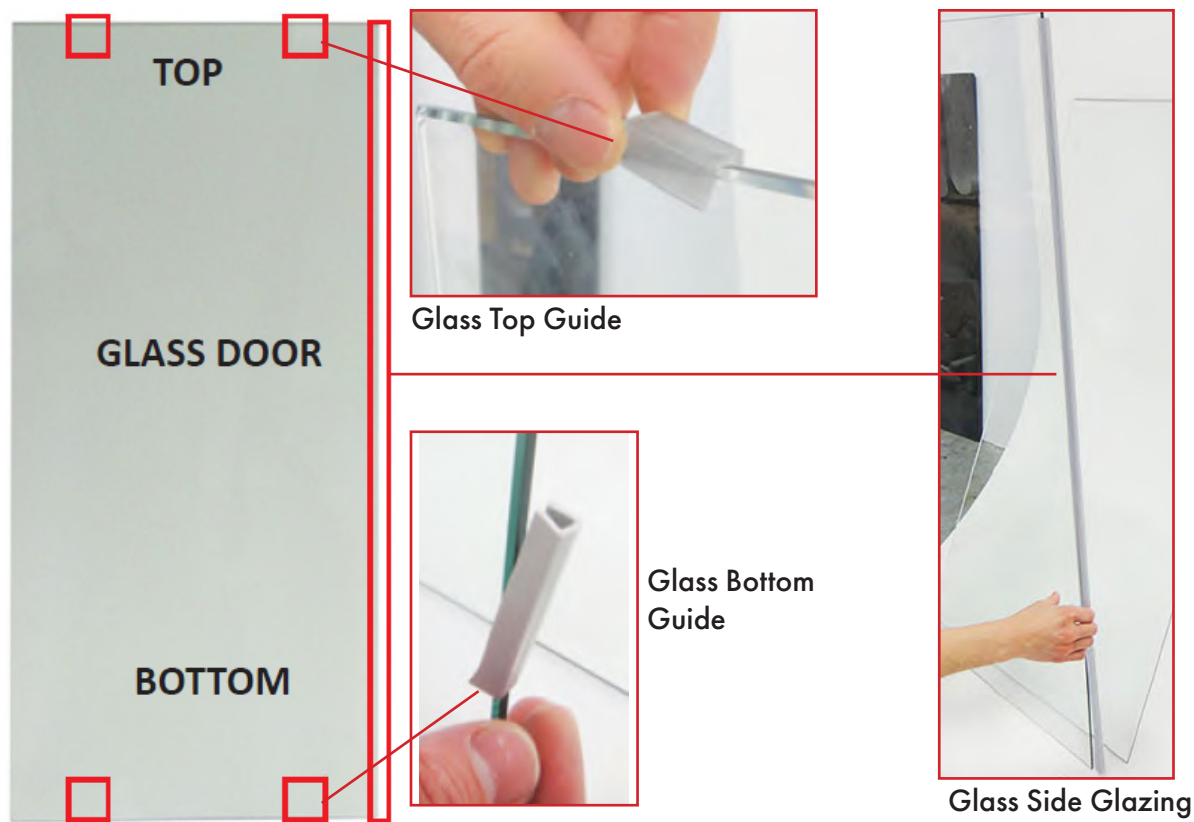
12. Install Bottom Base Rail to the assembled base using drill and panhead screws.



13. Snap Bottom Rail Insert into bottom base rail, using rubber mallet as necessary.



14. Install Long Glazings, Top Door Guides, and Bottom Door Guides to the glass doors, as shown below.



ⓘ **Note:** Use a rubber mallet to firmly install the glass side glazing.

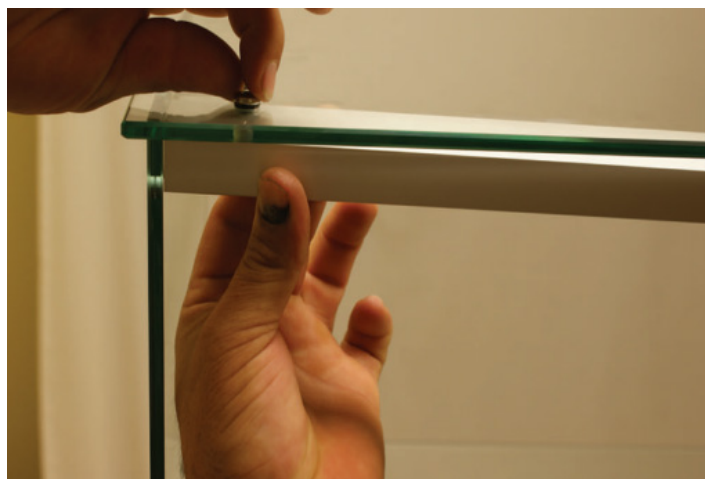
15. Add a Sliding Door Roller to the bottom of each glass door, using a rubber mallet to secure over bottom door guides.



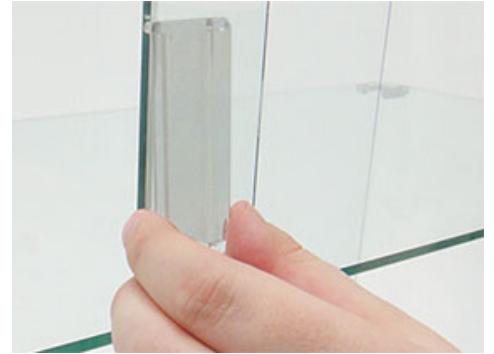
16. Insert the lock through the front of the sliding door roller. Place washer and secure with 2 panhead screws from the back, included in the lock hardware box.



17. Align Top Rail with first set of pre-drilled holes on top glass. Attach with long torx screws, partially tightening both torx screws first. Once both are inserted, fully tighten the screws.



18. Insert glass door by setting wheels into the bottom rail. The glass door with the lock should be in the first channel, while the door without the lock should be in the second channel. Tilt the door and insert into top railing, then set down to insert into bottom railing.
19. Repeat on other door.
20. Attach Door Pull to glass doors.



**Assembly is
complete.**



If you have any questions regarding our products, please visit us at www.displays2go.com or contact Displays2go customer service at 844-221-3388.