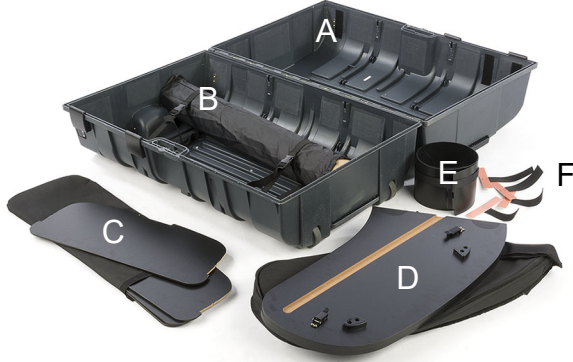


Assembly Instructions

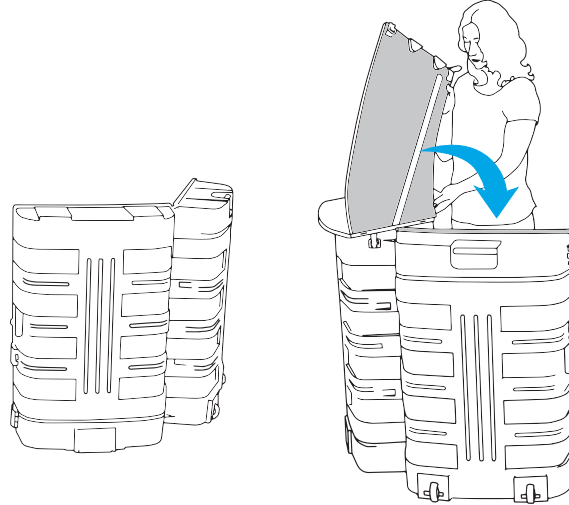
BMRCNTB2 - Convertible Counter Case - Duo

Parts List:	QTY.
A. Shipping Case	2
B. Custom Graphics*	1
C. Shelf	8
D. Countertop	2
E. PVC Kickplate	1
F. Hook and Loop Strip	4

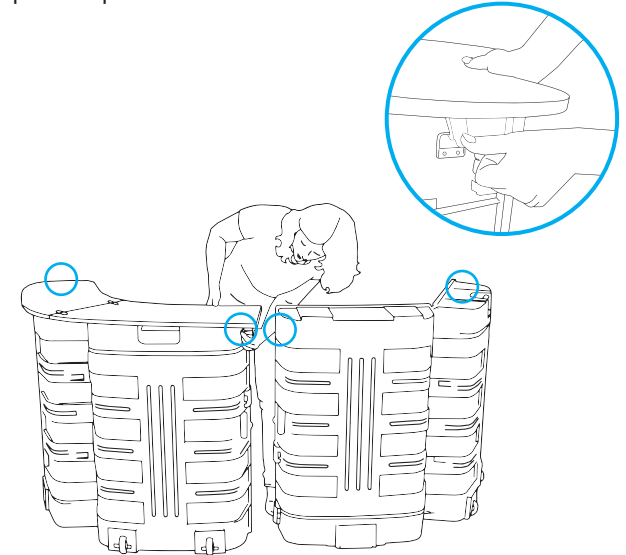


*if ordered the counter with graphics.

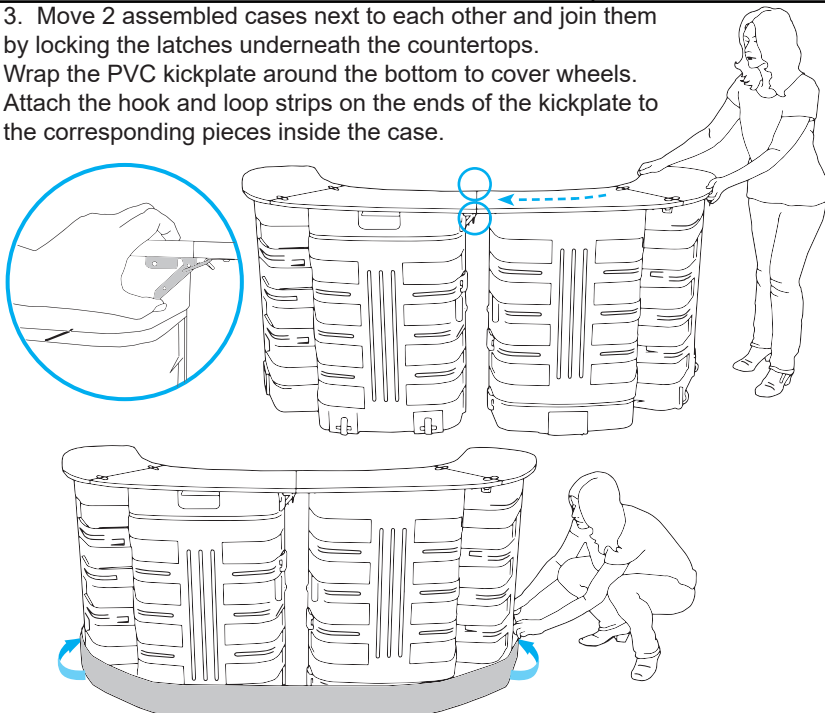
V20.11 1. Unlock 4 clips on the side and open the case. Remove all parts inside and stand the case on the floor with wheels at the bottom. Lift up all latches on the countertop and then align underside groove with the corresponding edge on top of the case.



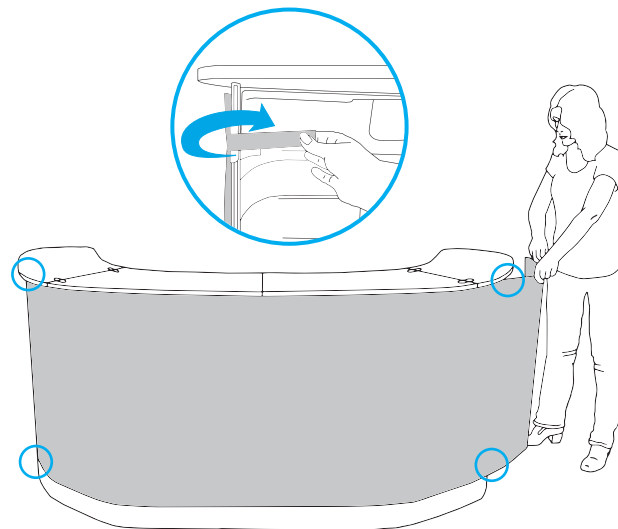
2. Secure underside latches to hooks attached to the side of the case. Repeat Step 1 & 2 on the other side.



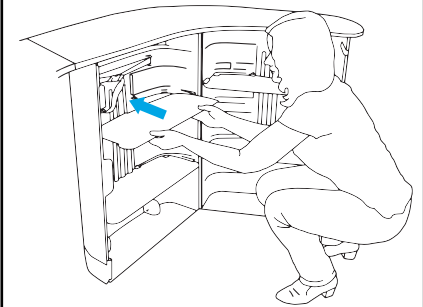
3. Move 2 assembled cases next to each other and join them by locking the latches underneath the countertops. Wrap the PVC kickplate around the bottom to cover wheels. Attach the hook and loop strips on the ends of the kickplate to the corresponding pieces inside the case.



4. To attach the printed graphics, remove the protective paper on the adhesive backing of 4 hook and loop strips and apply to the back side of the graphics. Be sure the attached strips match with corresponding pieces inside the case. Insert the graphics panel inside the kickplate and attach the hook and loop strips to the case.



5. Insert shelves at the desired slots inside the case. The assembly is finished.



Scan QR code to visit the product page:

