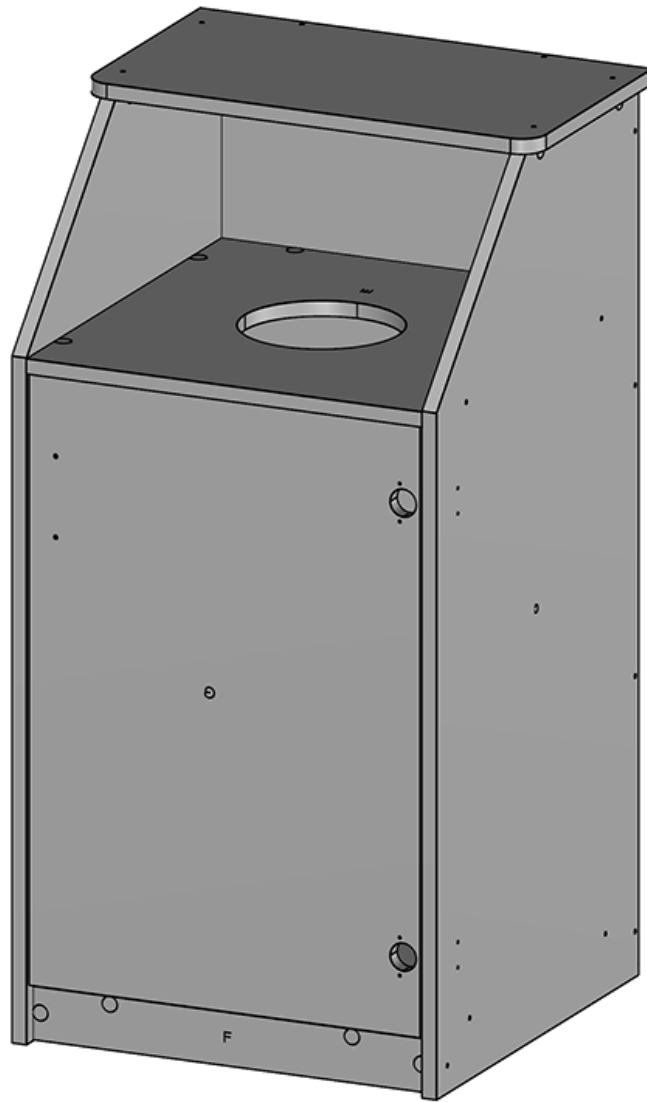




DISPLAYS2GO

CONNECTING PEOPLE & BRANDS WITH THE WORLD



SKU: LCKDTLCSBK2, LCKDTLCSSM2, LCKDTLCSMP2

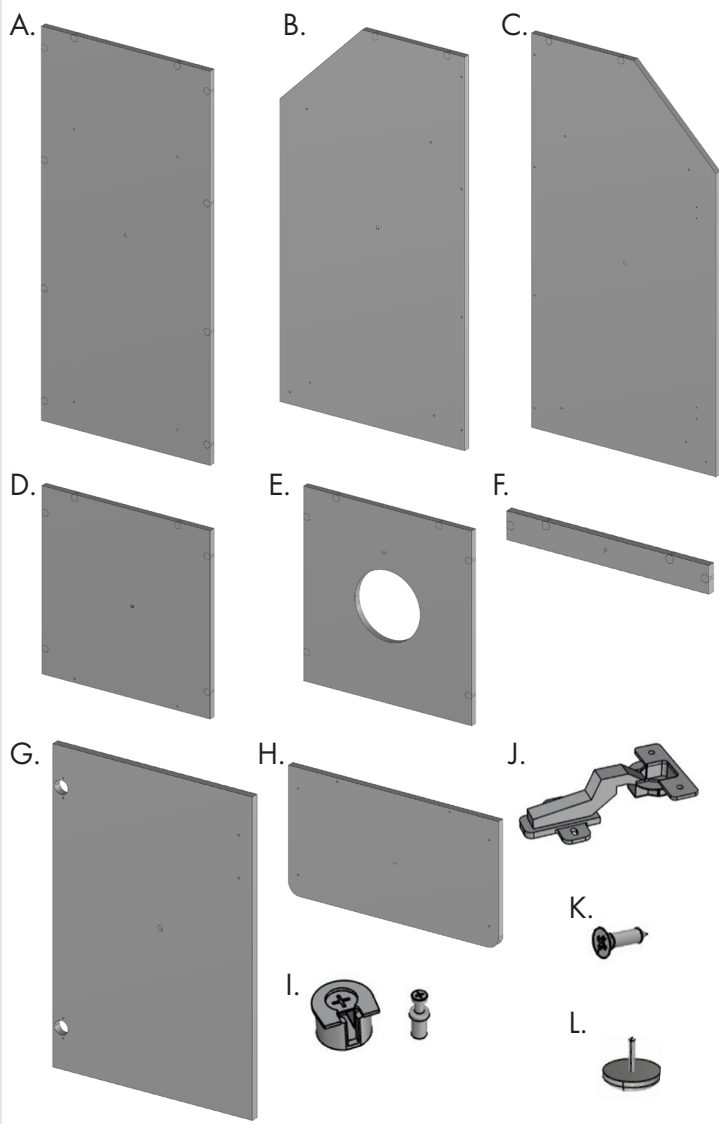
TRASH RECEPTACLE CIRCULAR TOP OPENING

Assembly Instructions

PARTS LIST



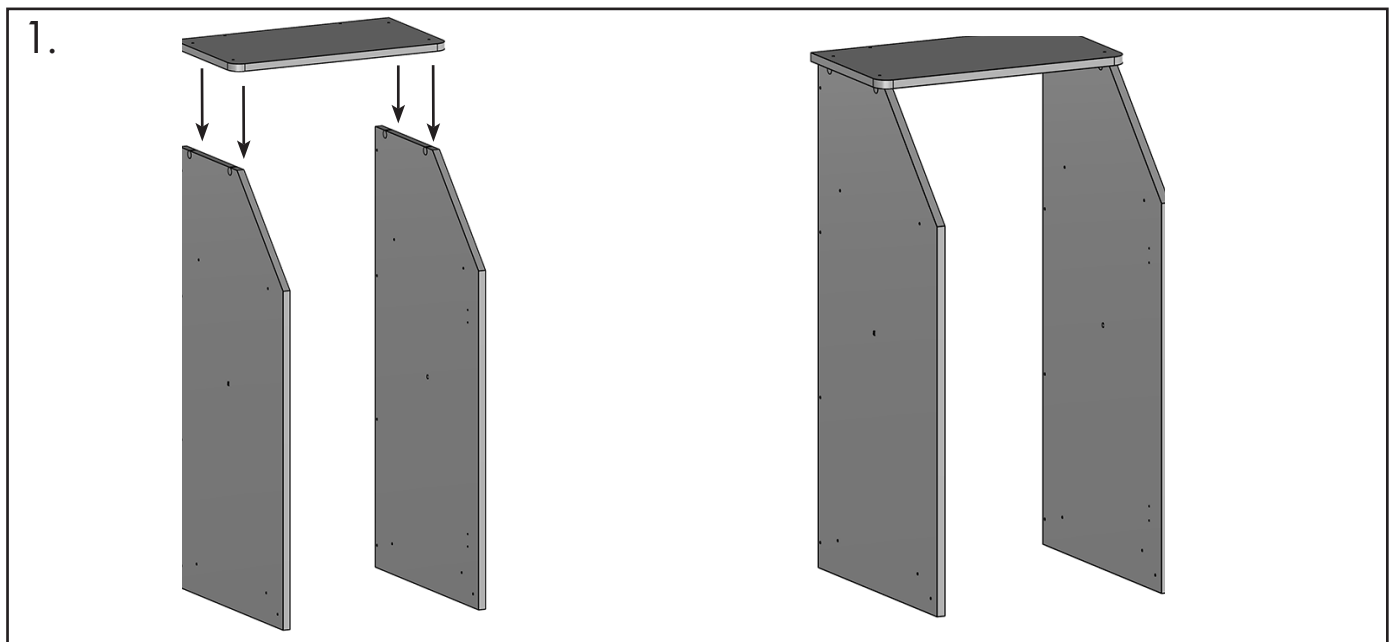
Scan QR code
to visit product
page



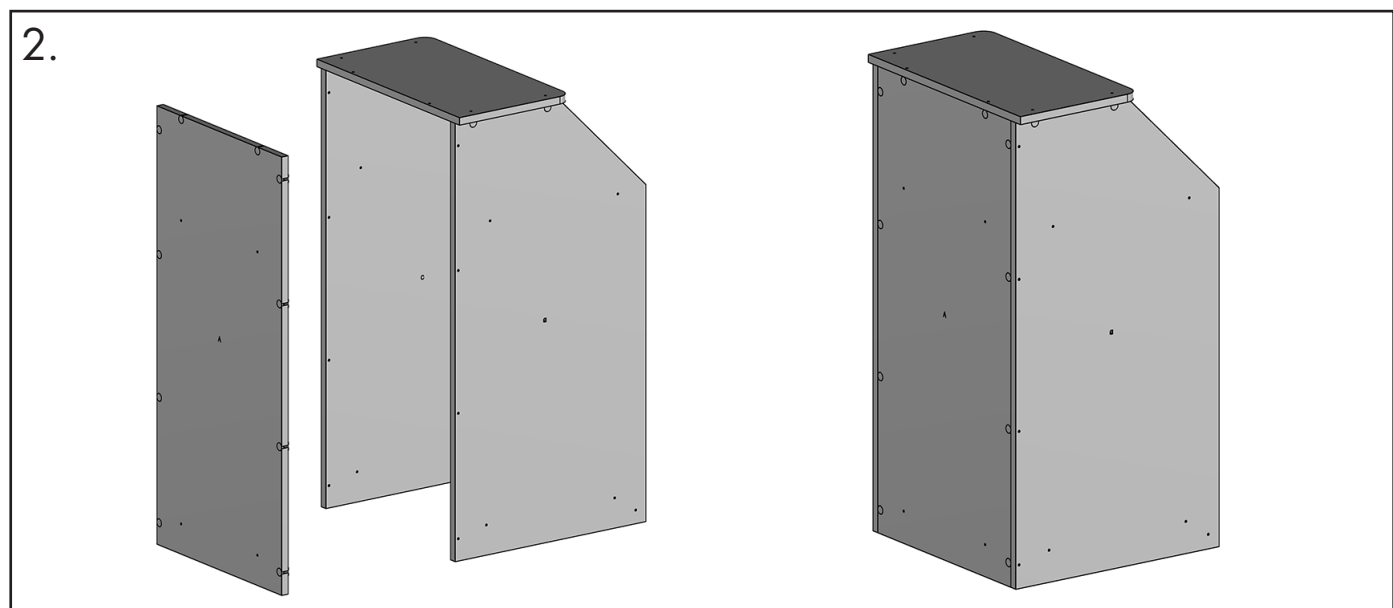
PART	QUANTITY
A: Back Panel	1
B: Left Panel	1
C: Right Panel	1
D: Bottom Panel.....	1
E: Loading Panel	1
F: Kicker Panel.....	1
G: Door.....	1
H: Top Panel	1
I: Cam Lock and Screw	30
J: Door Hinge	2
K: Screw.....	8
L: Plastic Glide.....	4

If you have any questions regarding our products, please visit us at www.displays2go.com or contact Displays2go customer service at 844-221-3388.

Before assembling the unit, insert all cam screws into pre-drilled holes and press all cam locks into cam lock holes in the panels. To lock the cams together, slide the cam post into the opening in the cam and with a Philips head screwdriver, turn the cam clockwise to lock in place.

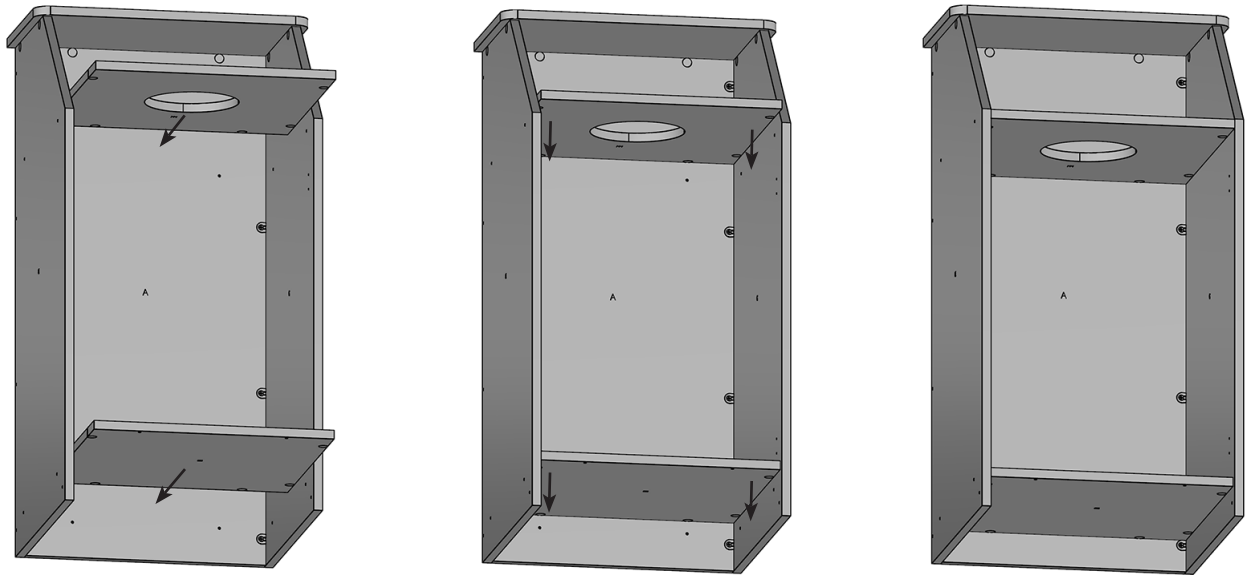


1. Connect the top panel (H) with 2 side panels (B&C) by locking the cam locks with cam screws.



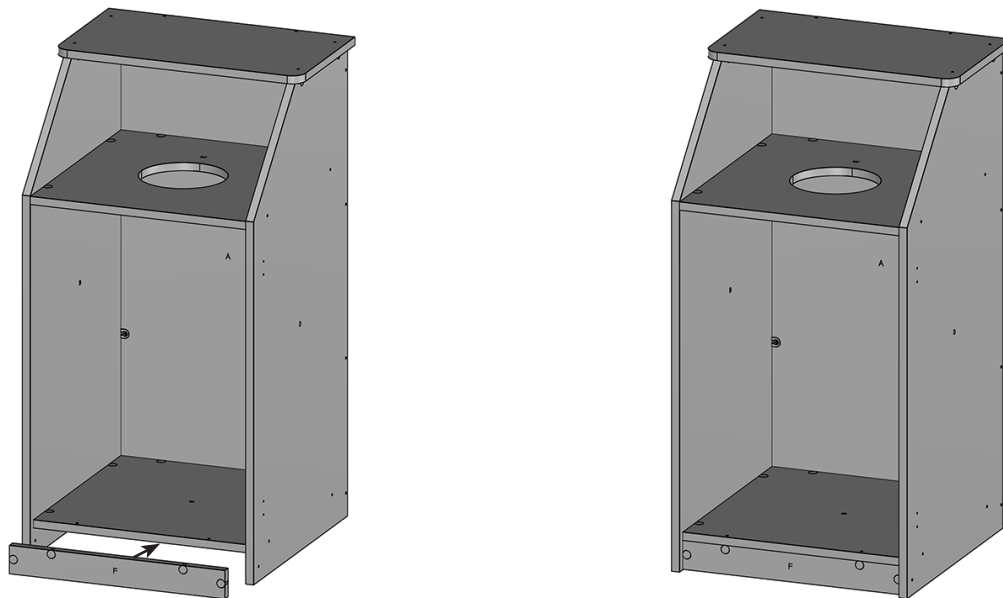
2. Connect the back panel (A) with the panel assembly finished in Step 1.

3.

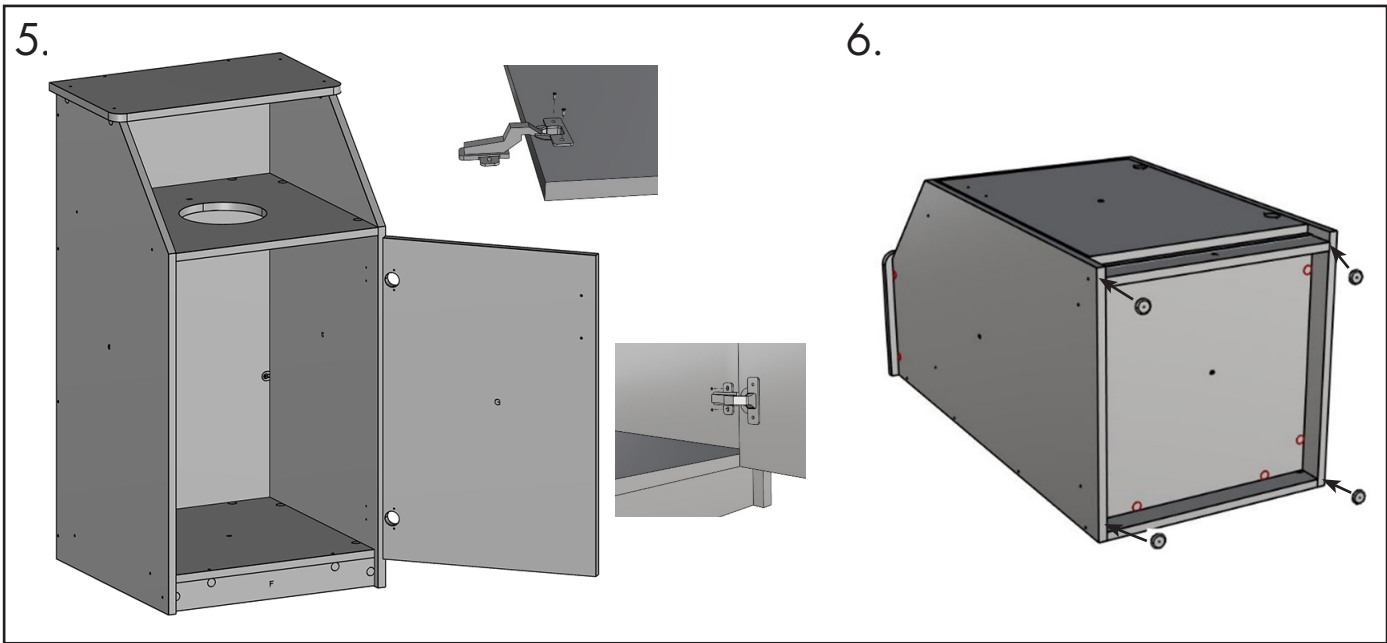


3. Insert the loading panel (E) in between 2 side panels and slide down as shown. Turn cam locks clockwise to fix. Do the same to the bottom panel (D).

4.

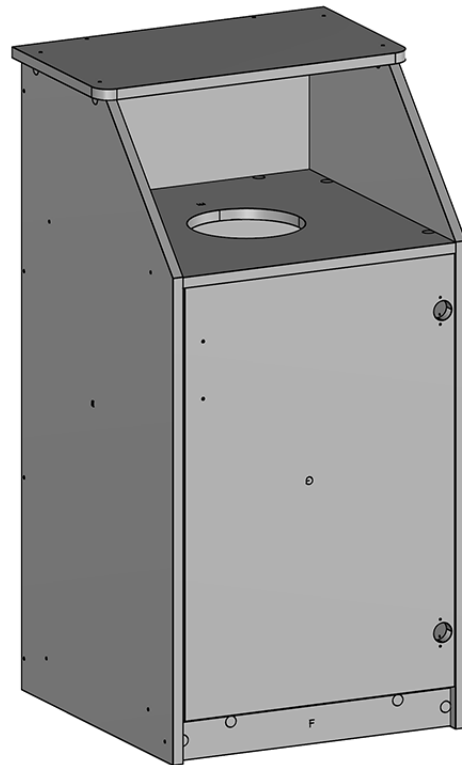


4. Attach the kicker panel (F) to the bottom as shown, and fix the panel by tightening the cam locks.



5. Attach hinges to Door (G) using pointed screws. Attach the door to the side panels.
6. Insert glides (L) to the bottom of the side panels and middle panel and use a rubber mallet as needed.

*Enjoy your
new product!*



CONTACT INFORMATION:
www.displays2go.com
PHONE: 844-221-3388