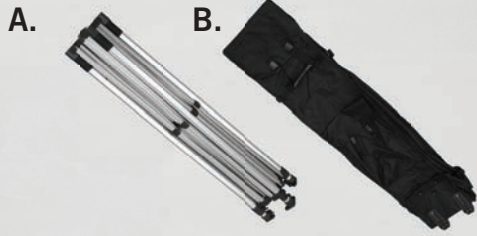


ADVERTISING TENT PLUS

Assembly Instructions | R1.060215

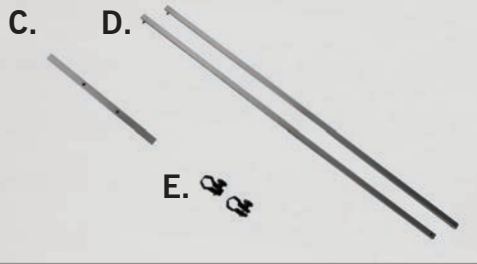
DISPLAYS2GO

PARTS LIST

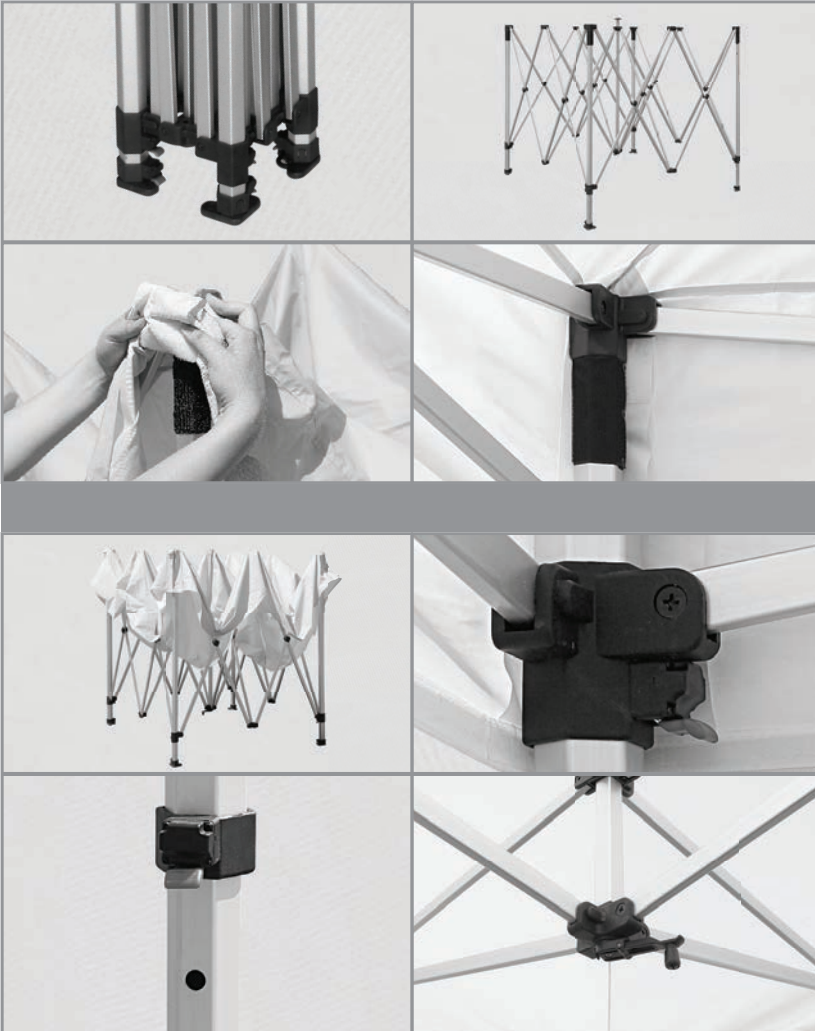


- A. Frame
- B. Carrying Case*
- C. Middle Support Pole*
- D. Support Poles*
- E. Clamps*

* Optional



ASSEMBLY INSTRUCTIONS



NOTE: It is recommended to use at least two people for the tent assembly.

1. Place the frame (A) at the desired location for assembly. Make sure the feet of the frame (A) are on the ground.
2. Expand the frame (A) outward, but not fully, and drape the canopy over the frame (A) on top. Make sure the canopy is facing the correct direction and the corners of the fabric line up with the correct corners on frame (A).
3. Wrap the hook-and-loop straps, located inside the canopy, around all the main posts on frame (A).
4. Completely expand frame (A) outward. The locking clips will snap into place to indicate full expansion of frame (A).
5. Extend the legs of the tent to the desired height. Make sure the locking clips snap into place.
Tips: Standing on base during this step makes it easier.
6. Extend the canopy to full height by using the rooftop crank adjustment. It will also tighten the canopy to a wrinkle-free display.



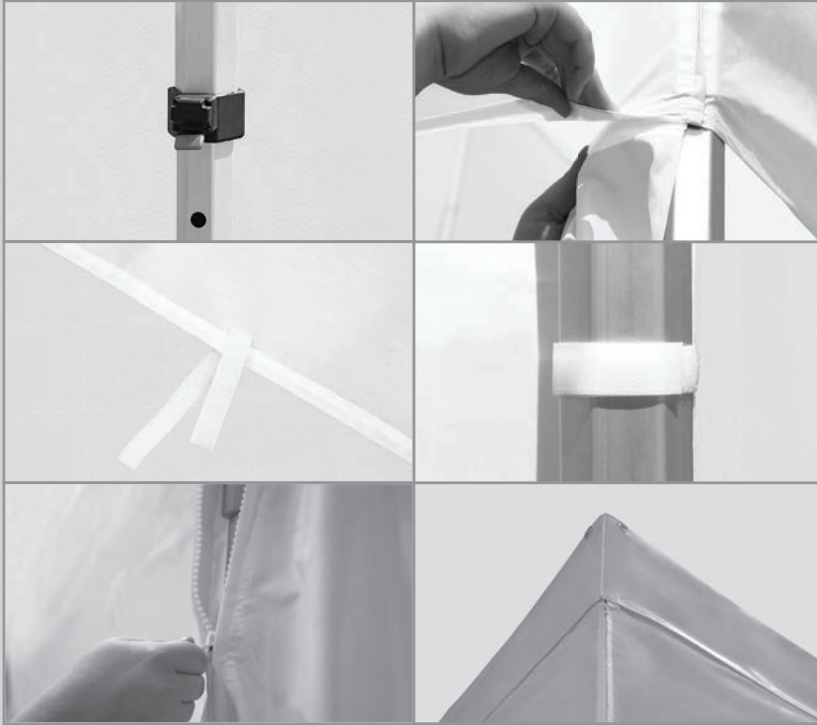
Do not display your Advertising Tent in extreme winds and/or thunderstorms. Do not display near overhead wires. User must read and observe Assembly Instructions. If this is not done correctly, it may result in damage to the unit, injury, or death, and all warranties will be void. All warranties will be void if the Advertising Tent's hardware is used with any print not produced by us.



ADVERTISING TENT PLUS

Assembly Instructions | R1.060215

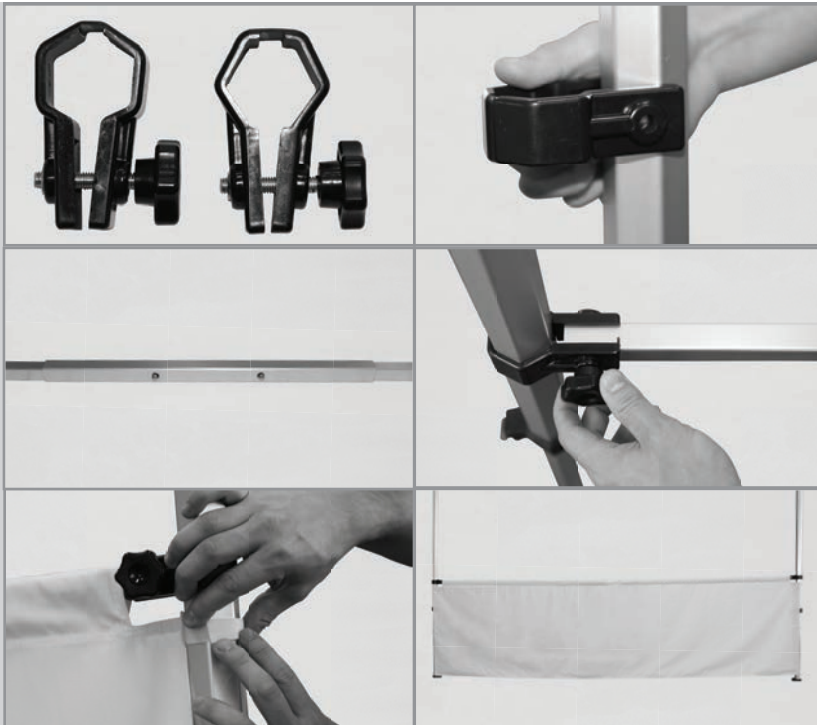
ASSEMBLY OF WALL(S) - OPTIONAL



NOTE: When adding the wall(s) to the tent, the legs on the frame (A) must be at their maximum extension height.

1. Attach the wall(s) to the valance on the tent roof using the hook-and-loop straps.
2. Secure the sides of the wall(s) by wrapping the hook-and-loop straps around the tent legs.
3. If the tent wall features zippers, walls can be connected by closing the zipper from bottom to the top.

ASSEMBLY OF HALF WALL(S) - OPTIONAL



NOTE: If attaching two or more half walls, you MUST stagger the height of ADJOINING half walls.

1. Slide one support pole (D) with the push button into the middle pole (C). The push button should snap through the near side hole. Assemble the second support pole (D) the same way.
2. Slide the half wall support bar into the pole sleeve on the wall fabric. The support bar should go through the entire pole sleeve, with both ends of the pole sticking out from the pole sleeve.
3. Attach the half wall clamps. Unscrew the knobs completely from the clamps (E) and use 2 separated pieces of the clamp to sandwich one tent leg.
4. Place the one end of the support bar through the opening of the clamp and line up the pre-drilled holes. Insert the thumb screw into the open holes and hand tighten the knob. Assemble the second clamp and support pole the same way on the other end.
5. Secure the hook-and-loop straps of the half walls around the tent legs.

If you have any questions regarding our products, please visit us at www.displays2go.com or contact D2G customer service 844-221-3388.



Do not display your Advertising Tent in extreme winds and/or thunderstorms. Do not display near overhead wires. User must read and observe Assembly Instructions. If this is not done correctly, it may result in damage to the unit, injury, or death, and all warranties will be void. All warranties will be void if the Advertising Tent's hardware is used with any print not produced by us.

