

STANDARD FLEXPOST™ ANCHORING INSTRUCTIONS FOR ASPHALT

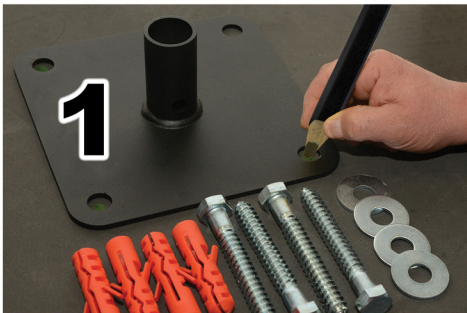
Tools Required:

- Rubber Mallet
- Wax Pencil / Marker
- 3/4" Masonry Drill Bit
- 15/16" Ratchet

Parts Included:

- 1 Base Plate
- 4 Expansion Plugs
- 4 Hex Lag Screws
- 4 Flat Washers

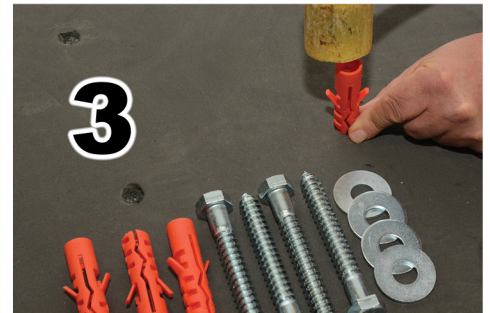
WARNING: MUST ANCHOR UNIT ON THE SAME LEVEL AS THE PARKING LOT FOR PROPER FUNCTIONALITY



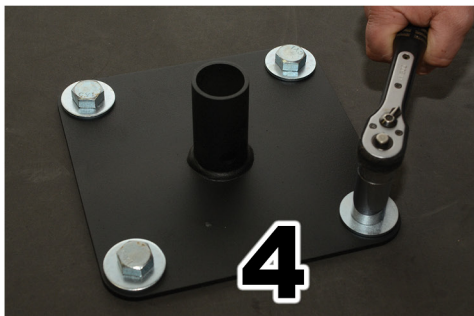
- Place base plate in desired anchoring location
- Mark the four base holes with a wax pencil



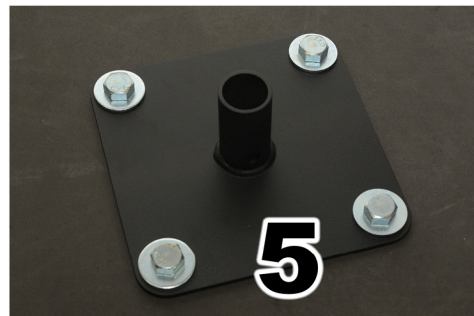
- Using a 3/4" masonry bit, drill 5" in depth



- Use a rubber mallet or hammer to stuff expansion plugs into the drilled holes
- The top of each expansion plug should be flush with the asphalt



- Place the base plate over the four holes and use a socket wrench with a 15/16" drive to thread all four hex lag screws



- Make sure all four hex lag screws are screwed down tightly



2236 112th Ave, Suite 80
Holland, MI 49424
616-928-0829 • www.FlexpostInc.com