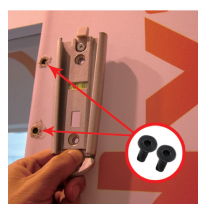
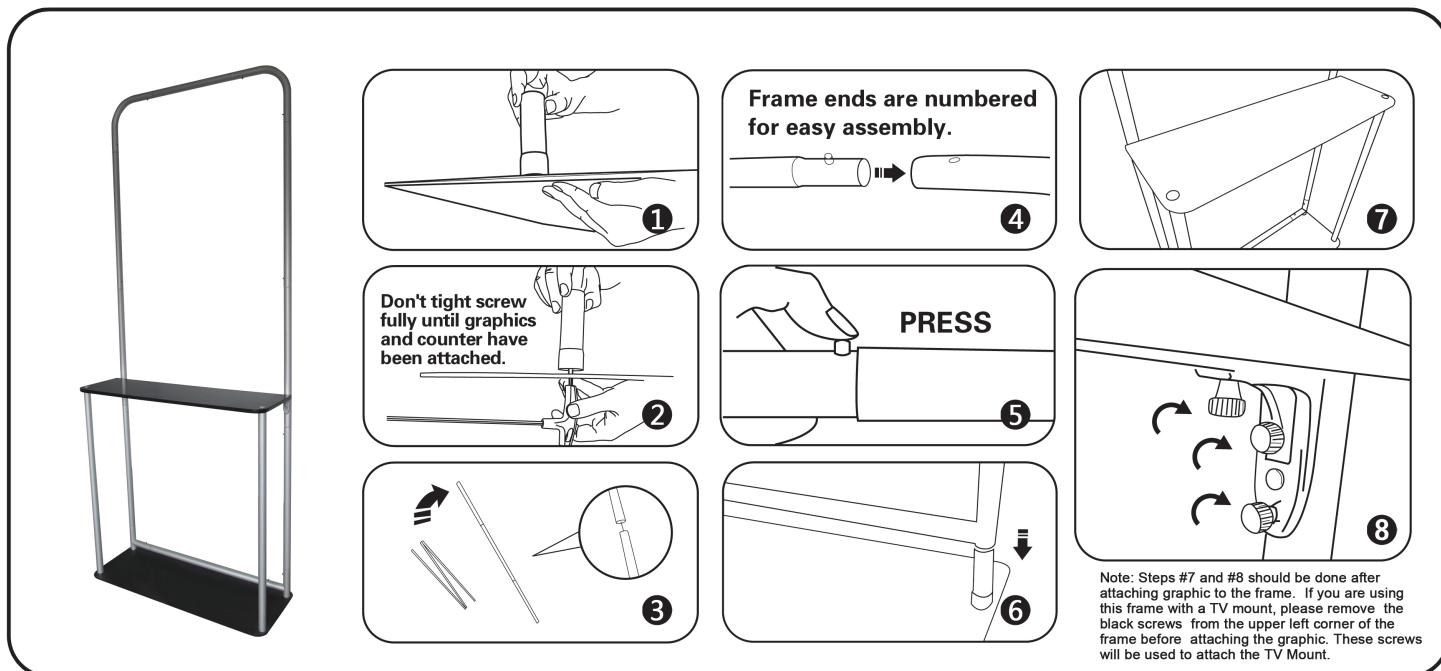


# ASSEMBLY INSTRUCTION

## TRDSHKIOFM: Tradeshow Kiosk Frame



If using TRDSHTVM with this frame, please remove screws from frame before attaching graphic. These screws will be used to attach the TV Mount after the graphic has been

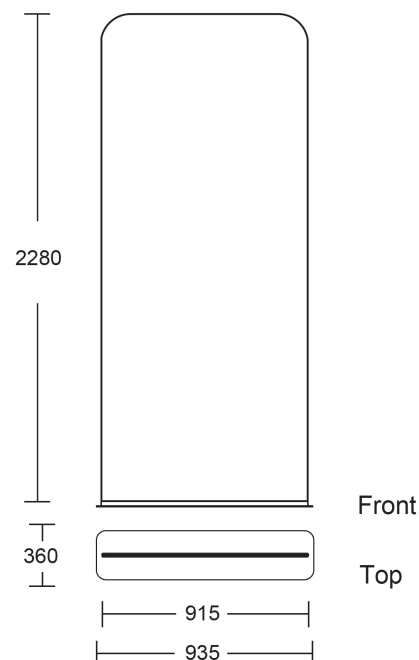
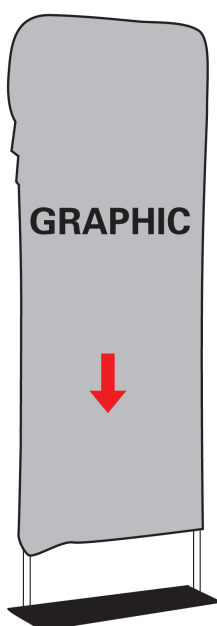


Image above shows the tradeshow kiosk frame (TRDSHKIOFM) with TV Mount (TRDSHTVM) and graphic. Graphics and replacement graphics are available single sided and double sided.

Graphic Size : W940mm x H2280mm