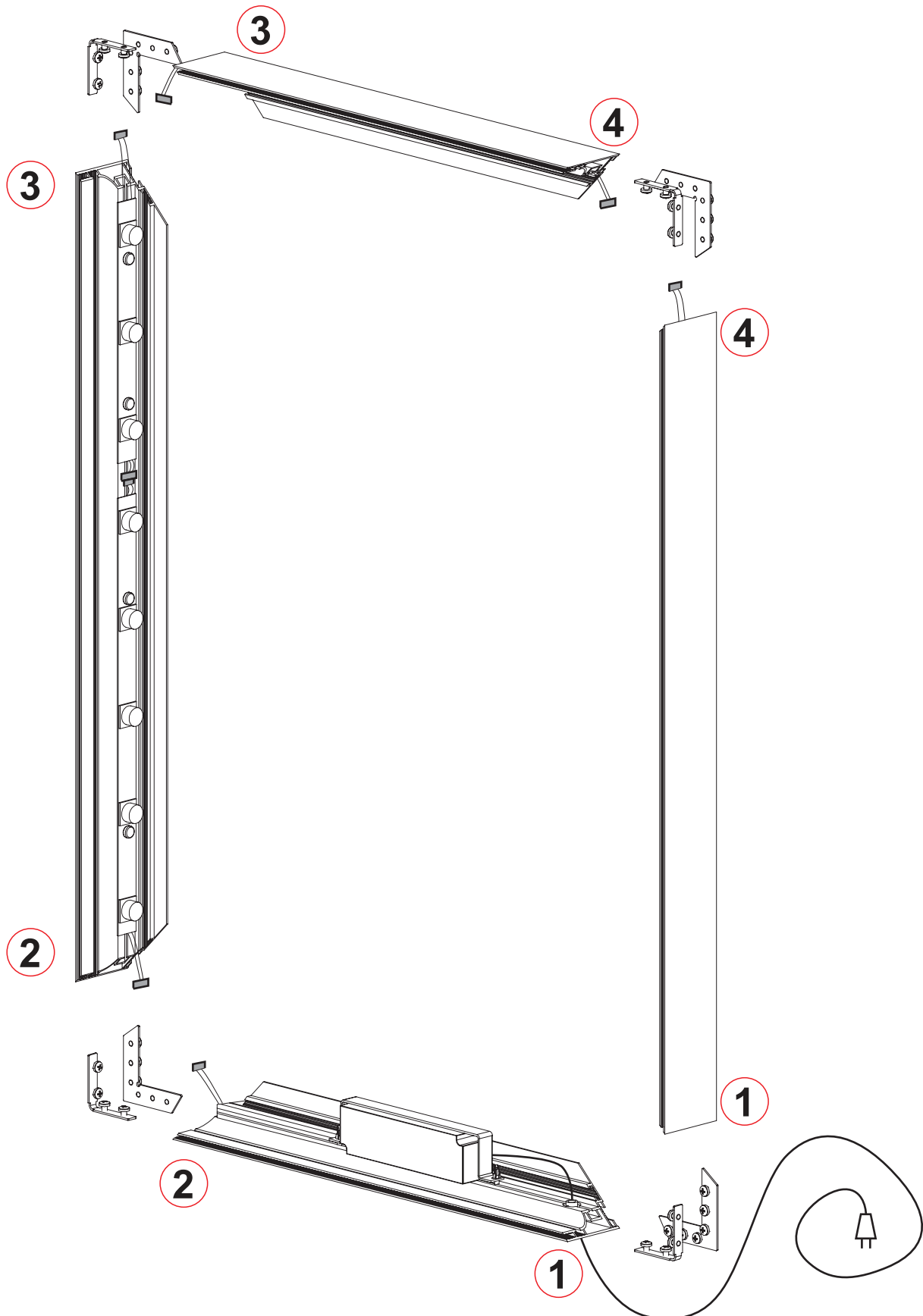


ASSEMBLY INSTRUCTIONS

Backlit Fabric Light Box Wall Display

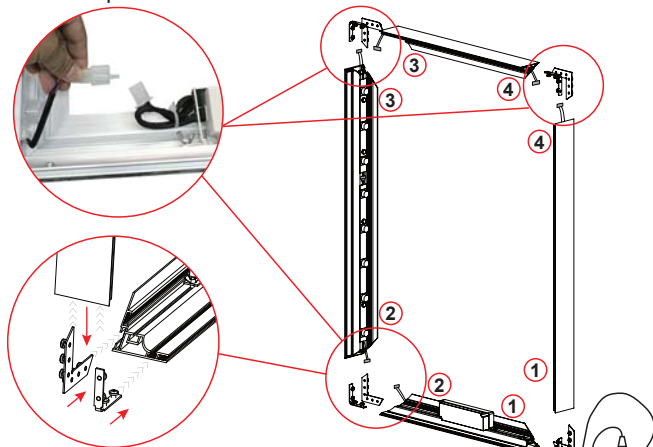


ASSEMBLY INSTRUCTIONS

Backlit Fabric Light Box Wall Display

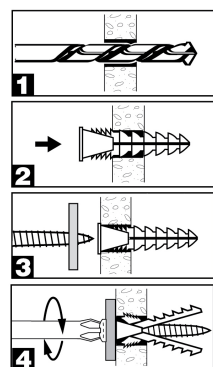


STEP 1. Assemble the SEG frame by connecting LED light panels with the "L" shaped brackets. Make sure there's no gap at the corner then tighten screws on the brackets to fix the frame. Connect the power cords at the corners as shown:

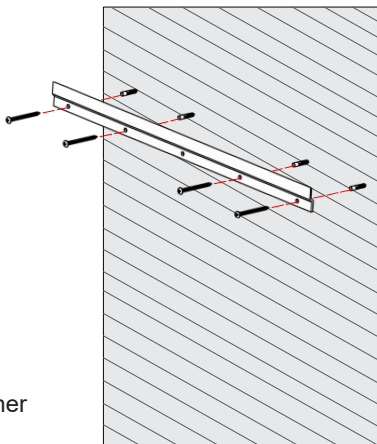


TIPS: Match the numbers labeled at the ends of each panel.

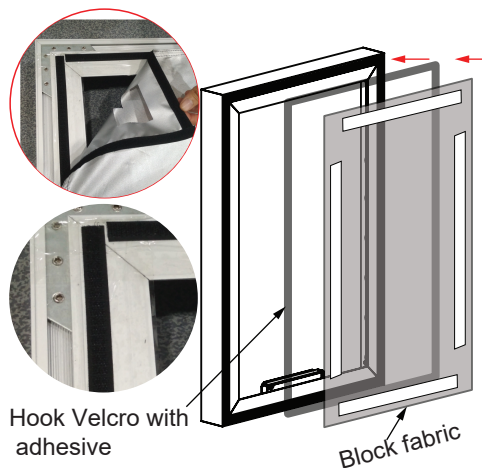
STEP 3. Mount one of the provided Z-bar at the top. Use 4 wall anchors and 4 screws. Find the desired location to hang the SEG frame. Use a bubble level to help when attaching the Z-bar to the wall. Install anchors and screws as instructed below:



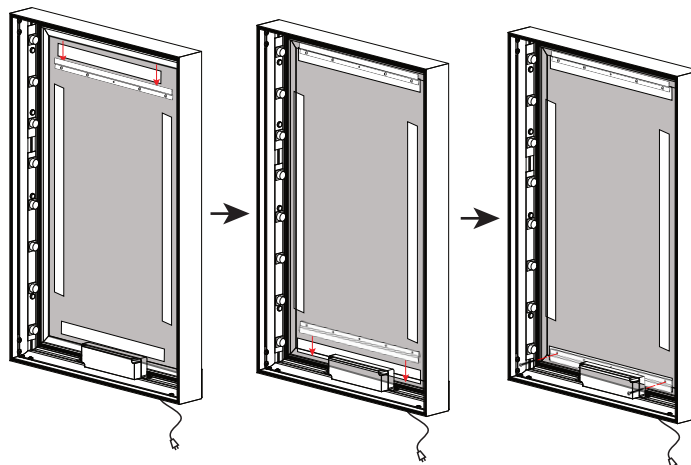
NOTE: DO NOT install the other Z-bar at this point.



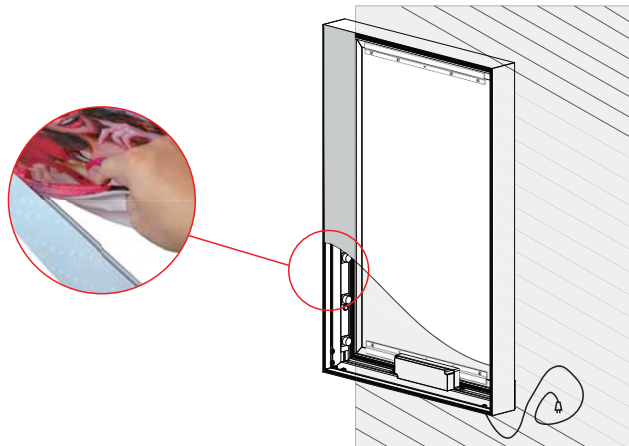
STEP 2. Attach the hook velcro with adhesive around the back side of the frame, then attach the block fabric with loop velcro as shown:



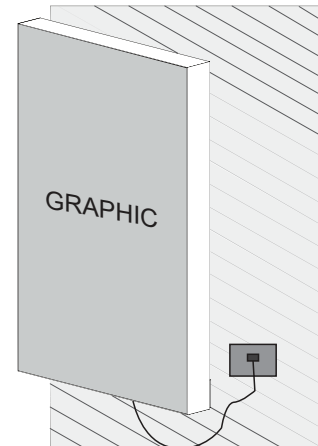
STEP 4. Hang the SEG light box on the installed upper Z-bar. Slide down the other Z-bar to hold the bottom frame at back. Mark 2 drill centers through the holes on the Z-bar. Remove the Z-bar and drill 2 holes then fix it with plastic anchors and screws.



STEP 5. Assemble the SEG graphic to the mounted frame by inserting the silicon edges into the grooves on the sides of the frame.



STEP 6. Plug in the power cord to turn on the LED light. The assembly is finished.



Post Up Stand

www.postupstand.com Address: 5461 Dunham Road, Maple Hts., OH 44137