

# Assembly Instructions

FLTCTBASE – Floor to Counter Lectern Base

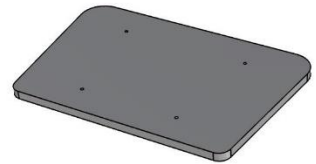
V 19.09

Before you start, place acrylic parts on a flat and smooth surface. Carefully peel off protective films attached on acrylic panels.

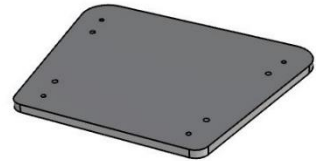
- 1 Take all 4 acrylic rods out of their polybags and attach all 4 rods to the base using 4 bolts provided. Do the same with the smaller top panel.



Base Panel



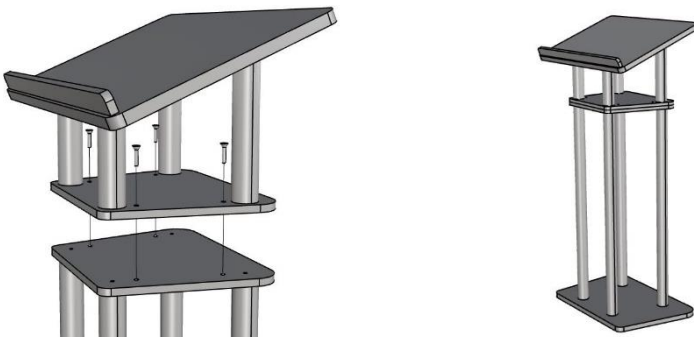
Top Panel



Acrylic Rod



- 2 If you also purchased FLTCTTOP, assemble the entire lectern by placing the top onto the base and securing using 4 bolts provided.



If you have any questions regarding our products, please visit us at [www.displays2go.com](http://www.displays2go.com) or contact D2G customer service at 844-221-3388.