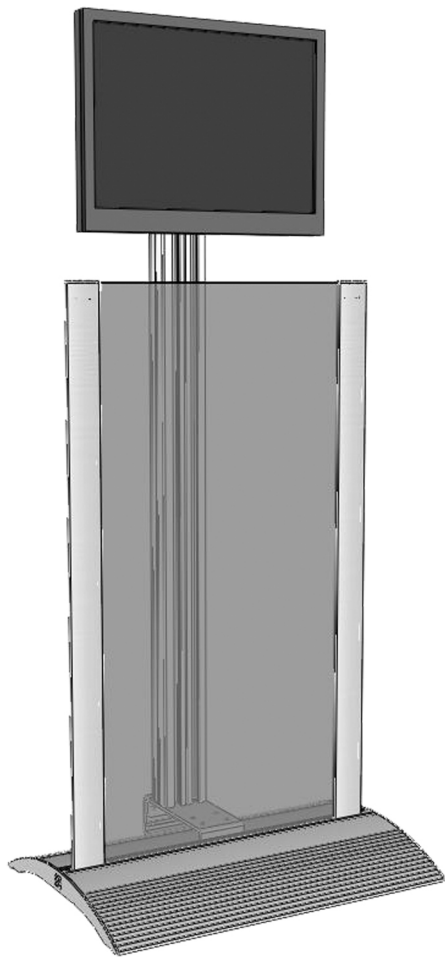


AV Display: ASSEMBLY INSTRUCTIONS

FIG. 1 PARTS ASSEMBLED



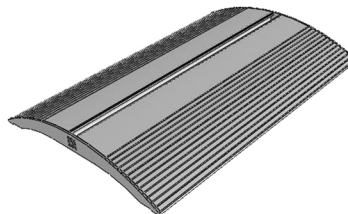
***Note:** Hardware was included for mounting Monitors. If the included hardware is incompatible with your monitor please seek professional advice in order to properly secure your media.

You will need to have the following tools in order to continue with the assembly process. All other hardware is included.

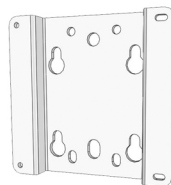
- Phillips Head Screw Driver
- Flat Head Screw Driver

PARTS LIST:

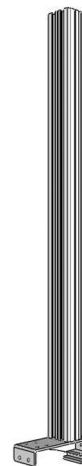
A) BASE24



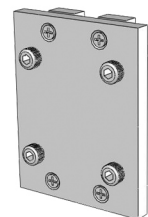
D) VESA100



B) AVEXTRU48



C) MOUNTING BRACKET



E) 5mm ALLENKEY



F) 6mm ALLENKEY



G) M4 HARDWARE KIT

M4 x25mm (x 4)



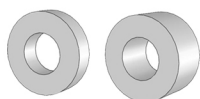
M4 x15mm (x 4)



M4 x12mm (x 4)



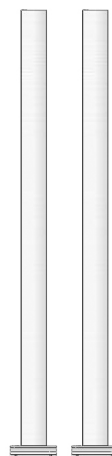
1/8" & 1/4" SPACERS (x 4)



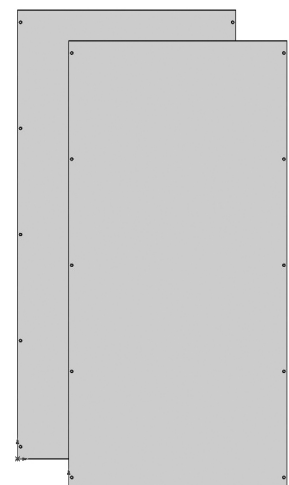
1/16" WASHERS (x 4)



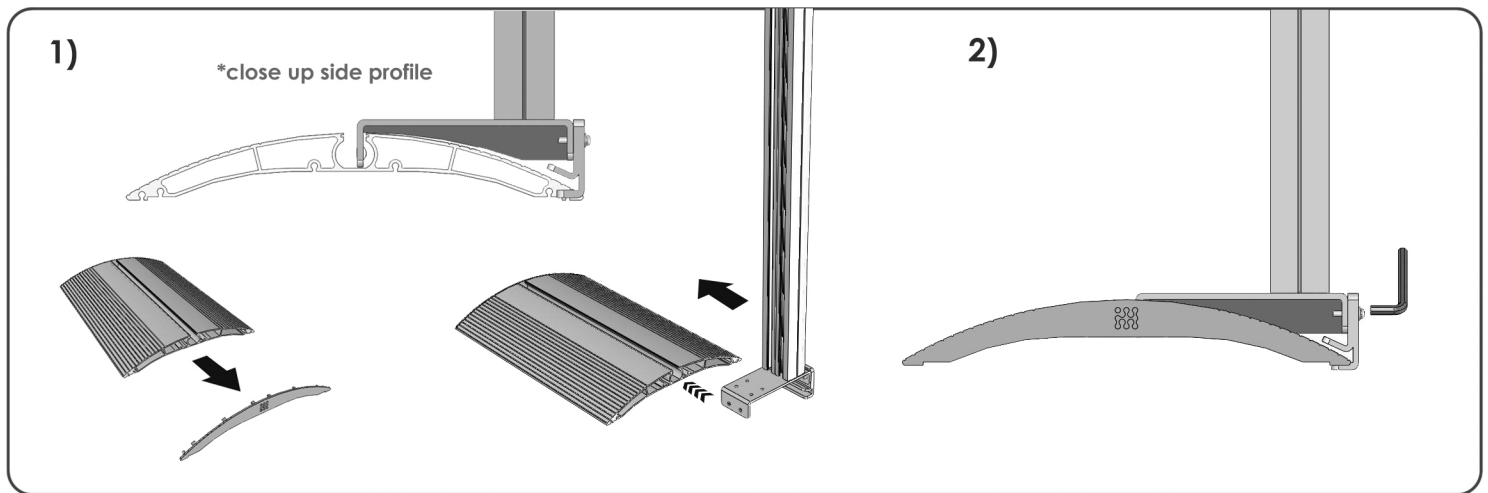
H) STEXTRU



I) LENS

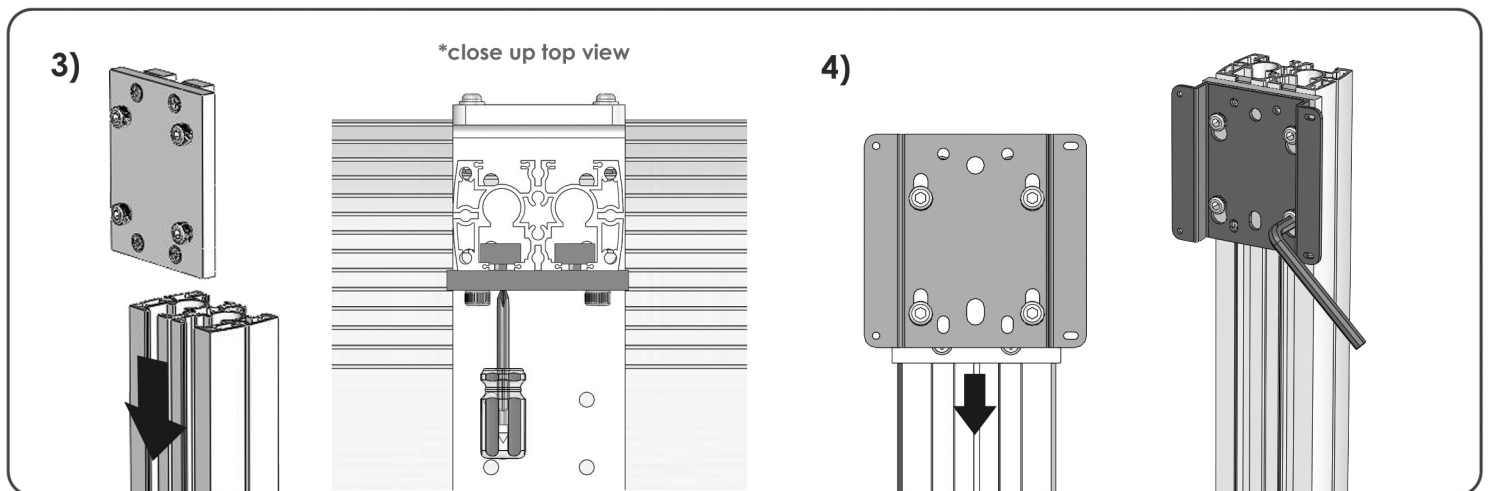


STEP 1: ATTACH (B) AVEXTRU48 TO PART (A) BASE24



- 1) Remove end cap from **(A) BASE24** and slide the clamp on **(B) AVEXTRU48** into the middle channel on the base. If necessary loosen the bolts on the base clamp using the **(E) 5mm ALLENKEY**. Slide the **(B) AVEXTRU48** so it's sitting in the center of the base.
- 2) Securely tighten the base clamp on part **(B) AVEXTRU48** using the **(E) 5mm ALLENKEY**. Replace the end cap previously removed in step 1.

STEP 2: ATTACH PART (C) MOUNTING BRACKET TO (B) AVEXTRU48

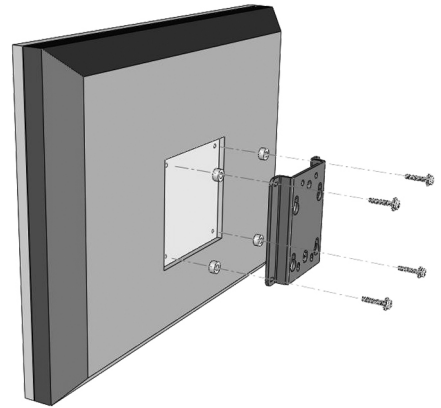


- 3) Determine your desired location to mount your monitor, then slide the bars on the **(C) MOUNTING BRACKET** into the channels on the **(B) AVEXTRU48**. Fasten the Mounting Bracket using a philips head screw driver.
- 4) Once attached place the **(D) VESA100** plate onto the **(C) MOUNTING BRACKET** by aligning the keyholes on the plate to the exposed screw heads on the bracket. Loosen the screw heads on the bracket if necessary to fit the VESA100 plate then tighten the plate down using the **(F) 6mm ALLENKEY**.

STEP 3: MOUNT TV/MONITOR TO THE ASSEMBLED UNIT USING THE HARDWARE PROVIDED

5)

*NOTE: If Spacers are necessary, determine the correct spacer needed to fill the void between the Display and the VESA Plate. Be sure to place the spacer against the display and then place the plate over the spacers see the diagram to the right.



5) Lay display face down on a clean dry surface.

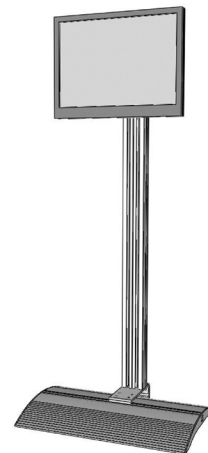
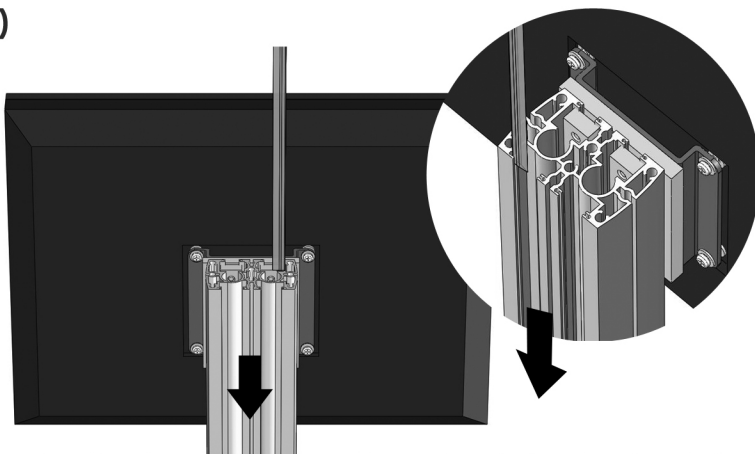
Remove existing hardware, if any, from the holes used to mount the bracket on the back of your TV/Monitor. Dry fit the screws provided (with the plate if necessary) to determine the length of the screw needed for mounting. The screw head should be at least 1/8" off the hole to allow space for the plate. Pre-existing screws can be used to mount the tv/monitor to the plate only if the display has a flat backed surface and sits flush to the plate.

***note: If the mounting holes in the tv/monitor are in a recessed area, spacers (provided) must be used to bring the plate to the proper installation depth. If the display mounting area is flush, the spacers are not required and the plate is mounted directly to the tv/monitor.**

With someone's assistance hold up the TV/Monitor to align the mounting holes on the display to the **(D) VESA100** plate. Place four screws (determined in last step) with the 1/6" washers (provided) into the mounting holes in the **(D) VESA100** plate and into the TV. Tighten all screws using a philips head screw driver.

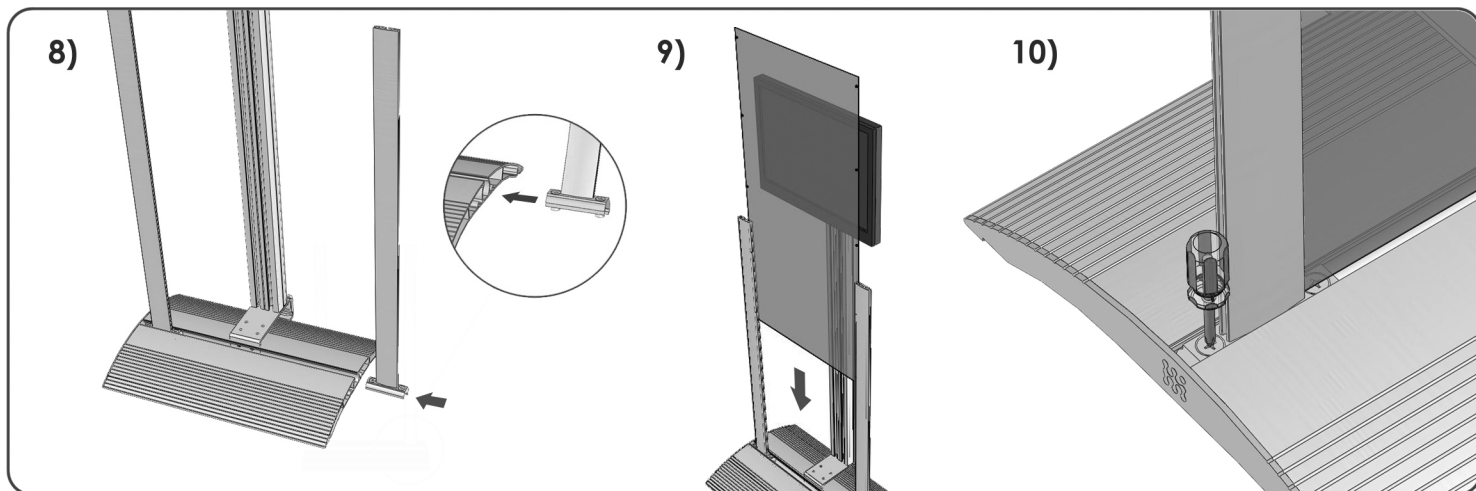
STEP 4: INSERT PLASTIC EXTRUSION INTO PART (B) AVEXTRU48 AND HIDE ALL CORDS

6)



6) Slide the plastic extrusion provided with part **(B) AVEXTRU48** into the channels in either the front or the back of part (B) to hide the exposed cords and plugs from the displays. Repeat with all four plastic extrusions.

STEP 5: ATTACH (H) STEXTRU INTO (B) BASE



8) Attach the **(H) STEXTRU** to the **(B) BASE** by matching the base clamp on the STEXTRU to the mid groove on the BASE. Insert both STEXTRU but do not tighten down,

9) Remove the end caps located on the STEXTRU and dry fit the **(I) LENSES** into the inserted **(H) STEXTRU**. Once the Lenses are set slide the combination of the STEXTRU and the LENSES so they're centered on the base.

10) Replace the previously removed end caps and tighten the base clamps down using a phillips head screw driver.

11) Remove and reinsert Lenses with your graphic sandwiched between them.

You're now finished assembling your AV Display.

12) Double check all your fasteners and tighten all loose connections. Replace all the end caps and enjoy.

