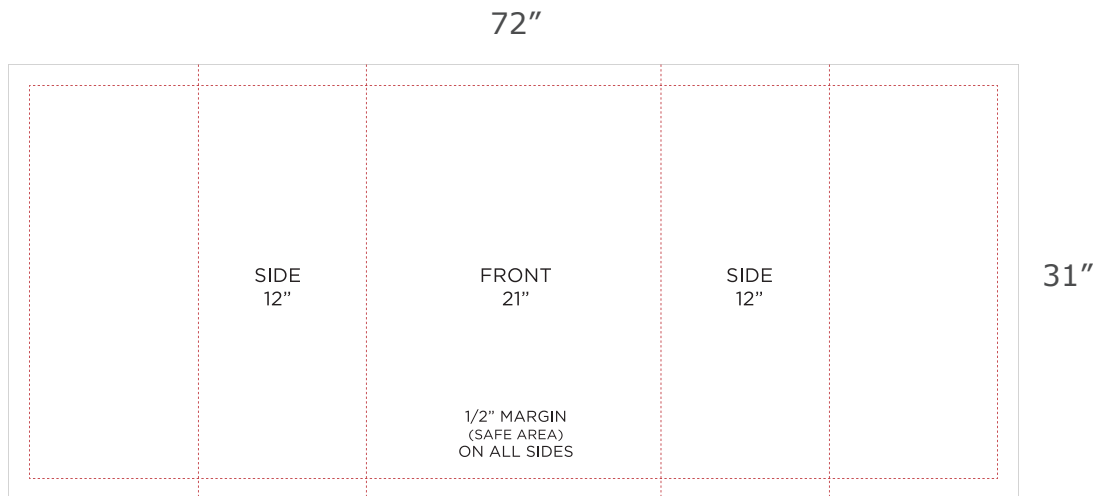


# SPECIFICATIONS FOR SUPPLYING PRINT READY ARTWORK



## **BEACON PODIUM WRAP LARGE - 72" x 31"**

Total Graphic Area: 72" x 31"  
Total Safe Area: 69" x 28"

Please include a 1.5" safe area around all four edges where no text, logos, etc. are placed.  
(For Reference Only)

*Front of podium will be 21" wide.*

## **FILE FORMATS**

### **.JPG or .PDF**

(.ai, .psd, .eps,.tiff)

## **ART GUIDELINES**

- Files must be CMYK
- All Fonts must be created to Outlines or Supplied with your artwork
- Embed all images and support files
- Resolution must be 150 ppi at full size
- Please view your artwork at full size
- Background color / Image must extend to the edge of the artboard
- Make sure to turn off or delete all other layers on finished artwork before sending and make sure artwork is a flatten file (if using Photoshop).

## **TRANSMITTING FILES**

ONLINE: [www.postupstand.com/uploadartwork](http://www.postupstand.com/uploadartwork)  
EMAIL: [sales@postupstand.com](mailto:sales@postupstand.com)