

ASSEMBLY INSTRUCTIONS

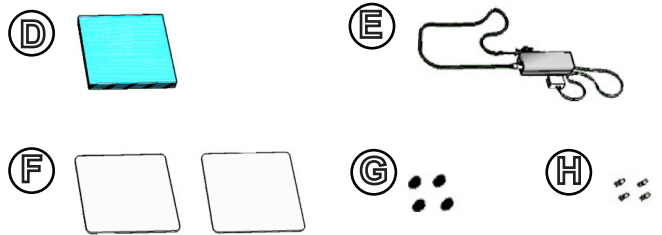
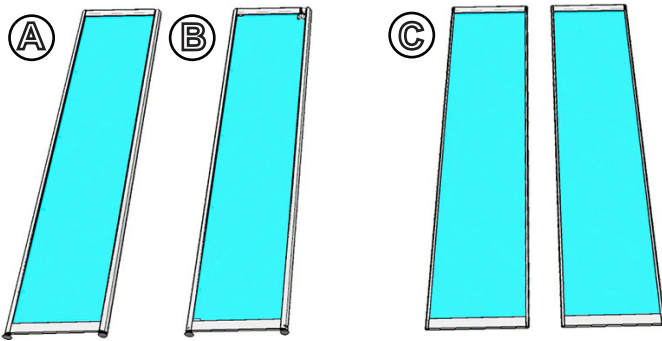
DCKDMT - Floor Standing Metal Display Case - Single Door

IMPORTANT SAFETY INFORMATION:

Read all instructions before start installing the unit. Displays2go is not responsible for any damage or injury caused by incorrect installation, assembly or use. 2 people are required for assembling.

PARTS LIST

A. Back Panel	X1
B. Front Panel with Lock	X1
C. Side Panel	X2
D. Glass Shelf	X4
E. Power Adapter & Cords	X2
F. Top and Bottom Panel	X1
G. Plastic Cover	X4
H. Peg	X4



TOOLS NEEDED

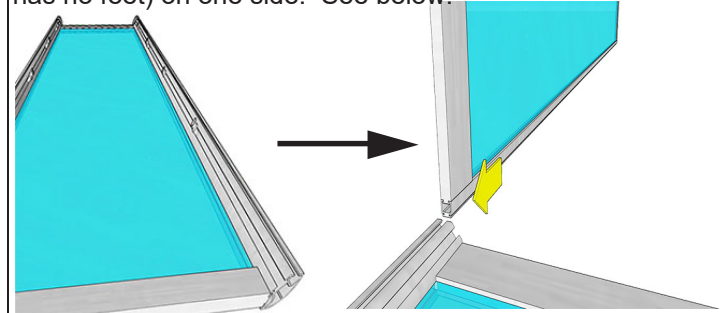
-Flat/Phillips Screwdriver



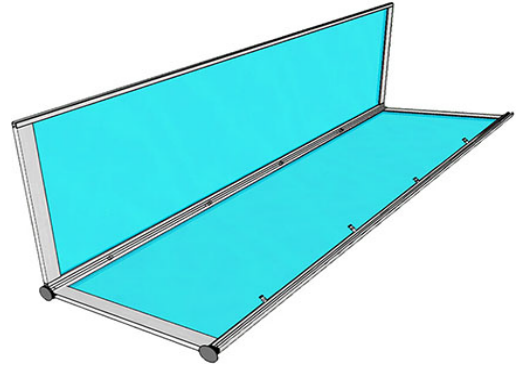
Scan QR code to visit the product page:



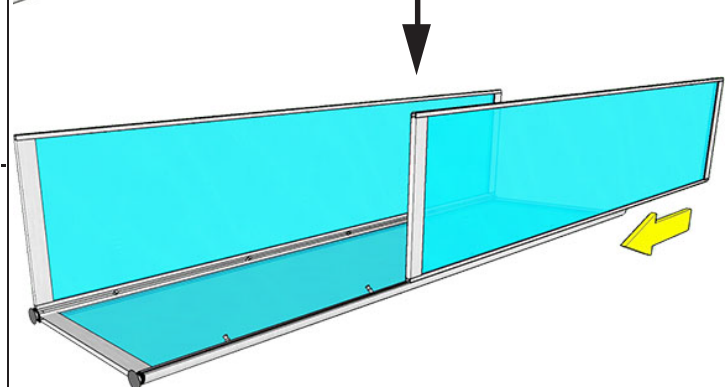
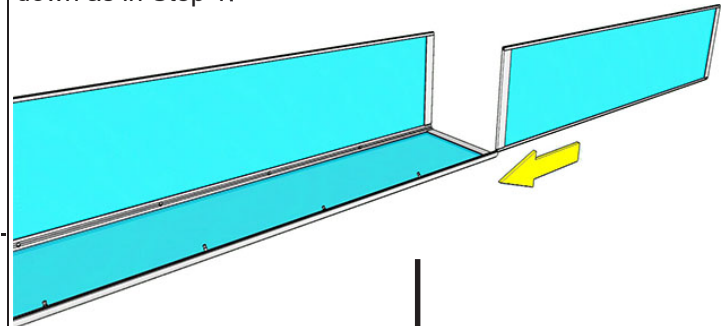
1. Place the back panel (A) on a soft work area. Slide 1 side panel (C) into the groove from the top of the back panel (top has no feet) on one side. See below:



Slowly slide it all the way to the bottom until it stops.



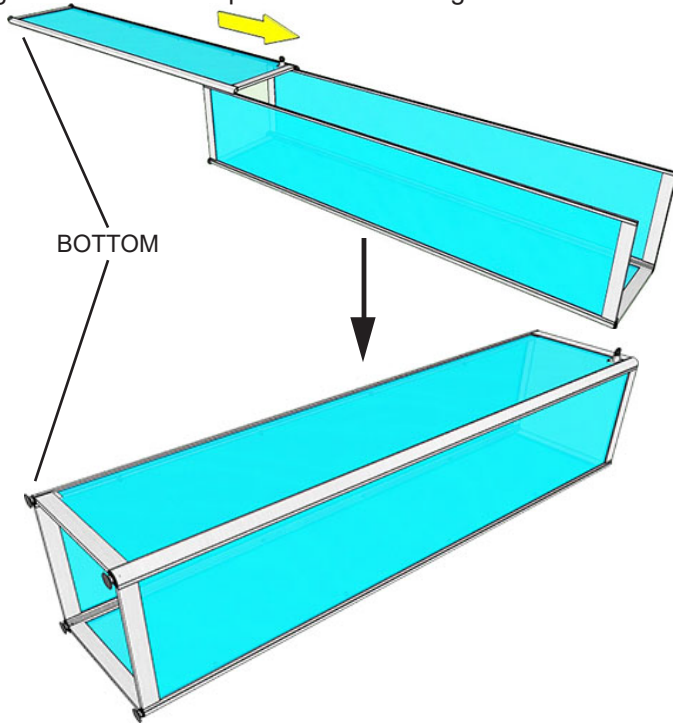
2. Slide the 2nd side glass panel (C) into the groove on the other side of the back panel. Slowly slide it all the way down as in Step 1.



ASSEMBLY INSTRUCTIONS

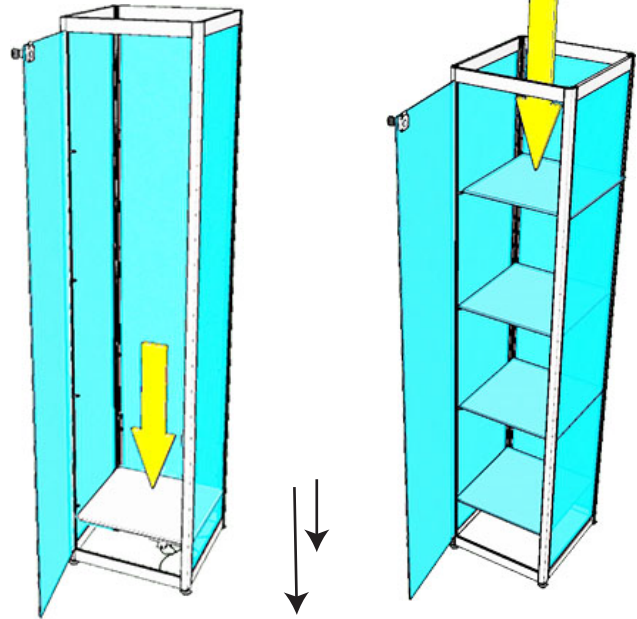
DCKDMT - Floor Standing Metal Display Case - Single Door

3. Hold the front panel (B) and slide both side panels into grooves in the front panel. See the images below:

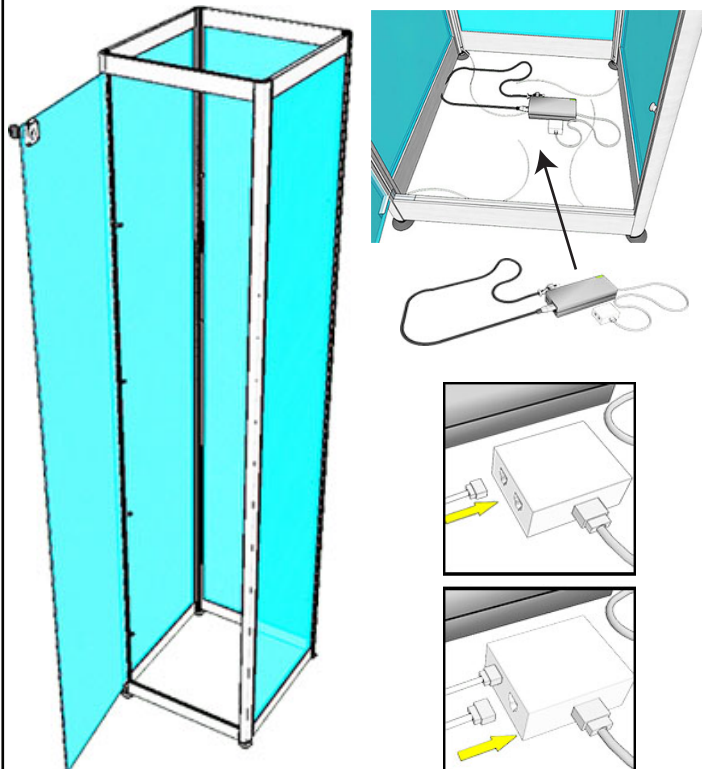


5. Place one wood board (F) at the bottom inside the display case. Adjust pegs inside the display case so that all 4 pegs holding the same glass shelf are on the same level. Carefully place 4 glass shelves (D) on the pegs.

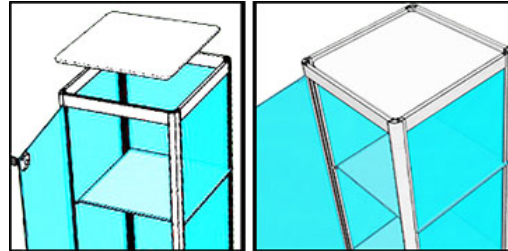
Adjust pegs inside the display case so that all 4 pegs holding the same glass shelf are on the same level. Carefully place 4 glass shelves (D) on the pegs.



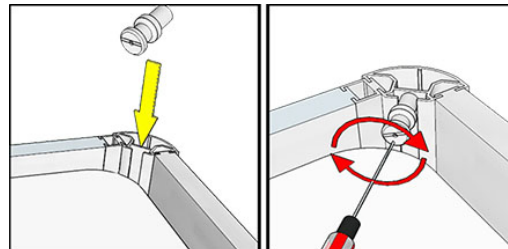
4. Carefully lift the assembled display case to its upright position. Unlock the top and open the front door, place the power adapter (E) inside on the floor. Connect all the cables from the metal frame to the center hub as shown below.



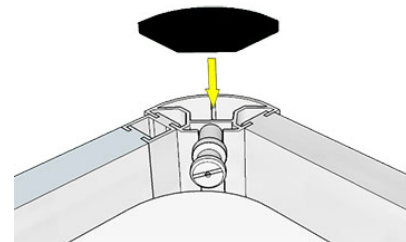
6. Place the 2nd wood board (F) on top of the display case.



Slide 1 peg (H) into the slot in a corner post, then tighten them with a screw driver. Do this at all 4 corners.



Insert 1 plastic cap (G) into 1 corner post. Finish the assembly by doing this for all 4 corners.



If you have any questions regarding our products, please visit us at www.displays2go.com or contact D2G customer service at 844-221-3388.