

■ accessories



Pipe with crescent at end



Pipe with push button



Join the pipes by Thumb screw



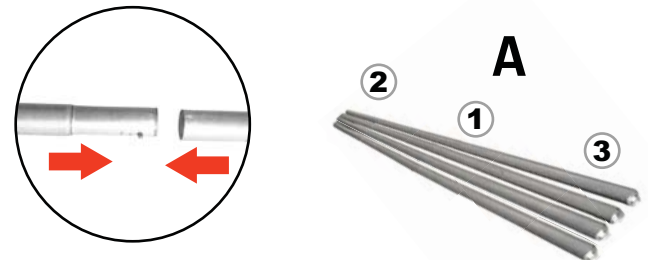
■ How to install?

- ① Horizontal pipe (with push button) (x4)
- ② Horizontal pipe (with push button at top, crescent at end) (x 4)
- ③ Horizontal pipe (with crescent at end) (x4)
- ④ Vertical pipe (x2)
- ⑤ Short Vertical pipe (x2)
- ⑥ Long Vertical pipe (with push button)(x2)
- ⑦ Thumb screws (x10)
- ⑧ Short Screws (x4)
- ⑨ Bases (x4)
- ⑩ Fabric Panel (1 set)

**Step 1:** Take all parts out of bag.

**Step 2:** Join up the Horizontal pipes.

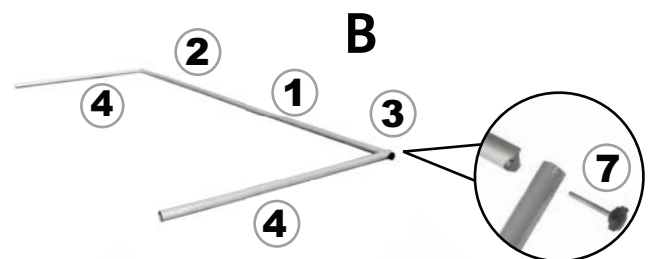
Place the tapered end of Horizontal pipe ② into the large end of Horizontal pipe ① until the release button snaps into place. Continue, place Horizontal pipe ① into Horizontal pipe ③. Then, you will find there is a long bar. Repeat this process for another 3sets of long bars.



Here, we call each set of these long bars - " Group A" .

**Step 3:** Assemble the Vertical pipes.

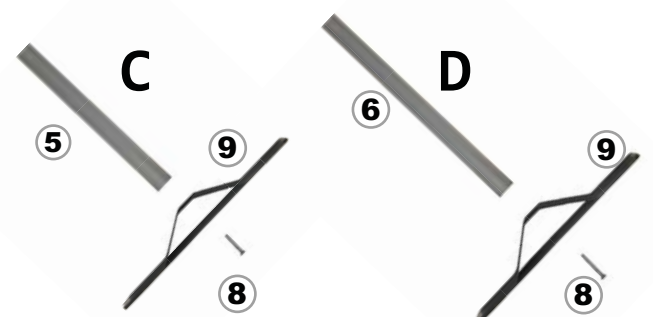
Pick up one set of "Ground A", align the Vertical pipe ④ with the hole in the two end of 'Ground A' , and, fasten them in place using the Thumb Screw ⑦.



Here, we call it - " Group B" .

**Step 4:** Assemble the bases.

Put the Short Vertical pipe ⑤/ Long Vertical pipe ⑥ into the top hole of Base ⑨, then fix the Short Screws ⑧ at the bottom of Base ⑨ by Phillips screwdriver.



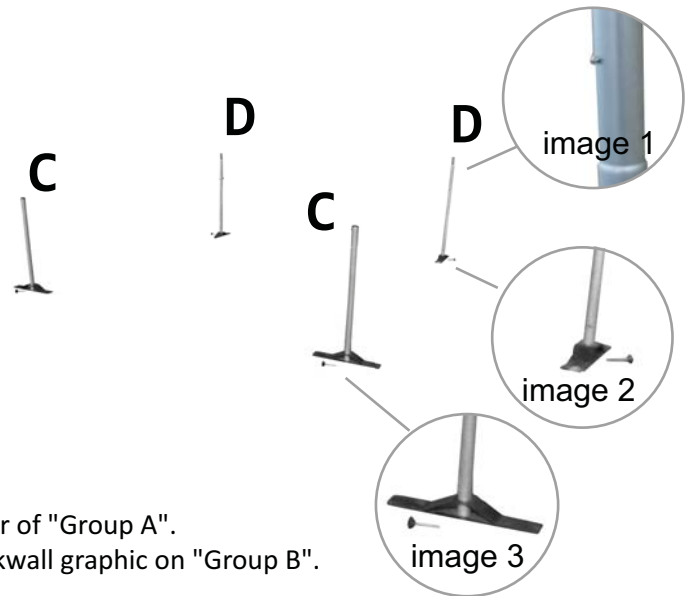
Repeat this process for another bases, and here we call them " Group C" & "Group D" .

**Step 5:**

Place the assembled bases- "Group C" & "Group D" on the floor, and make sure "Group C" standing in the front of your booth.

Please NOTE:

- a. The push button on "Group D" must facing the "Group C". (see image 1)
- b. The feet of "Group C" & "Group D" should be placed as image shows. (see image 2 & 3)



**Step 6:**

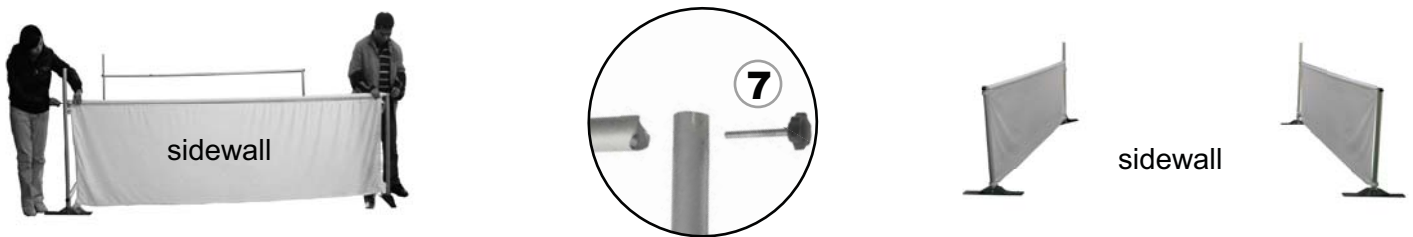
Pick up the sidewall graphic panel, and go through the long bar of "Group A".  
Loose the Thumb screw (7) of "Group B", then attach the backwall graphic on "Group B".

(Note: As the pipes with crescent at end,so please take care of the fabric when the bars go through the pocket of fabric. )



**Step 7:**

Put the sidewall between "Group C" & "Group D" , and fasten the two end by Thumb Screw (7).



**Step 8:**

Put the backwall between the two "Group D", ensure the release button snaps into place.

**Step 9:**

Finally, put a long bar - "Group A"( 2 1 3 ) at the bottom of backwall frame, and fix it by Thumb Screw (7) .

