

# DSIGN1117

## Printing and Mounting Instructions

1. Print templates for the film are available online at 2 locations :

a. [www.displays2go.com](http://www.displays2go.com) - On the Home Page, type DSIGN1117 into the "enter sku" box to access.

b. [www.signstandoffs.com](http://www.signstandoffs.com) - On the Home Page, type DSIGN1117 into the "search" or "sku" box to access.

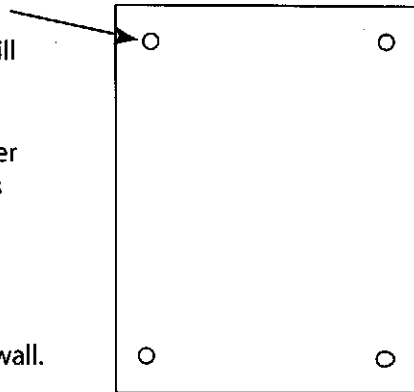
The templates are available for download in Word, Illustrator, and Photoshop formats.

(Note: The pre-diecut films are for use in color or B&W photocopiers and laser printers only.)

2. Each template features two separate signs per sheet. After adding your custom designs, we strongly recommend you print a test of your design on plain paper first. By placing the die-cut film over this test print you will be able to see if everything looks correct. This allows for fine tuning the design before printing onto the supplied film.

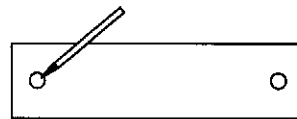
3. Just before printing onto the film, remove any diecut circles still attached to the sheet to prevent them from getting stuck inside your printer.

Print your finalized design onto the film using a color or B&W laser printer or photocopier. Select the correct media type and always print at 100%.

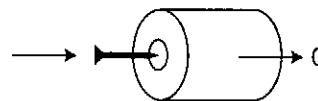


Now you are ready to mount the directory sign assembly to the wall.

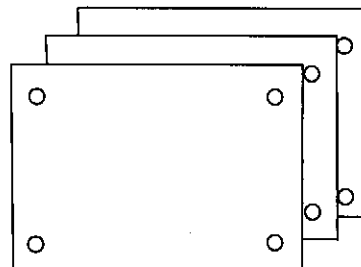
4. Hold one of the acrylic sign panels at the desired location on the wall and make sure it's level. Pencil in the hole locations onto the wall. Drill pilot holes for the screws and if your wall is hollow insert the wall anchors.



5. Using the included mounting screws, mount the standoff barrels to the wall.



6. Sandwich your printed design between the two acrylic sheets.



7. Place the sign assembly onto the standoffs and hand-tighten the caps into the barrels.

