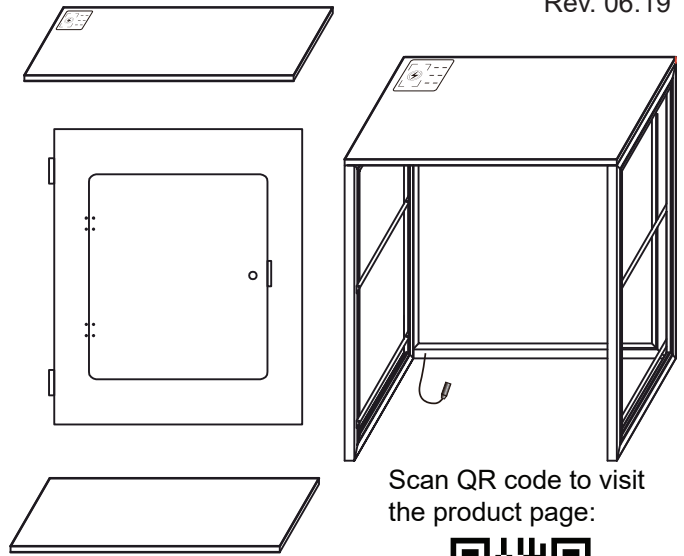


Frameless Desk Instructions

DISPLAYS2GO

Rev. 06.19

PARTS		QTY.
A Foldable Panel		1
B Door Panel		1
C Counter Top		1
D Shelf		2
E Stud		4
F L Connector		2
G Thumb Screw		8



SKU: 2SEGLCF

Scan QR code to visit the product page:



Before start assembling, check the contents in the box and make sure you have all parts listed above.

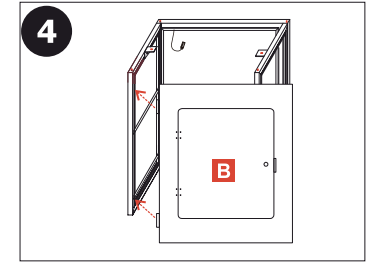
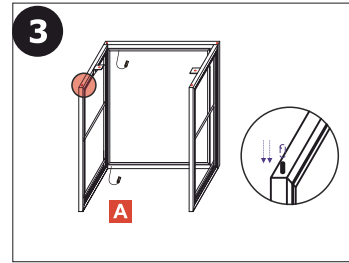
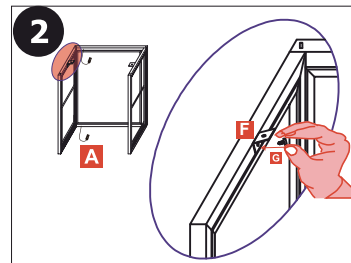
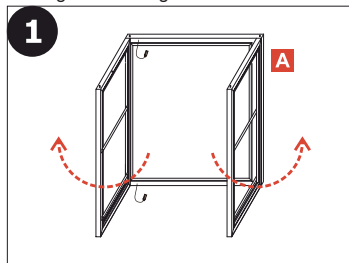
ASSEMBLY INSTRUCTIONS

Place the folded panel on the floor with feet at bottom and unfold the panel so the sides are at 90° to the front. Be careful not to pinch your fingers when moving or unfolding.

Align the hole in the side panel with the hole in shorter side of Part F, and fix the bracket on the side panel by using Thumb Screw.

Insert the studs into the pre-drilled holes on the top of the frame.

Place the door to the back of the main frame and align the holes on the brackets with insert nuts in the frame.

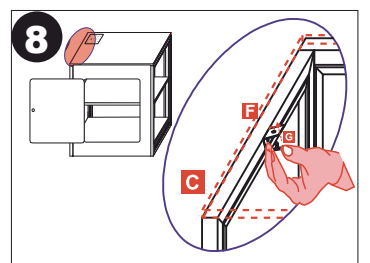
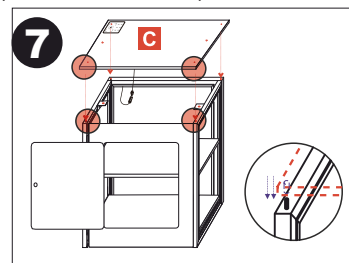
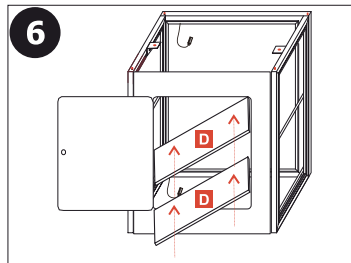
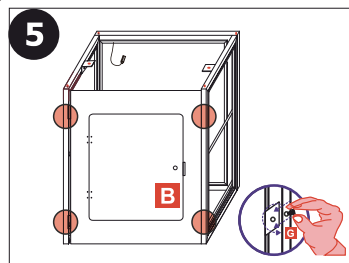


Insert (4) Thumb Screws to fix the door onto the main frame.
Tips: Open the door to easily hold the door at place then insert the Thumb screws.

Carefully put the shelves inside through the door with its brackets hanging on side rails. Note: the finished edge of the shelf should face to the front.

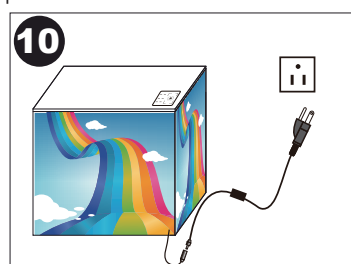
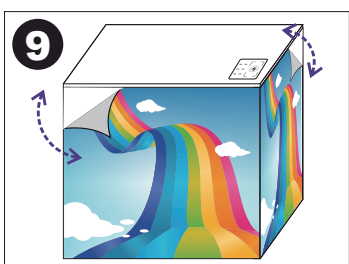
Place the countertop onto the frame, line up the predrilled holes with the studs on the frame. Connect the DC wires on the foldable panel and the countertop.

Fix the countertop by tightening the thumb screws on both sides as shown below.



Assemble the SEG fabrics onto the main frame by inserting silicone edge into the slot on the front and sides.

Connect the DC cord coming out from the counter with the adapter, and plug into the power outlet.



Specifications:

a. Input: 100 ~ 240V AC, 50/60Hz

b. Charging port: 6 USB Ports & 1 wireless Charging Module

c. Charging Output: USB - 5V DC, Max.: 2.1A

Wireless Charging Output - 5V DC, Max.: 1A

Note: Only the devices with embedded wireless charging module can be charged wirelessly.

Working Environment:

a. Working Temperature: -14 ~ 104 F°; Indoor use ONLY.

b. Storage Temperature: -13 ~ 140 F°