

ASSEMBLY INSTRUCTIONS
SMSAL39 - Countertop Acrylic Hygiene Shield



Scan QR code to visit
the product page:



Open the box and place each part side by side on the cardboard.

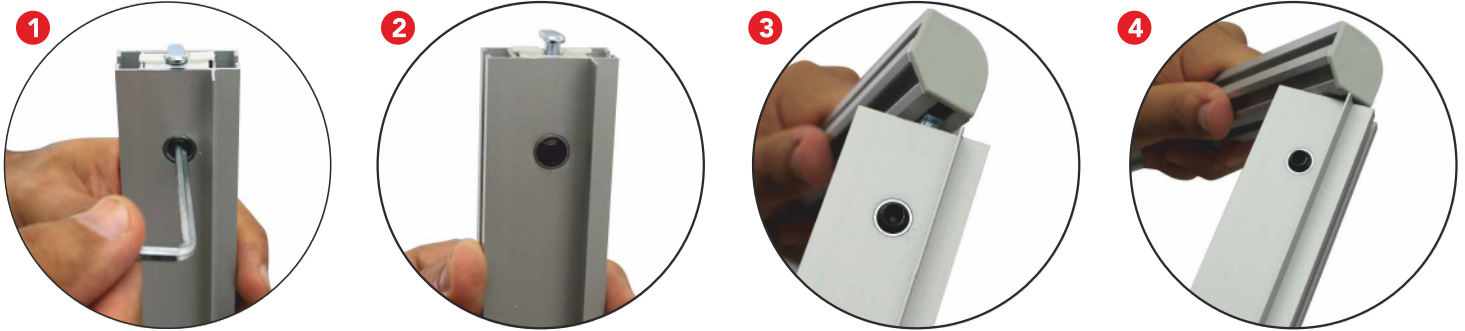


If you have any questions regarding our products, please visit us at www.displays2go.com
or contact D2G customer service 844-221-3388.

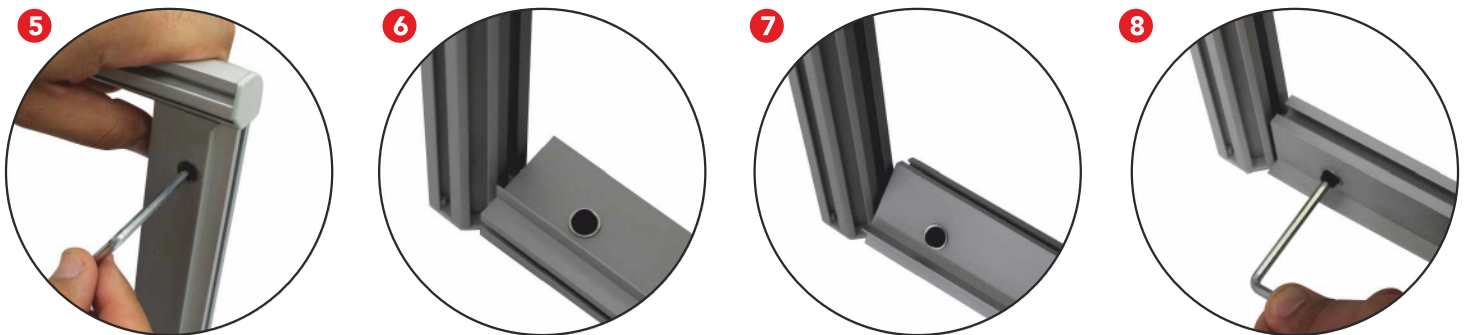
ASSEMBLY INSTRUCTIONS

SMSAL39 - Countertop Acrylic Hygiene Shield

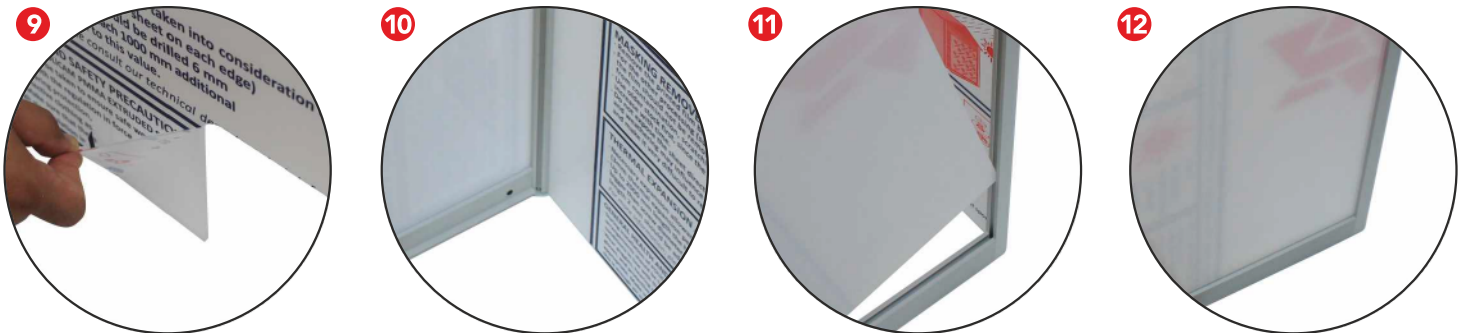
Take the top bar and use the included allen wrench to expose the "T" anchor on 1 end. Align the top bar with 1 side bar at 90° as shown in Fig 3. Insert it into the T slot on 1 side bar.



Adjust 2 joining parts to the position as shown in Fig 8 and then tighten the insert screw to lock 2 parts securely. Assemble the other side bar the same way. Repeat the step to fix the 2 foot bars at the bottom of the assembled frame.



Peel off the protective film on the acrylic panels. Slide the front acrylic panel from the bottom and insert each side into the adjacent T slot on the frame. Adjust the side bars to fit the panel in completely.



Insert 2 side panels into the T slots the same way and the assembly is finished.

