

ASSEMBLY INSTRUCTIONS

SMSAL47ADD - Sneeze Guard Expansion



Scan QR code to visit
the product page:



NOTE: SMSAL47ADD must be used with SMSAL47.

Open the box and place each part side by side on the cardboard.

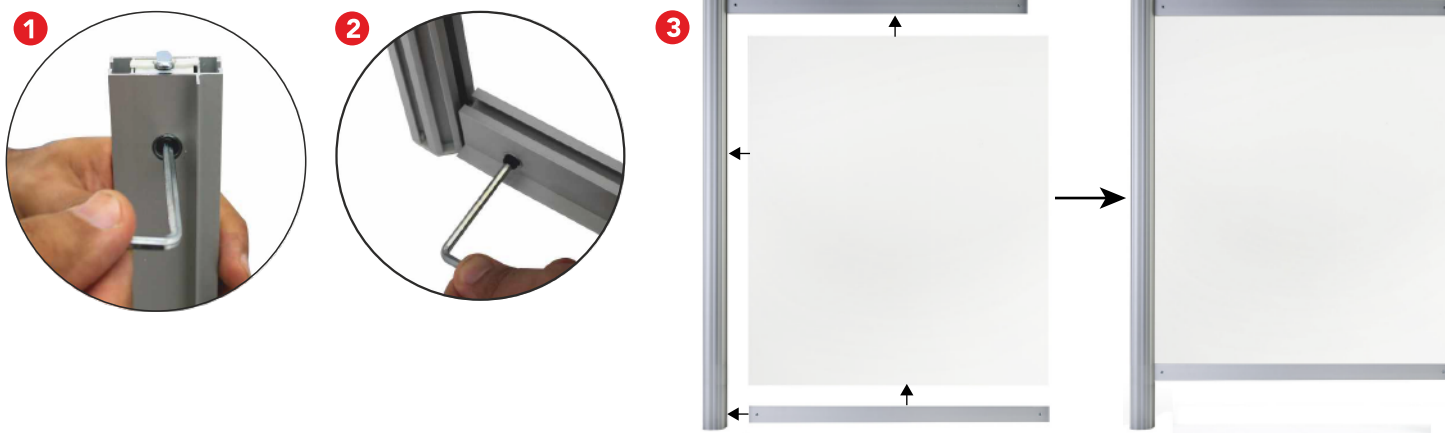


If you have any questions regarding our products, please visit us at www.displays2go.com
or contact D2G customer service 844-221-3388.

ASSEMBLY INSTRUCTIONS

SMSAL47ADD - Sneeze Guard Expansion

Take the top bar and use the included allen wrench to expose the "T" anchor on 1 end. Align the top bar with the side pole at 90° as shown in Fig 2. Insert it into the T slot and tighten the insert screw to lock 2 parts securely. Insert the acrylic panel into the assembled frame and attach the bottom bar to hold the acrylic panel. Tighten the screw to fix the frame.



Place the shield panel upside down. Attach 1 foot plate onto the bottom and align the holes on the panel with holes on the aluminum frame. Fix the foot with provided screws.



Carefully flip the assembled add-on panel to its standing position. Insert the T-anchors on the open side into T-slot on the joining sneeze shield. Use the provided Allen Wrench to tighten the top frame and bottom frame. Peel off the protective film on the acrylic panels.



Repeat the steps above to expand your sneeze shield to a wide configuration as needed.

NOTE: The add-on sneeze shield must be paired with SMSAL47.