

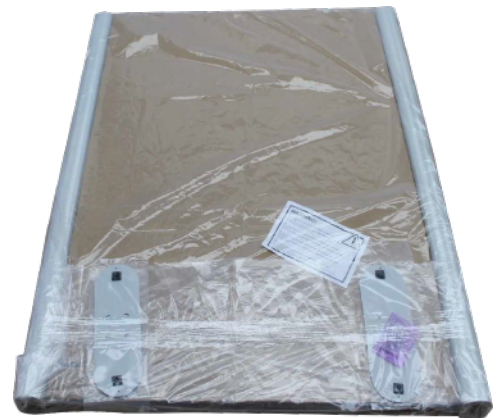
ASSEMBLY INSTRUCTIONS
SMSAL47 - Reception Sneeze Guard



Scan QR code to visit
the product page:



Remove all the parts from the packaging and place them on a soft surface.

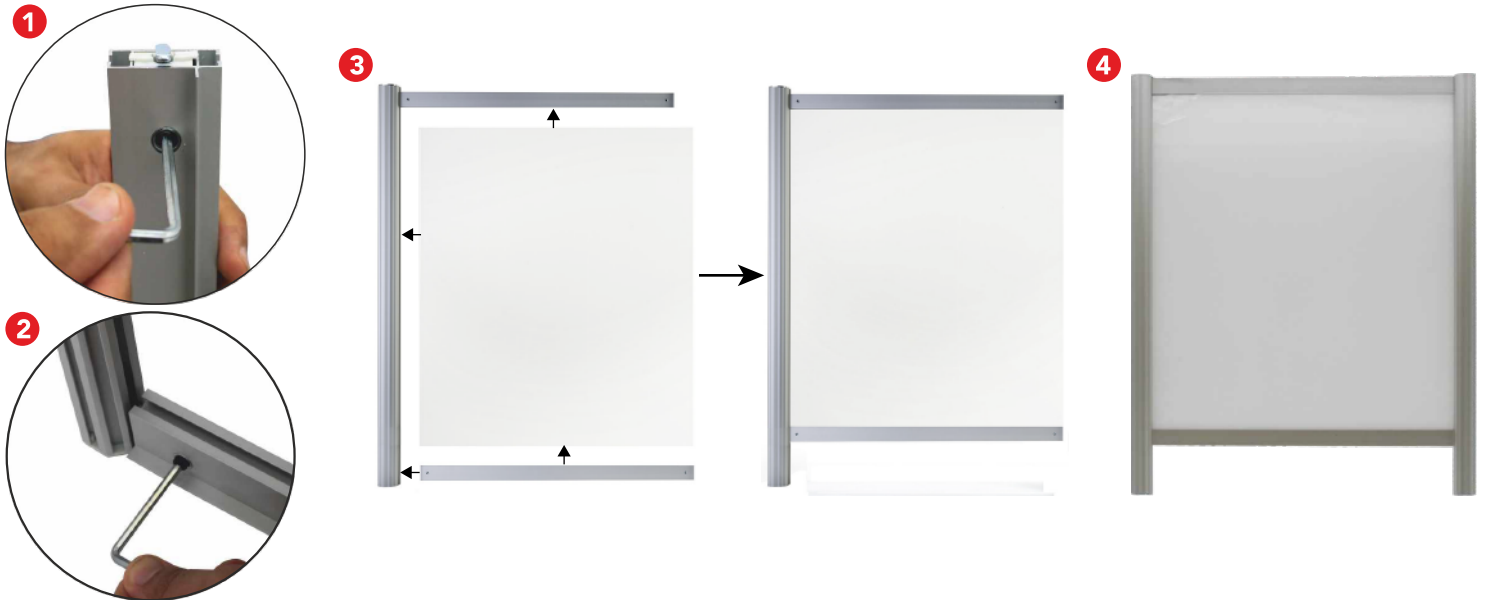


If you have any questions regarding our products, please visit us at www.displays2go.com
or contact D2G customer service 844-221-3388.

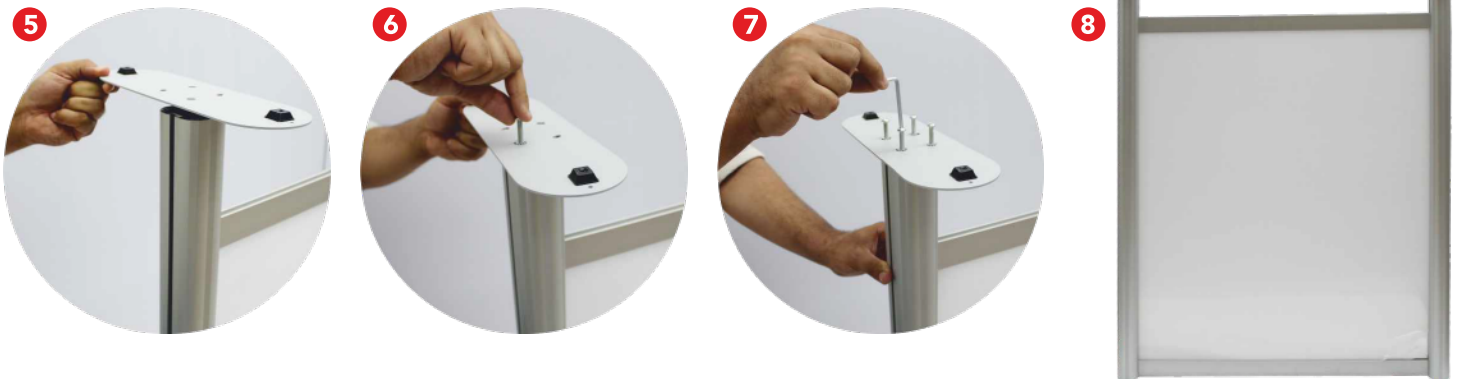
ASSEMBLY INSTRUCTIONS

SMSAL47 - Reception Sneeze Guard

Take the top bar and use the included allen wrench to expose the "T" anchor on 1 end. Align the top bar with the side pole at 90° as shown in Fig 2. Insert it into the T slot and tighten the insert screw to lock 2 parts securely. Insert the acrylic panel into the assembled frame and attach the bottom bar to hold the acrylic panel. Tighten the screw to fix the frame. Attach the other side pole to the open side of the frame. Tighten the top and bottom insert screws to fix the frame.



Place the shield panel upside down. Attach 1 foot plate onto the bottom and align the holes on the panel with holes on the aluminum tube. Fix the foot with provided screws. Assemble the other foot the same way.



Peel off the protective film and carefully flip the shield panel to its upright position. The assembly is finished.



To expand your sneeze shield to cover more spaces, please visit www.displays2go.com and search for SMSAL47ADD, or simply scan the QR code below to order.



SMSAL47ADD