

ASSEMBLY INSTRUCTIONS
SMSFSMFB30 - Floorstanding Mobile Room Divider



Scan QR code to visit
the product page:



Open the box and lay all the parts and hardware on a soft surface.

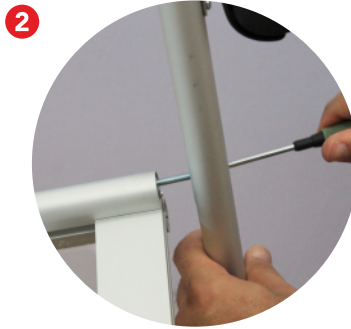
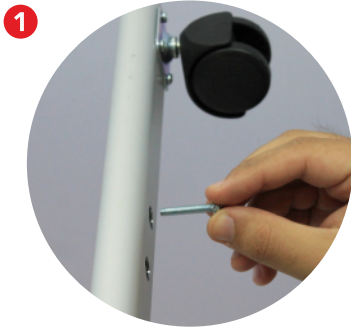


If you have any questions regarding our products, please visit us at www.displays2go.com
or contact D2G customer service 844-221-3388.

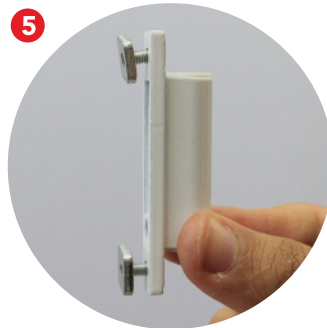
ASSEMBLY INSTRUCTIONS

SMSFSMFB30 - Floorstanding Mobile Room Divider

Attach 1 foot with wheels to the bottom of the divider and fix with screws provided. Repeat the step to assemble the other foot. Carefully lift the assembled divider to its standing position.



To connect multiple dividers and use as wide configuration, assemble the hinges first. hold a hinge and pull the T-slot nuts out, and slide the hinge down from 1 open end of the side frame with the nuts inserted in the T-slot. Use a screw driver to fix the hinge at the desired height.



NOTE:

1. Attach the same type of hinges onto 1 divider and the mating type onto the joining panel.
2. The 2 mating hinges must be fixed at the same height on the 2 dividers
3. Assemble only 1 foot onto the joining divider.

Hold 2 dividers together and align the holes on the mating hinges. Insert a pin into the hole and do the same to all the hinges. The assembly is finished.

