

FLOORSTANDING WHITE BOARD WITH CASTERS - AWBE24RS

IMPORTANT SAFETY INFORMATION:

Please take time to read and understand all of the steps needed to finish the assembly before installing the unit.

if you have any questions regarding our products, please contact D2G customer service.



PARTS AND HARDWARE:



A. White Board X1



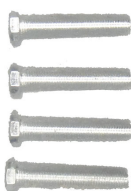
C. Top Attachment X1



D. Bottom Pen tray X1



E. Hanging Racks (Left and Right)



F. Hex Head Screw X4



G. Washer X4



H. Hex Nut X4



B. Base X1



I. Caster X2



J. Caster with Brake X3



K. Hook X2



L. Wood Screw X2



M. Thumb Screw X1



N. Adjustable Post X1

TOOLS INCLUDED:



O. Screwdriver X1

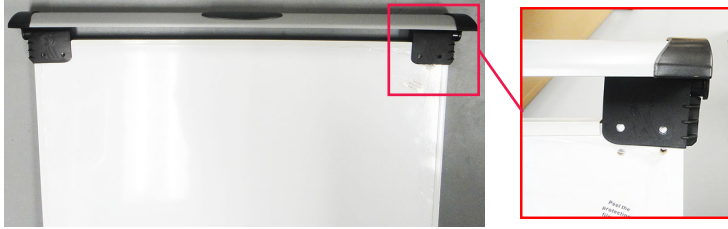


P. Wrench X2

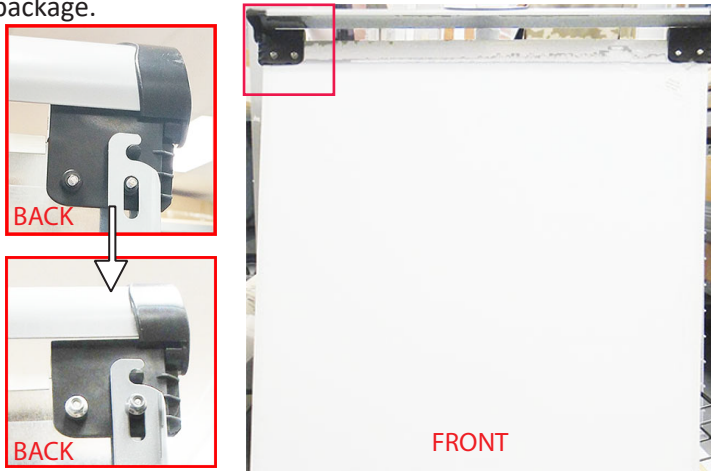
ASSEMBLY INSTRUCTIONS

DISPLAYS2GO

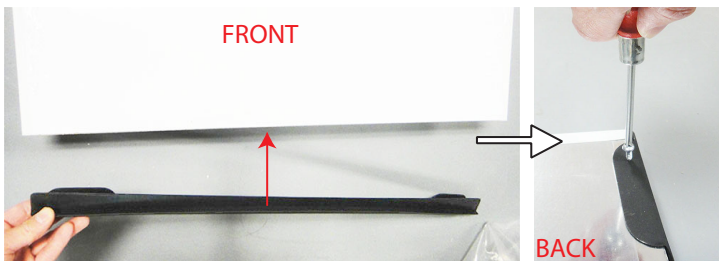
1. Attach Part C to Part A at the top, align screw holes on both sides.



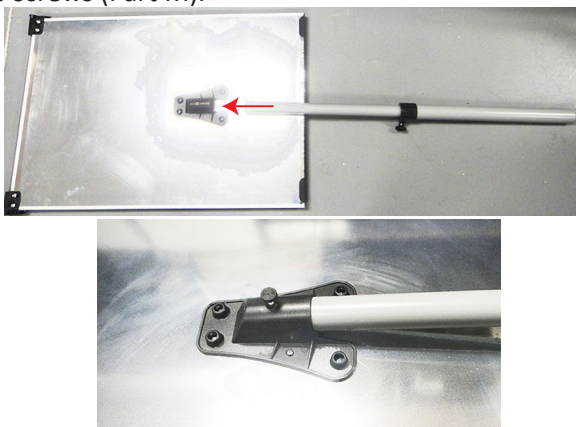
2. Insert (4) Screws (Part F) through holes from the front. Attach Hanging Rack (Part E) at the corner with screw in the cutout, as shown below. Then tighten screws with washers (Part G) and Hex nuts (Part H) using wrenches provided in the package.



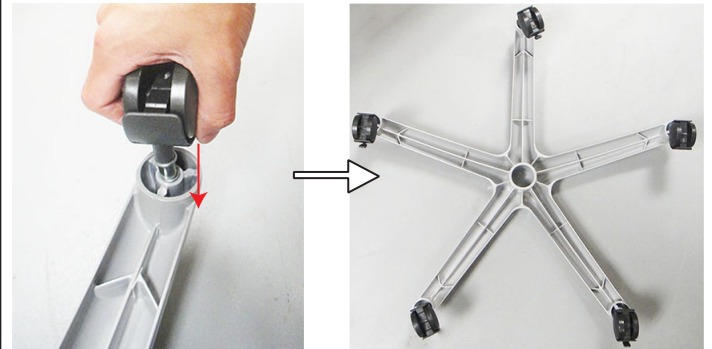
3. Attach Part D to the bottom of Part A, the pen tray should face the front side of Part A. Fix Part D at the back of Part A with Wood Screws (Part L) provided, one screw on each side.



4. Insert Part N into the pole holder at the back of Part A as shown below. Secure the adjustable pole by inserting the thumb screws (Part M).



5. Insert All (5) casters (Part I & Part J) into the bottom of the base. Press down firmly to make sure all casters are inserted securely.



6. Open the top cover (Part C) and clip (2) rubber hooks (Part K) on the white board. Adjust these hooks to desired locations.



7. Lift the pole with the white board, and insert the bottom of the pole into the center of the base. The assembly is finished.



Tips: How to use hanging racks.

