

SKU: FGCTCSCSMG  
FGCTCSCCLGG



Included Pieces:

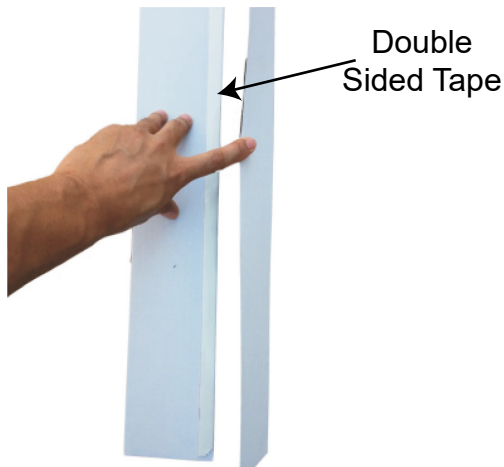


Scan QR code to visit  
the product page:



## ASSEMBLY INSTRUCTIONS

1. Carefully peel off the protective layer and discard. Fold up all long creases 90° with printed graphics facing outside.

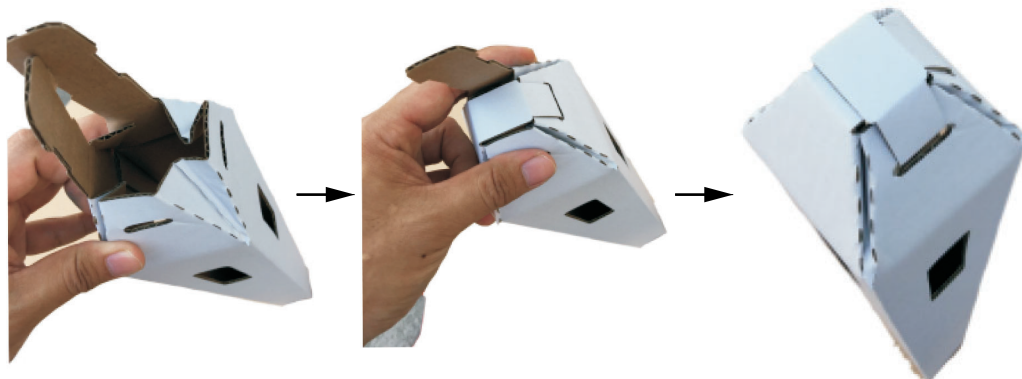


Double  
Sided Tape

2. Attached double-sided tape to the inside of the joining cardboard panel. Be sure the edge lines are aligned. Press down firmly to secure the cardboards.



3. Fold in all 4 corners at top of the unit. Bend the tab at the open corner inward then hold the cone top with one hand. Fold down one tab cross the top and insert the end into the cutout on the other side. Do the same for the other tab at top.



4. The assembly is finished.



If you have any questions regarding our products, please visit us at [www.displays2go.com](http://www.displays2go.com) or contact D2G customer service 844-221-3388.