

ASSEMBLY INSTRUCTIONS

8'X10' SEG BACKWALL - SEG810WSGH

DISPLAYS2GO

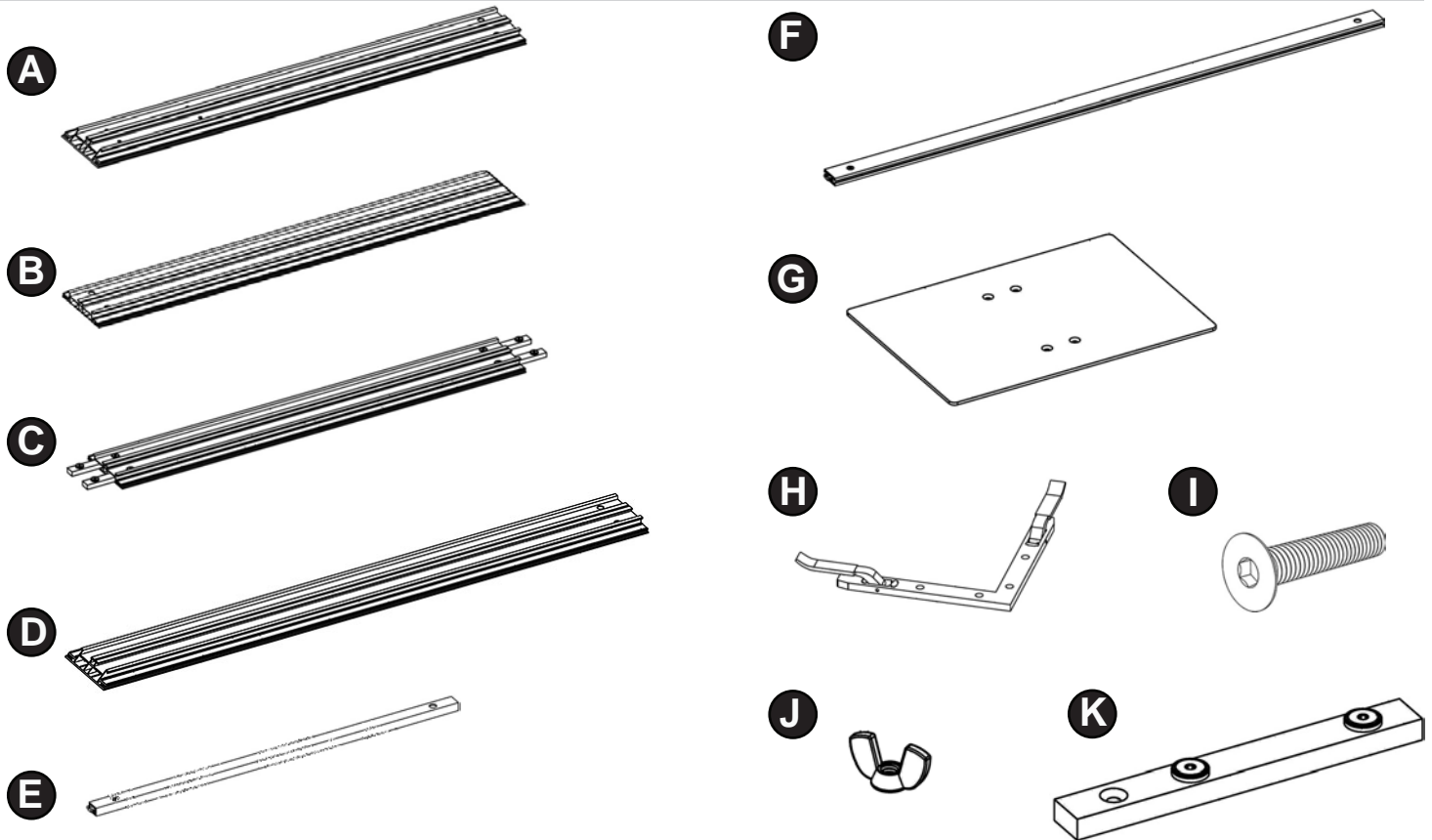
IMPORTANT SAFETY INFORMATION:

Please take time to read all instructions before start assembling the unit. Be sure you fully understand all of the steps needed to finish the assembly. Two or more persons are required.

PARTS LIST

A. Bottom Panel (with holes to fit Foot Plate)	X2
B. Top Panel	X2
C. Middle Panel	X2
D. Side Panel	X4
E. Support Bar - Horizontal	X4
F. Support Bar - Vertical	X2
G. Foot Plate	X2
H. Corner Connector	X8
I. Flat Head Screw	X8
J. Wing Nut	X8
K. Bar Connector	X7

Tools included:



NOTE:

- (1) Lay out all extrusion panels on a clean, non-abrasive surface and identify each part.
- (2) Make sure that you have all included parts before you begin the assembling.
- (3) The SEG frame is 8' in height and 10' in width. The assembling space must be large enough to house the entire frame.
- (4) For your safety, DO NOT use ladder when assembling the SEG backwall.
- (5) Every panel/bar has numbers on both ends. **Assemble the frame by matching the numbers.**

ASSEMBLY INSTRUCTIONS

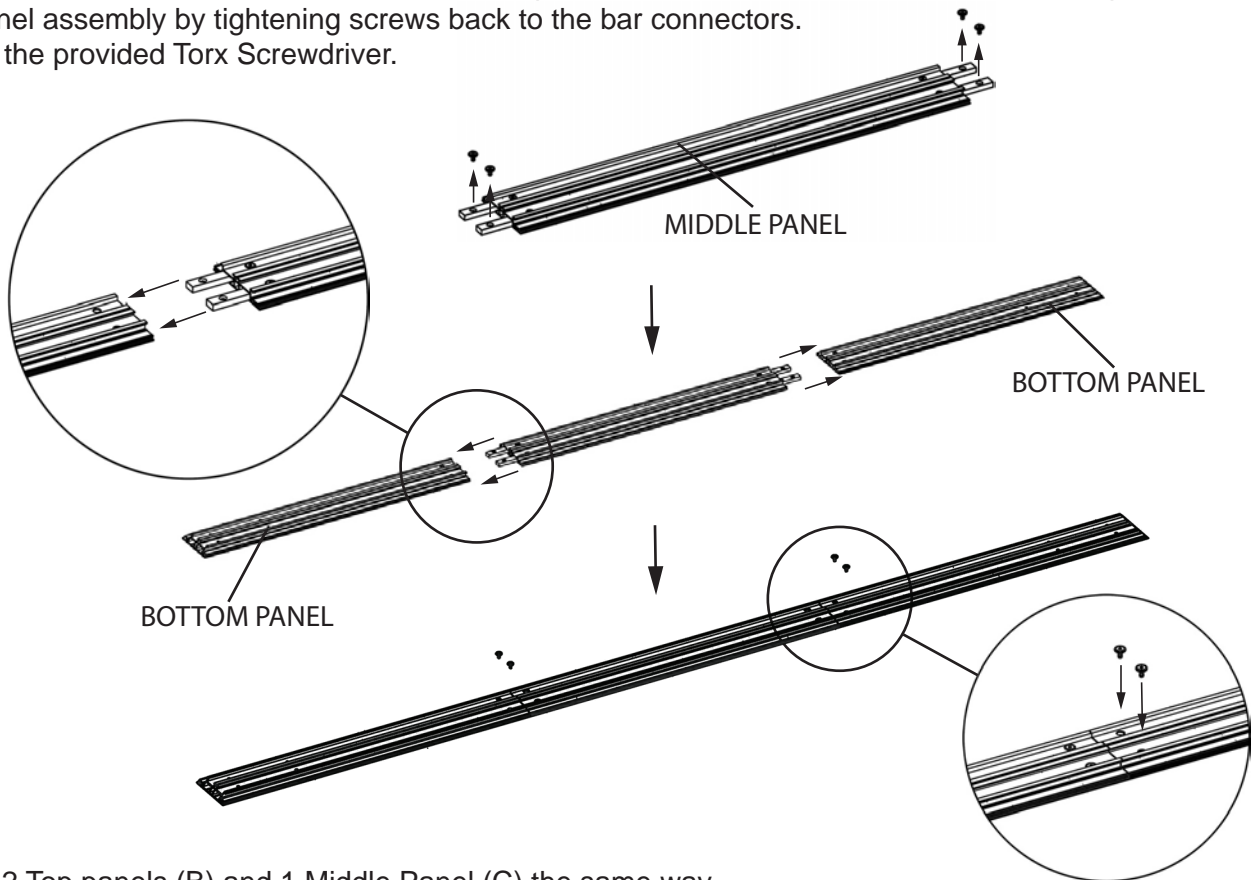
8'X10' SEG BACKWALL - SEG810WSGH

DISPLAYS2GO

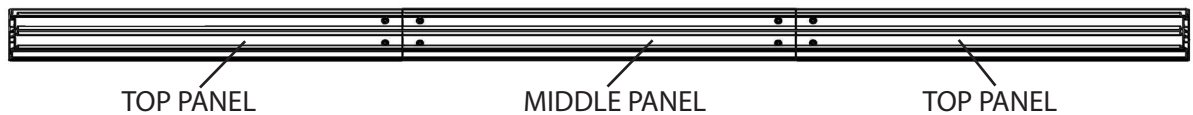
Step 1. Connect 2 Bottom Panels (Part A) with 1 Middle Panel (C).

Remove screws from bar connectors on the middle panel. Insert bar connectors into the bottom panels, and fix the bottom panel assembly by tightening screws back to the bar connectors.

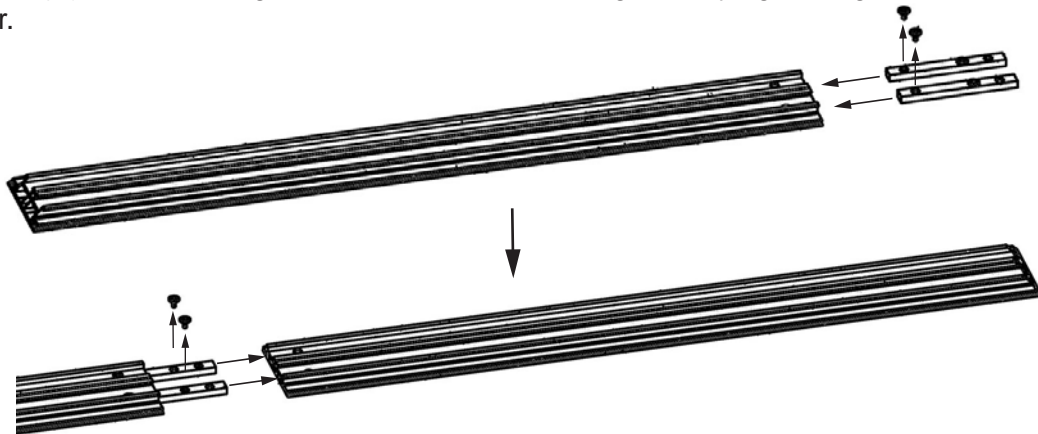
Tips: Use the provided Torx Screwdriver.



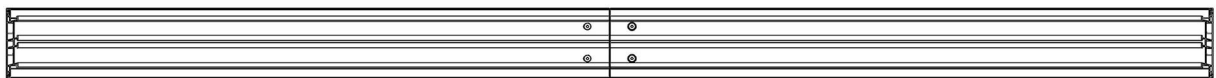
Assemble 2 Top panels (B) and 1 Middle Panel (C) the same way.



Step 2. Remove 1 screw on each of 2 Bar Connectors (K) and insert it into the flat end of the Side Panel (D). Tighten screws back in to fix connecting bars. Remove screws on the other side and insert fixed Bar Connectors into the Side Panel (D) with matching number. Fix the connecting bars by tightening screws back with provided Torx screw driver.



Assemble the other side the same way.



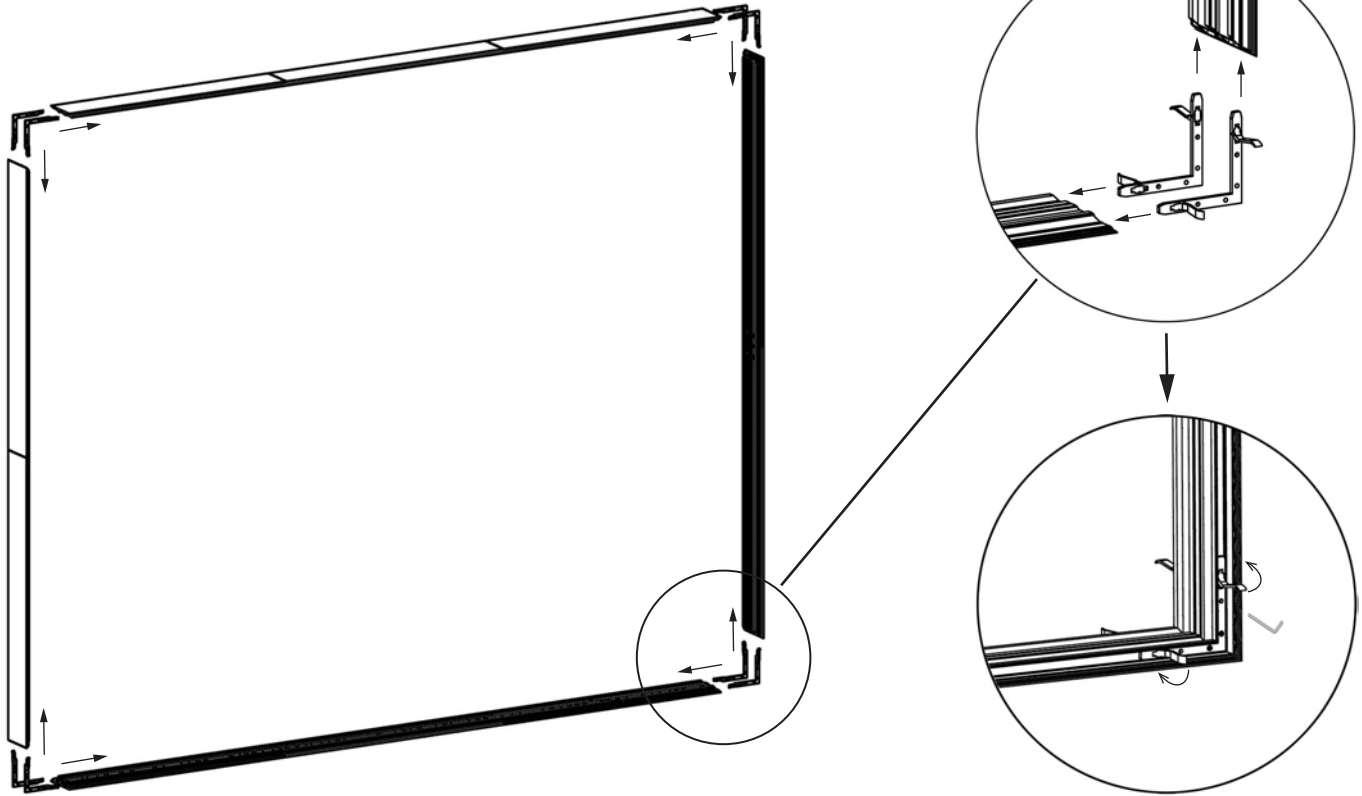
ASSEMBLY INSTRUCTIONS

8'X10' SEG BACKWALL - SEG810WSGH

DISPLAYS2GO

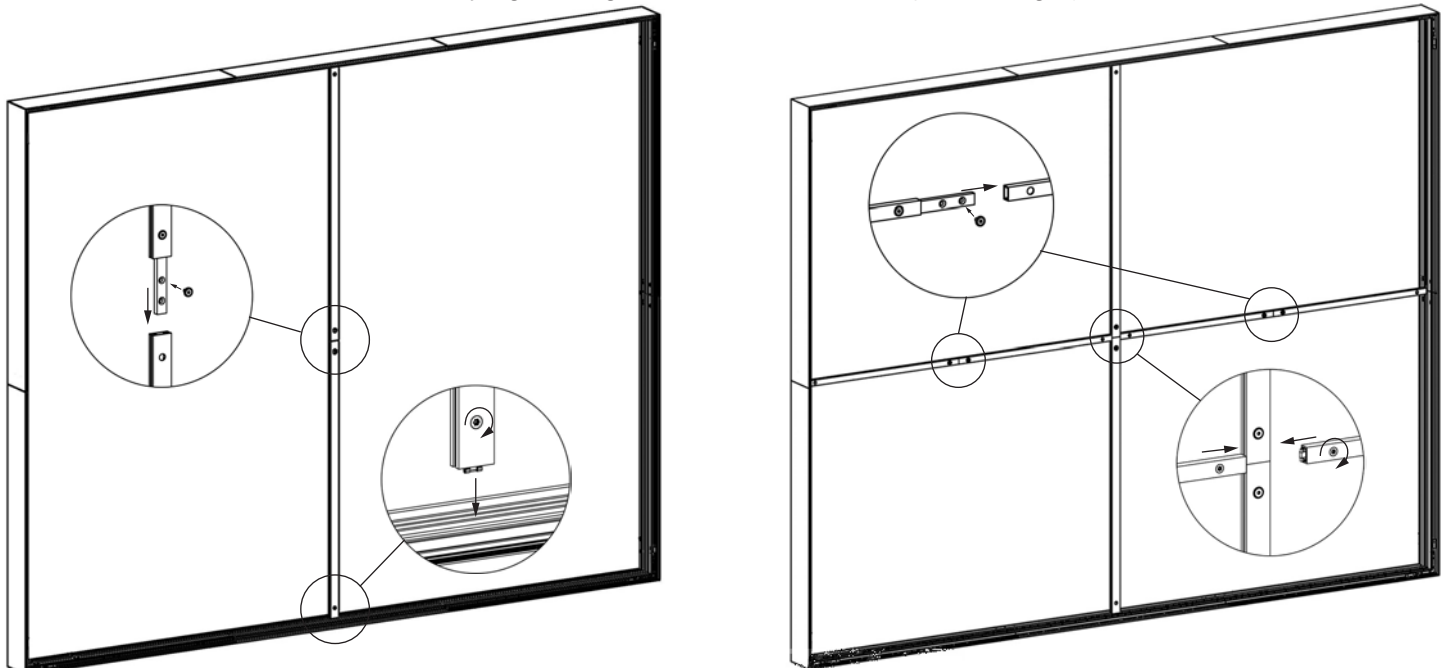
Step 3. Connect all assembled panels with Corner Connectors (H) by matching the number on the labels. Insert Corner Connectors (H) into the channels on sides of the frame panel. Make sure the panels fit together with no gap, then tighten the insert screw with the provided Allen key. Secure Corner Connectors by pushing the handles down on both sides.

Repeat the step for other corners until the frame is securely assembled.



Step 4. Assemble 2 vertical Support Bars (F) with 1 Bar Connector (H). Place the assembled support bar in the middle of the SEG frame by matching the numbers on parts (bottom left). Secure the support bar to the center "T" slot at top and bottom by tightening the screws at both ends.

Assemble 4 horizontal Support Bars (E) the same way. Secure 2 sets of assembled horizontal support bars with the vertical bar and the SEG frame by tightening the screws as shown (bottom right).

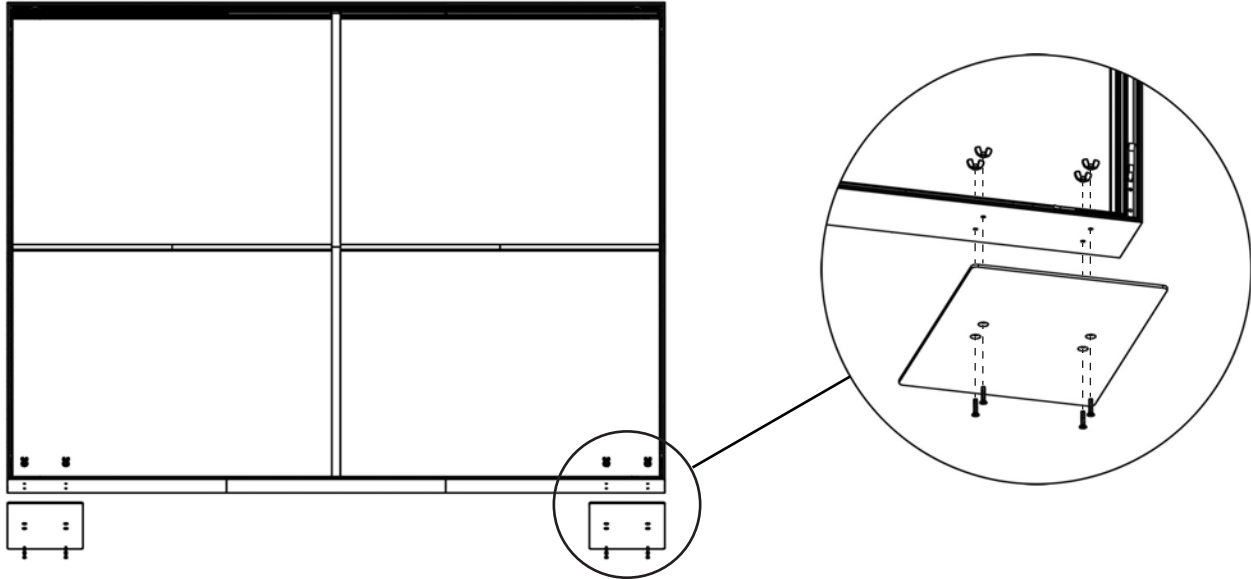


ASSEMBLY INSTRUCTIONS

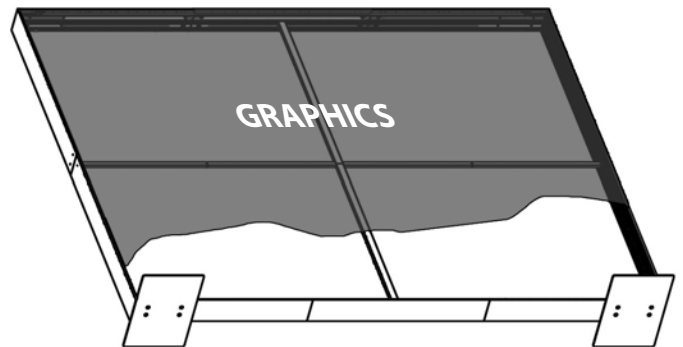
8'X10' SEG BACKWALL - SEG810WSGH

DISPLAYS2GO

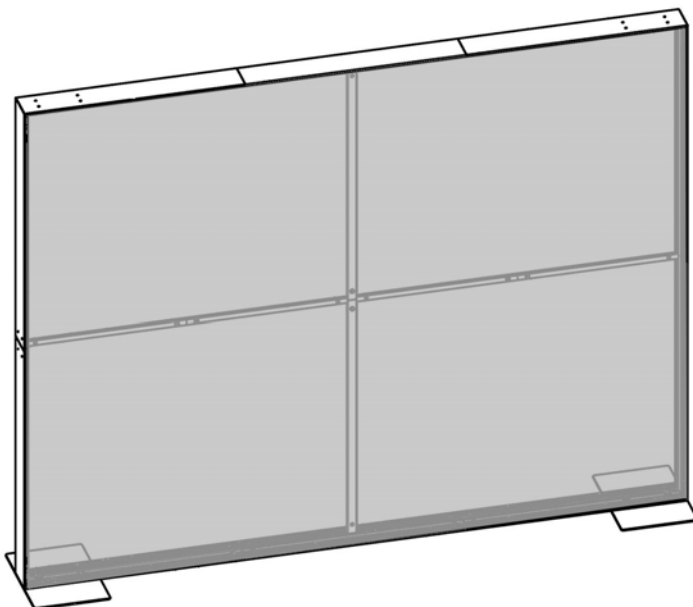
Step 5. Fix Foot Plates (G) to the bottom of the assembled SEG frame by using Hex Screws (I) and Wing Nuts (J).



Step 6. Assemble the SEG graphics to one side of the frame by inserting the silicon edges into the grooves on the side of the frame. (For double sided only) Carefully flip the frame and assemble the other side the same way. Make sure the graphic is fully stretched.



Step 7. Carefully lift the the assembled backwall up to its standing position.



Scan QR code to visit
the product page:



If you have any questions regarding our products, please visit us at www.displays2go.com or contact D2G customer service 844-221-3388.