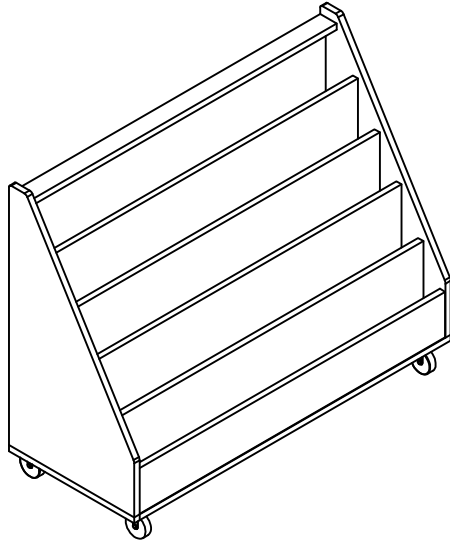


RWDRYERS5 - Roll and Write 5 Tier Book Display with Dry Erase Board

V21.06



2 people are required

Tool Needed:



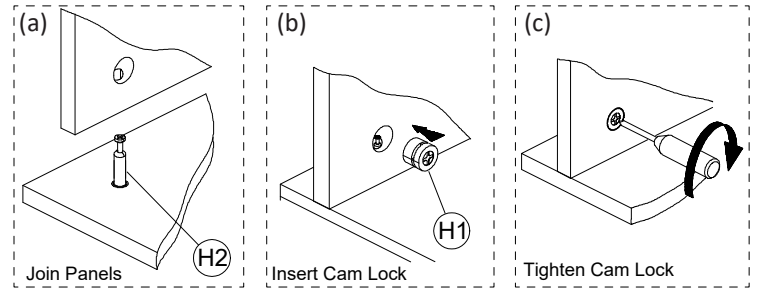
Phillips Screwdriver

PARTS LIST

No.	Qty.	Description	No.	Qty.	Description
A	1	Top Panel	H1	56	Cam Lock
B1	1	Side Panel-Left	H2	56	Cam Post
B2	1	Side Panel-Right			
C	1	Bottom Panel	H3	2	Caster with Brake
D	1	Back Panel			
E	1	Vertical Panel - Front	H4	2	Caster
F	3	Vertical Panel - Middle			
G	3	Shelf	H5	16	Wood Screw and Washer
H	1	Shelf			
I	1	Front Panel	H6	10	Wood Screw

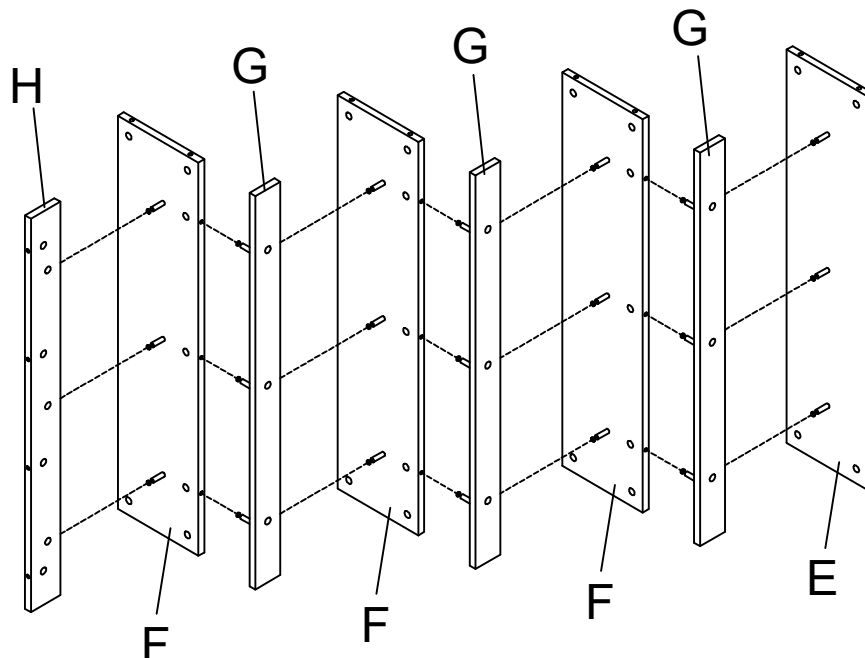
How to join 2 boards with CAM lock:

- Insert cam post into flat surface of a board and fix it with a screw driver. Do not over tighten. Fit the hole in the edge of the joining board over the cam post.
- Insert the cam lock into the cam hole. Be sure the opening section on the back fits the head of the cam post.
- Use a screw driver to turn the cam lock clockwise so it locks onto the head of the cam post. Do not over tighten.



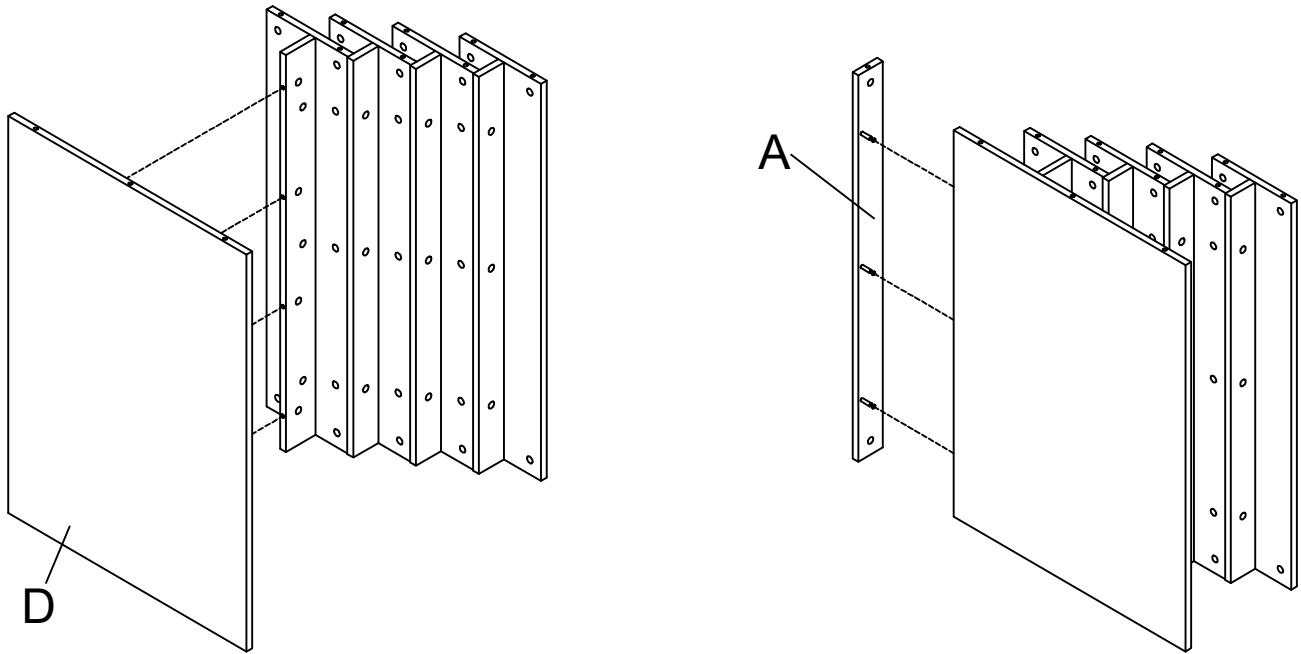
WORK ON A CLEAN SMOOTH SURFACE

- Identify Vertical Panels (E and F), and Shelves (G and H) as marked in the image below. Insert 3 cam posts (H2) into holes on the Vertical Panel E. Tighten only until snug. Do the same for all Panel F and Shelf G. Attach 1 Shelf G to Panel E by inserting cam posts into corresponding holes as shown. Insert 3 cam locks into the cam lock holes on Shelf G, use a phillips screw driver to turn cam locks clockwise to secure cam posts. Attach 1 Panel F to Shelf G and fix it with cam locks. Assemble the remaining Panel F, G and Panel H in sequence as shown in the image below.
DO NOT over-tighten.



2. Insert 4 cam posts into the Back Panel D. Connect the Panel D with assembled panels in Step 1 and use cam locks to fix the back panel.

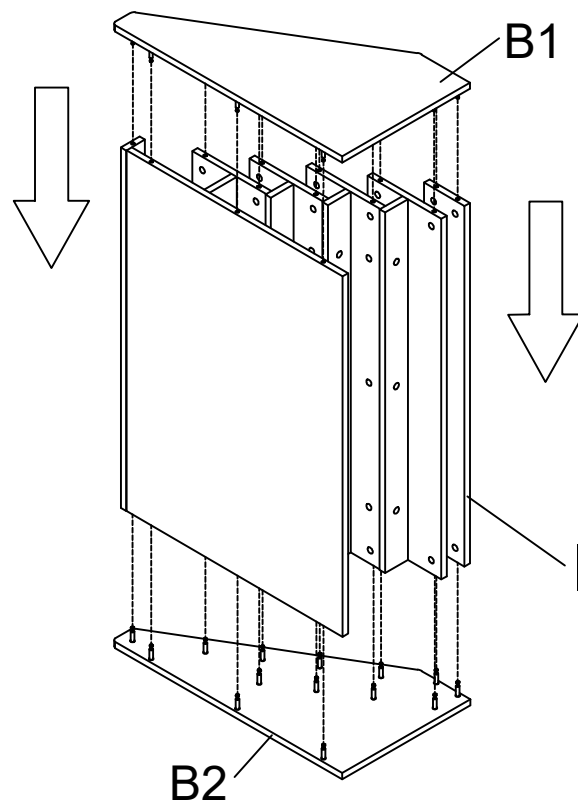
Insert 3 cam posts into the Top Panel A and attach it to the top of Panel D. Use cam locks to secure the top panel.



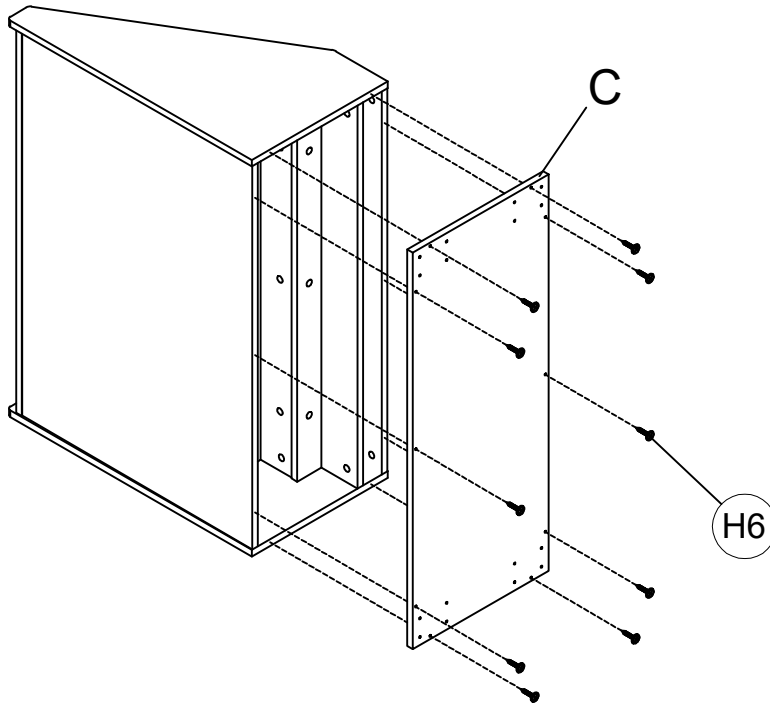
3. Insert cam posts into Side Panels B1 and B2.

Place the Right Side Panel B2 on the floor with cam post side facing up. Attach Right Side Panel B2 to the right side of the finished panel assembly in Step 3, and attach Front Panel I to the B2 panel as shown. Use cam locks to secure the right side panel.

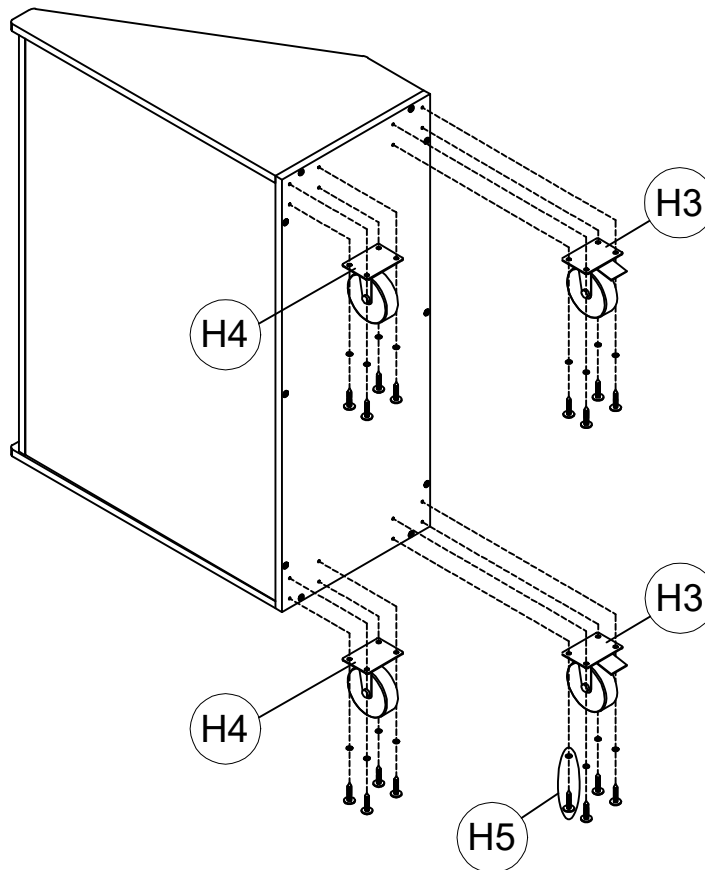
Attach Left Side Panel B1 to the other side and fix it with the remaining cam locks.



4. Attach Bottom Panel C to the main unit and align pre-drilled holes on all sides. Use Wood Screws (H6) to secure the bottom panel to the unit.



5. Attach 2 Casters with Brake H3 at the front and fix them with Wood Screws and Washers H5. Fix the other 2 Casters H4 at the back with the remaining wood screw and washers the same way. The assembly is finished.



Scan QR code to visit the product page:

