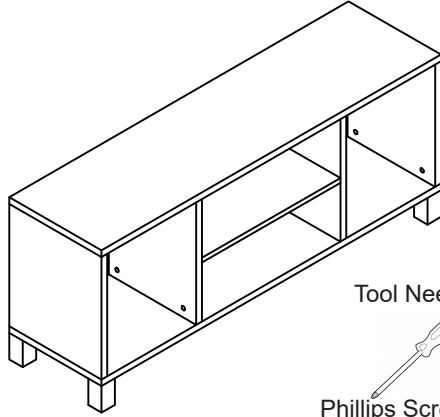


58" TV Console

TVCON58MO
TVCON58SS
TVCON58OK



2 people
are required



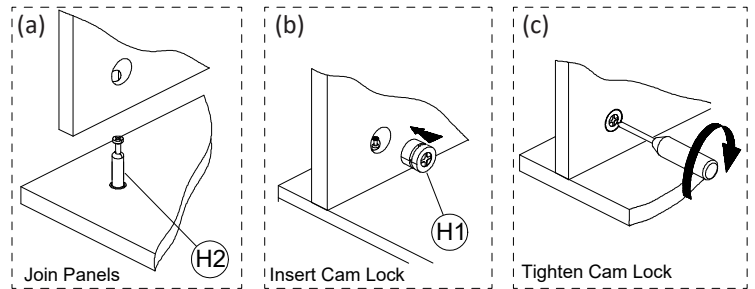
Tool Needed:



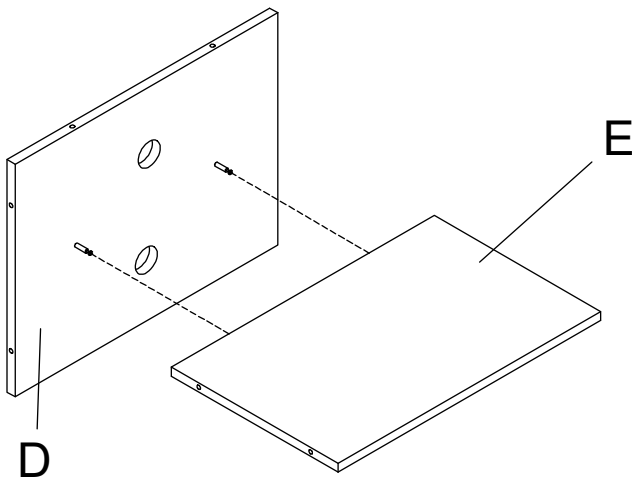
PARTS LIST					
No.	Qty.	Description	No.	Qty.	Description
A	1	Top Panel	H1	46	Cam Lock
B	4	Side Panel	H2	46	Cam Post
C	1	Bottom Panel	H3	5	Foot Bolt
D	3	Back Panel	H4	4	Grommet Cap
E	1	Shelf	H5	4	Grommet Sleeve
F	5	Foot			

How to join 2 boards with CAM lock:

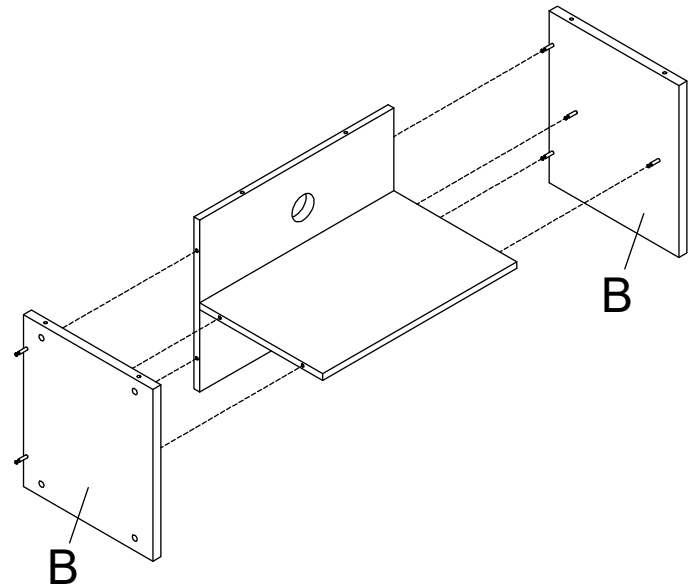
- Insert cam post into flat surface of a board and fix it with a screw driver. Do not over tighten. Fit the hole in the edge of the joining board over the cam post.
- Insert the cam lock into the cam hole. Be sure the opening section on the back fits the head of the cam post.
- Use a screw driver to turn the cam lock clockwise so it locks onto the head of the cam post. Do not over tighten.



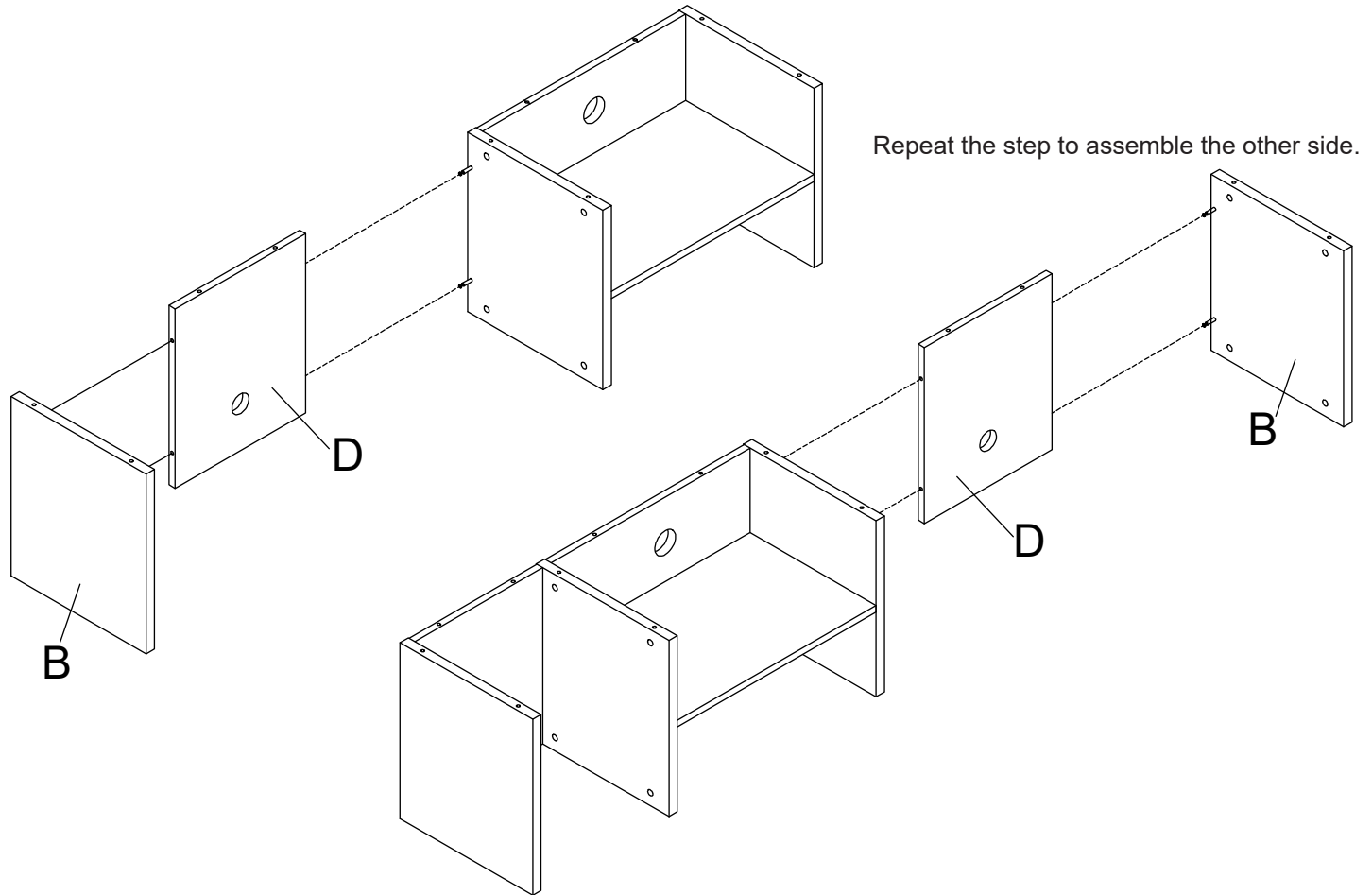
- Insert 2 cam posts (H2) into holes on 1 Back Panel D. Tighten only until snug. Fit cam holes in the edge of 1 Shelf E over the cam posts. Insert 2 cam locks (H1) into cam lock holes on the Shelf E, use a phillips screw driver to turn cam locks clockwise to secure cam posts. **DO NOT over-tighten.**



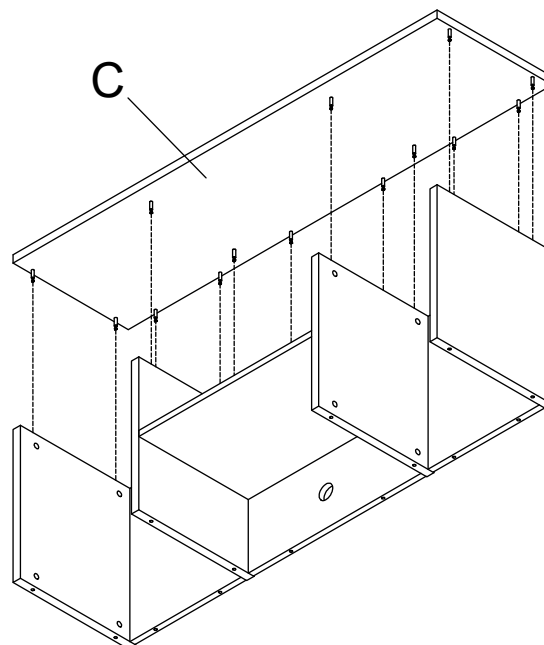
- Insert cam posts into Panel B that has cam holes on both sides. Sandwich the assembled Panel D and E with Panel B by inserting cam posts into the cam lock holes as shown below. Insert cam locks into cam lock holes then turn cam locks clockwise with a phillips screw driver to secure cam posts.



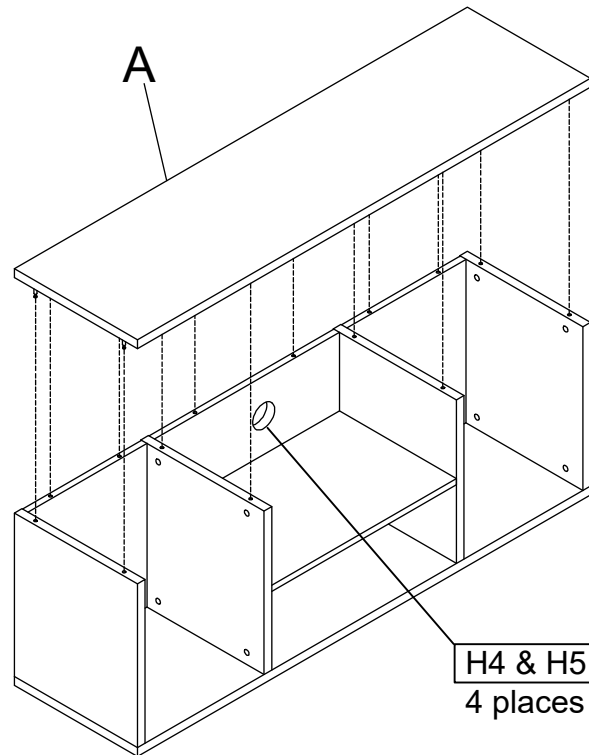
3. Insert cam posts into Panel B that has cam holes on one side. Do the same for another side Panel B. Attach 1 Panel D to the panel assembled in Step 2 and use cam locks to securely lock it in place. Attach 1 Panel B to the other side of Panel D and secure it with cam locks as shown.



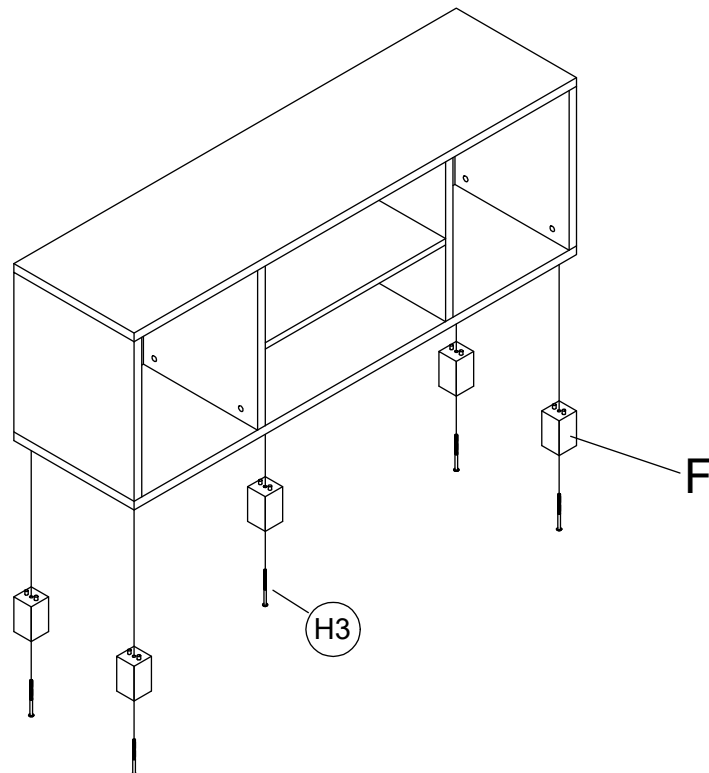
4. Insert 14 cam posts into the Bottom Panel C. Carefully turn the finished assembly in Step 3 upside down with the bottom side facing up. Attach Panel C to the panel assembly and secure it with cam locks.



5. Insert the remaining cam posts into the Top Panel A.
 Carefully flip the finished assembly in Step 4 so the top side facing up. Insert 1 Grommet (H5) into each grommet hole on the back panel and press in until it fit snugly. Attach the Grommet Caps (H4) to the cable grommets. Assemble the Panel A on top of it by inserting the cam posts into corresponding holes. Fix the top panel with the rest cam locks.



6. Insert 5 Feet (F) into the Bottom Panel C and secure them with 5 Bolt (H3).
 Carefully turn the TV console to its standing position. The assembly is finished.



Scan QR code to visit the product page:

