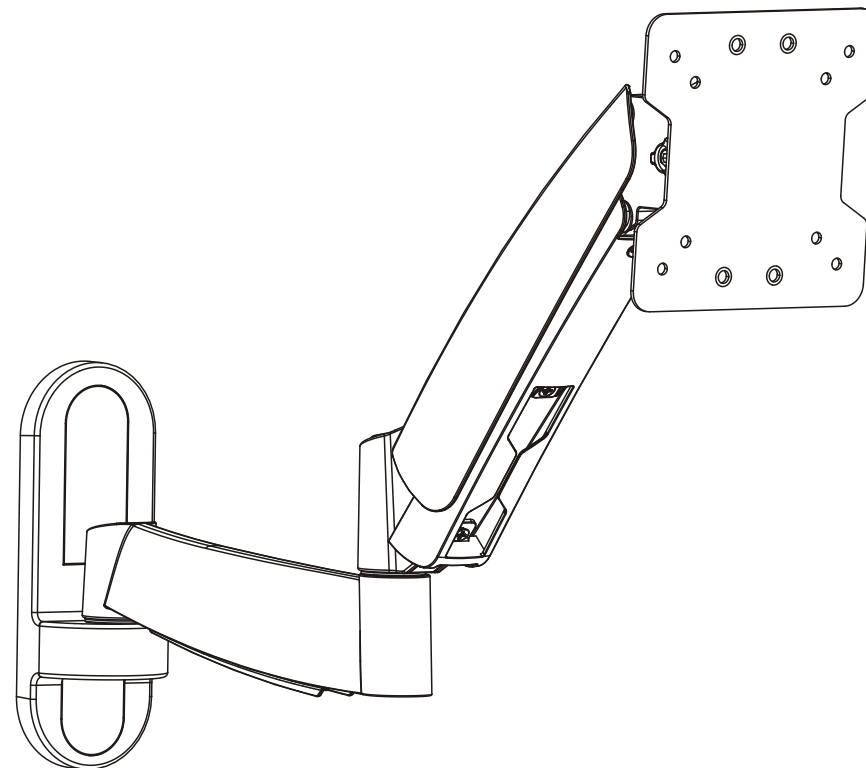


## Counterbalance Full Motion LCD Wall Mount

### Maintenance

- Check that the bracket is secure and safe to use at regular intervals(at least every three months).
- Please contact your distributor if you have any questions.



**CAUTION:** DO NOT EXCEED  
RATED LISTED WEIGHT. SERIOUS  
INJURY OR PROPERTY DAMAGE  
MAY OCCUR!



75x75  
100x100



2.5~15kg  
(5.5~33lbs)

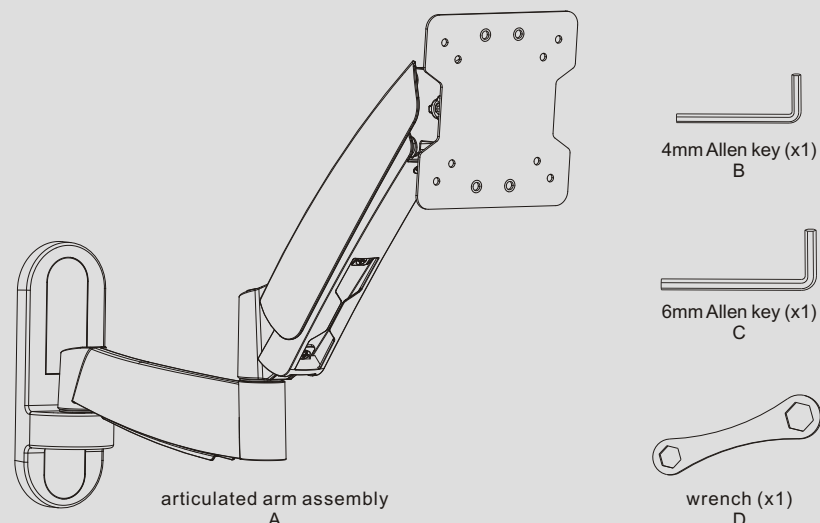
**NOTE:** Read the entire instruction manual before you start installation and assembly.

## ⚠ WARNING

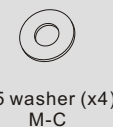
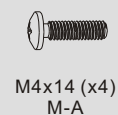
- Do not begin the installation until you have read and understood all the instructions and warnings contained in this installation sheet. If you have any questions regarding any of the instructions or warnings, please contact your local distributor.
- This mounting bracket was designed to be installed and utilised **ONLY** as specified in this manual. Improper installation of this product may cause damage or serious injury.
- This product should only be installed by someone with good mechanical ability who has basic building experience and fully understands this manual.
- Make sure that the supporting surface will safely support the combined weight of the equipment and all attached hardware and components.
- If mounting to wood wall studs, make sure that mounting screws are anchored into the center of the studs. The use of a stud finder is highly recommended.
- Always use an assistant or mechanical lifting equipment to safely lift and position the equipment.
- Tighten screws firmly, but do not over tighten. Over tightening can cause damage to the items, This greatly reduces their holding power.
- This product is intended for indoor use only. Using this product outdoors could lead to product failure and personal injury.

## Component Checklist

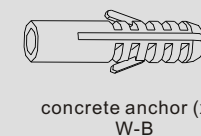
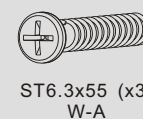
**IMPORTANT:** Ensure that you have received all parts according to the component checklist prior to installation. If any parts are missing or faulty, telephone your local distributor for a replacement.



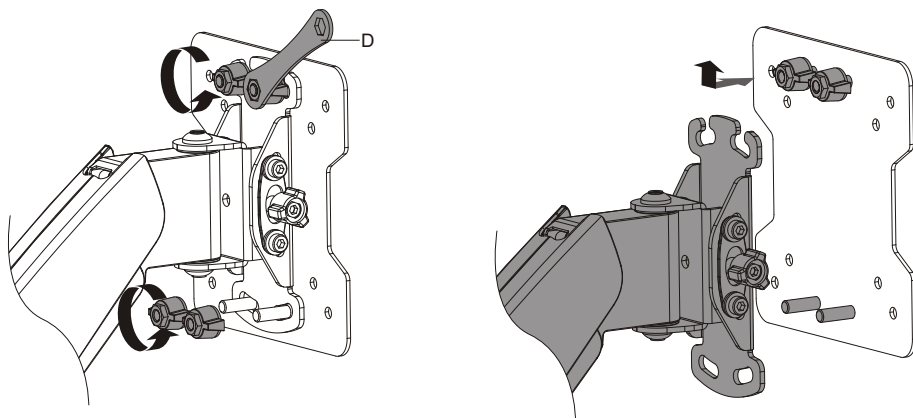
### Package M



### Package W



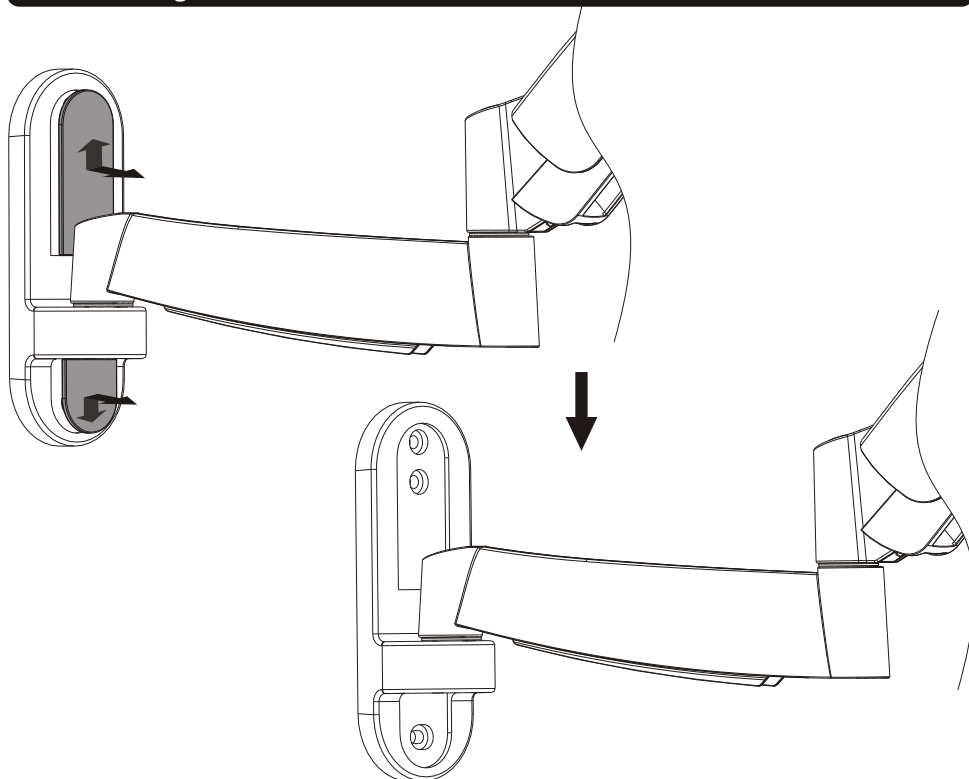
## 1. Separating the VESA Plate from the Wall Mount



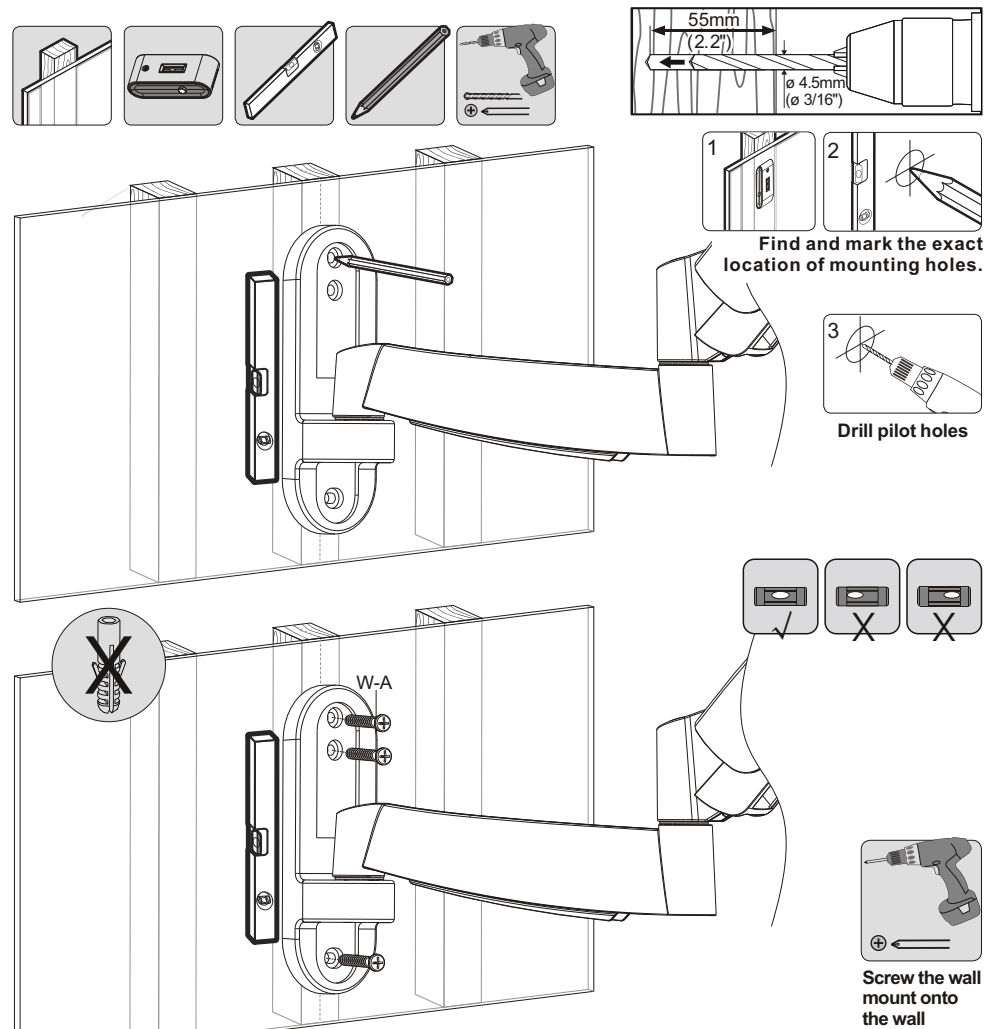
- Loosen the upper knobs.
- Then remove the lower knobs.

Remove the VESA plate.

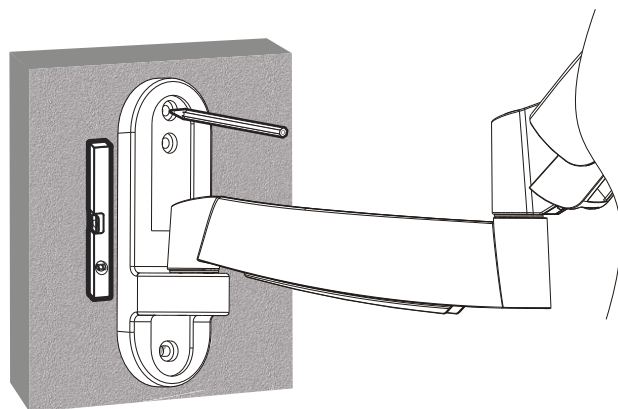
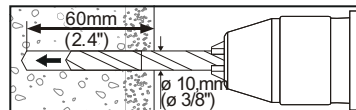
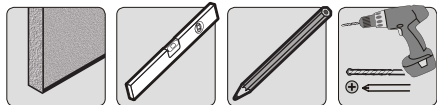
## 2. Removing the Decorative Covers



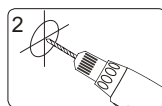
## 3a. For Wood Stud Wall Mounting



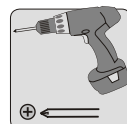
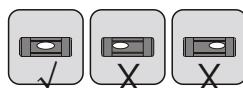
### 3b. For Solid Brick and Concrete Mounting



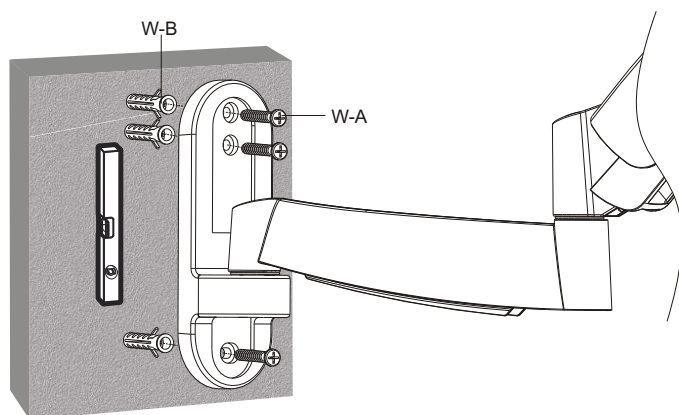
1  
Mark the exact  
location of  
mounting holes



2  
Drill pilot holes



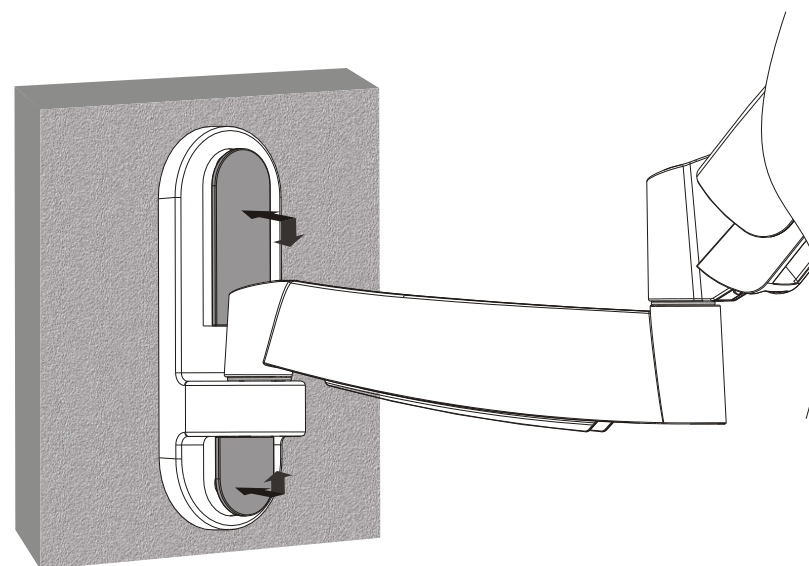
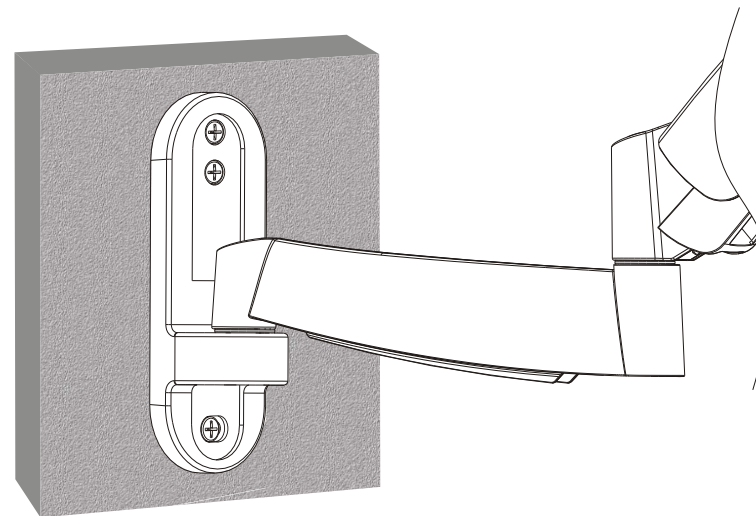
Screw the wall  
mount onto  
the wall



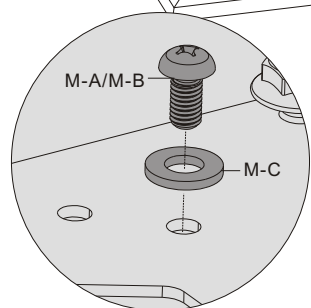
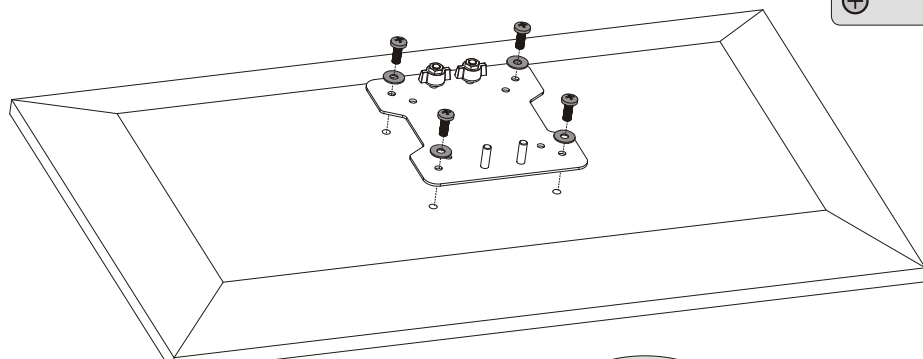
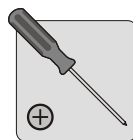
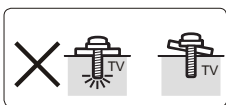
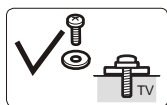
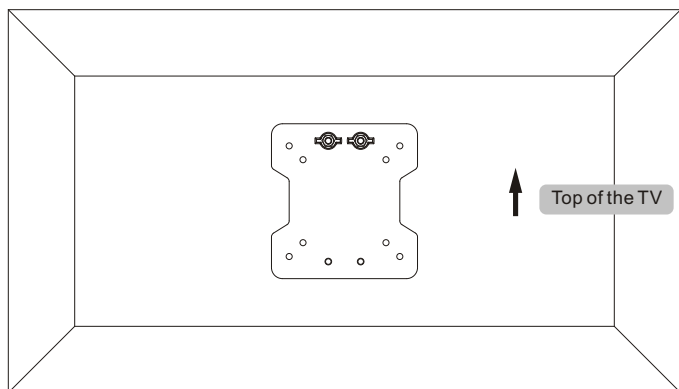
### ⚠ WARNING

Installers must verify that the supporting surface will safely support the combined weight of the equipment and all attached hardware and components.

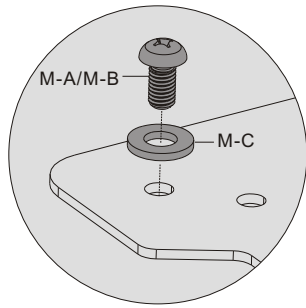
### 4. Installing the Decorative Covers



## 5. Installing the VESA Plate



or



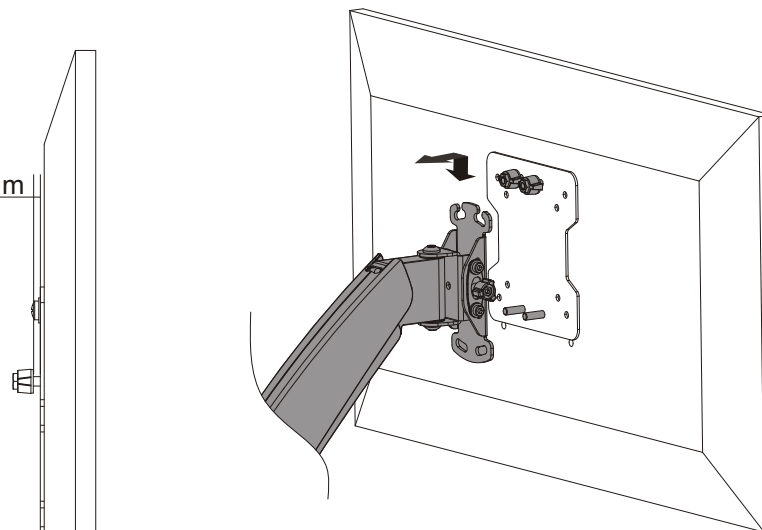
Screw the VESA plate onto the TV.

**!** Tighten all screws but do not over tighten.

## 6. Hooking the TV onto the Wall Mount

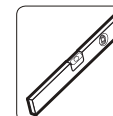
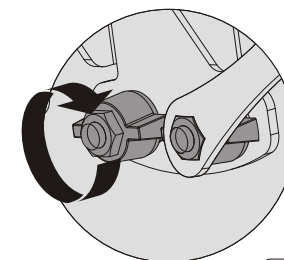
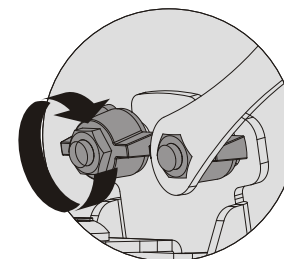
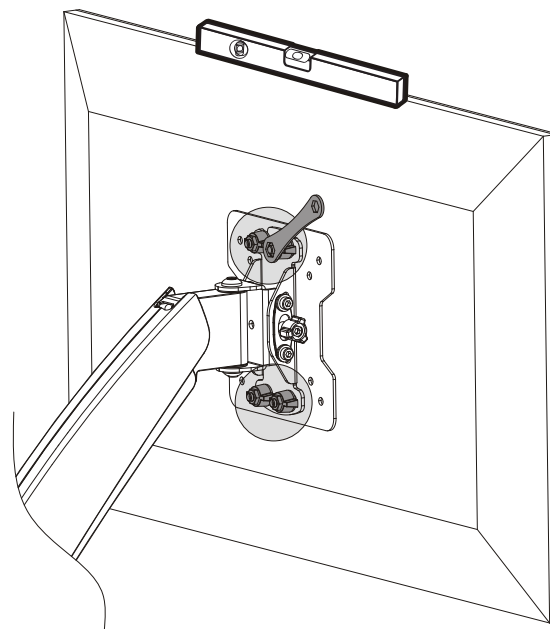


4mm



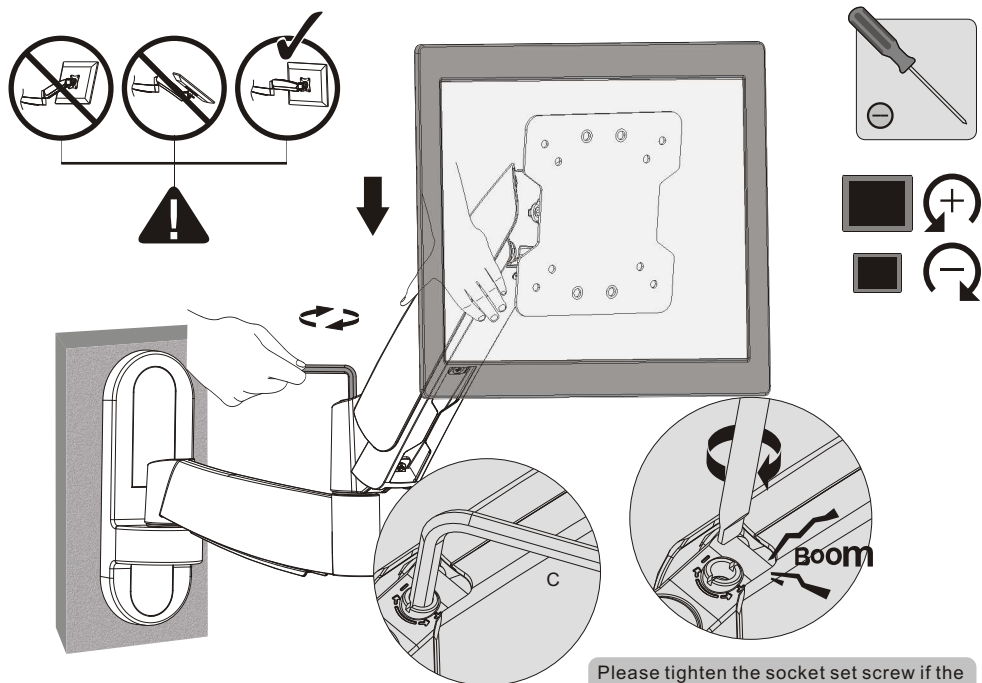
Loosen the upper knobs leaving a 4mm space to the VESA plate.

Hooking the TV onto the wall mount



- Level the TV.
- Place the lower knobs and tighten all knobs.

## 7. Tension Adjust

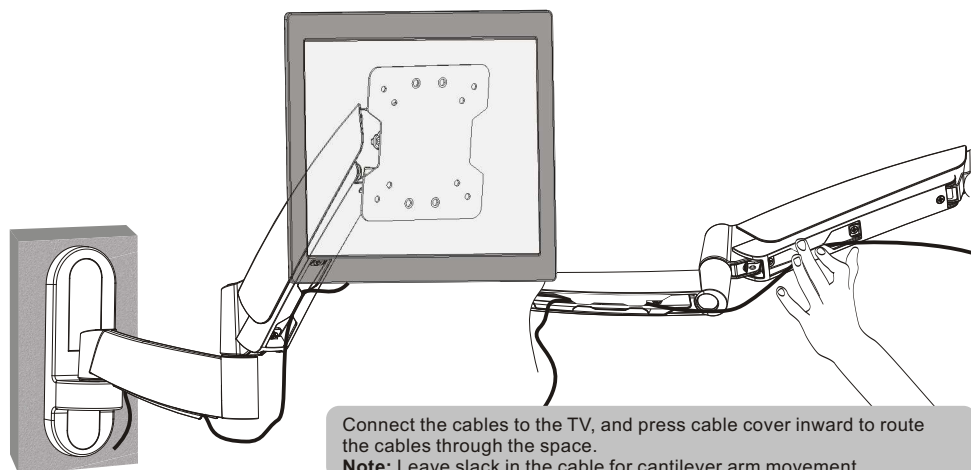


Please tighten the socket set screw if the joints make popping sounds during use.

Please keep the arm level during tension adjustment. Use a proper Allen key to slightly loosen or tighten the adjustment screw according to the TV weight.

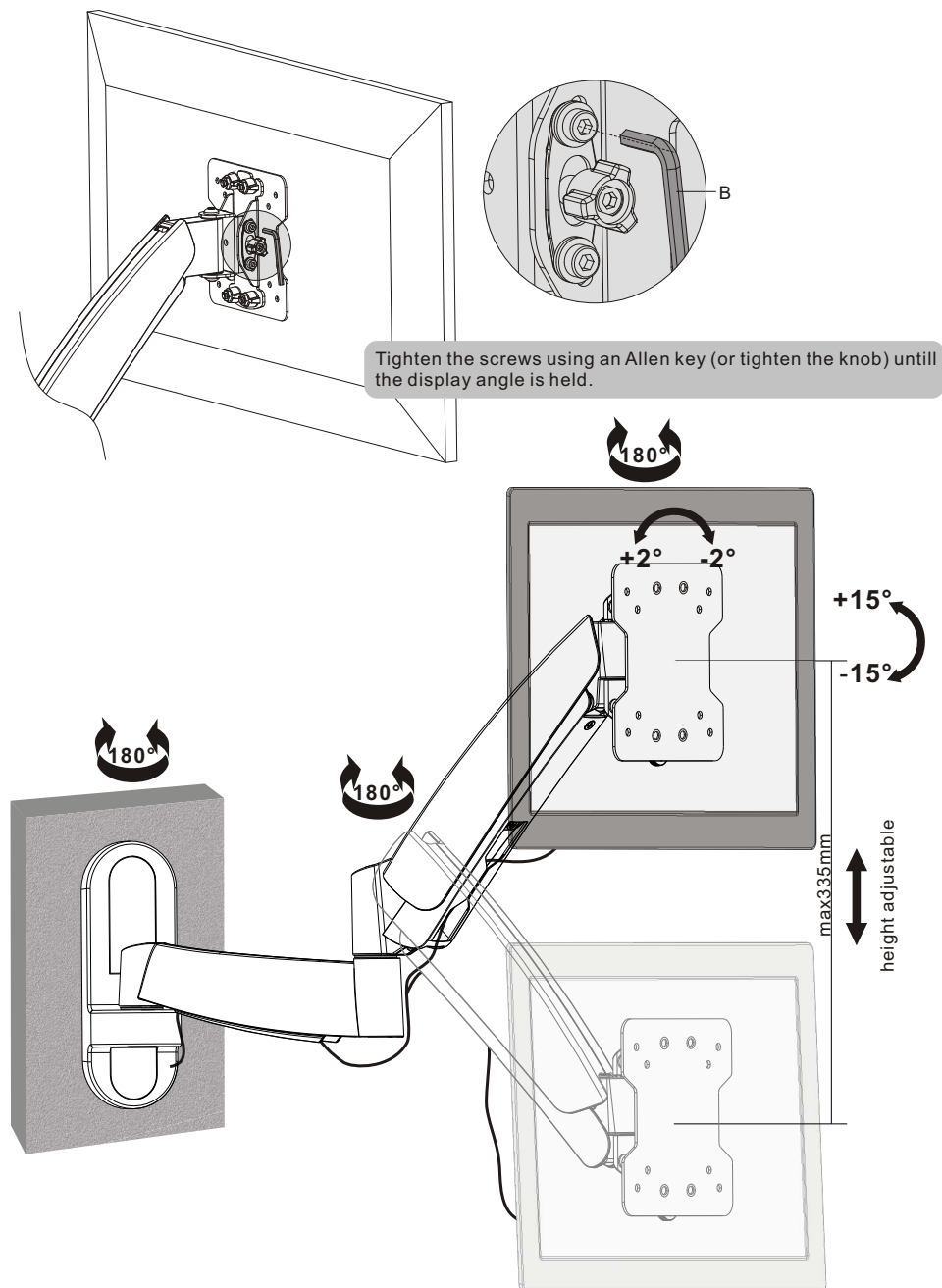
If TV settles on its own, rotate adjustment screw towards the "+" symbol.  
If TV rises on its own, rotate adjustment screw towards the "-" symbol.

## 8. Cable Management



Connect the cables to the TV, and press cable cover inward to route the cables through the space.  
**Note:** Leave slack in the cable for cantilever arm movement.

## 9. Adjustment



Tighten the screws using an Allen key (or tighten the knob) until the display angle is held.

Adjust to the desired position or tilt.