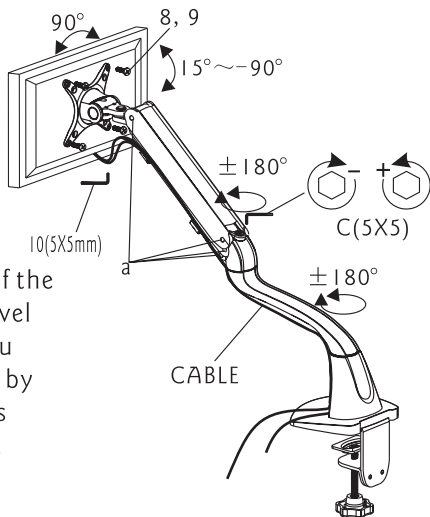


Part 3-Attaching TV plate to screen

Center TV plate on back of the screen and align the four mounting holes. Select screws(8,9). Attach TV plate to screen using four selected screws (8,9). Tighten screws firmly. Do not overtighten. Use allen wrench(10) to tighten and loosen the tension screw. Do not overtighten and do not loosen to the point the screws come out. This dowel(a) can't be disassembled at will. Use the Allen key provided to adjust the weight capacity. Twist the Allen key in a clockwise direction for less weight: counterclockwise direction for more weight.



After installation, if the monitor isn't as level with desk table, you can adjust monitor by your hand until it is level with the desk.

Thank you for choosing our product

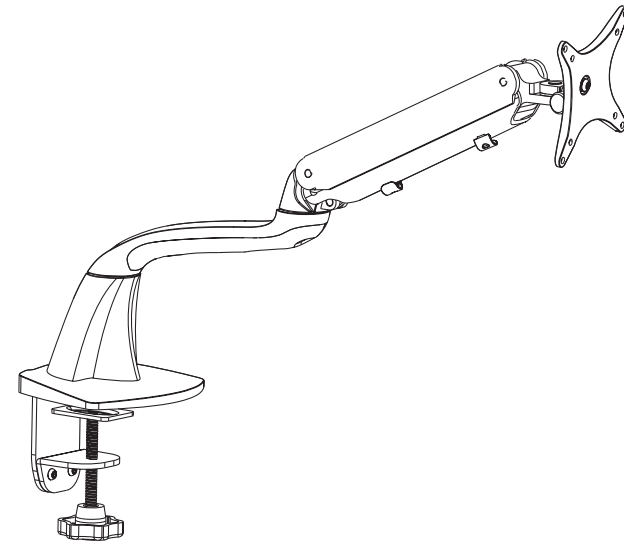
⚠ Warning

This product contains small items that could be a choking hazard if swallowed. Keep these items away from young children!

1. Make sure these instructions are read and completely understood before attempting installation. If you are unsure of any part of this installation, contact a professional installer for assistance.
2. The wall or mounting surface must be capable of supporting the combined weight of the mount and the display; otherwise the structure must be reinforced.
3. Safety gear and proper tools must be used. A minimum of two people are required for this installation. Failure to use safety gear can result in property damage, serious injury or death.

DISPLAYS2GO INSTALLATION GUIDE

Item No.:LTGSPNG1A

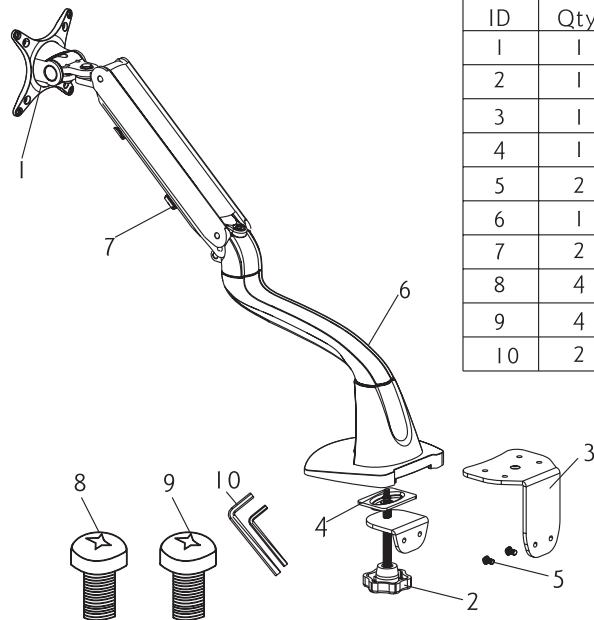


- TV Size Range: 10" to 30"
- Maximum Weight Capacity: 2.5~6.5kg / 5.5~14.3lbs
- Integrated Cable management
- Angle Adjustable

⚠ CAUTION

Please read this guide before installation.
Ensure the correct installation. Keep away from high frequency or power equipment to avoid disturbance. Choose desk to put this product.
We can not be responsible for any damage caused by wrong installation.

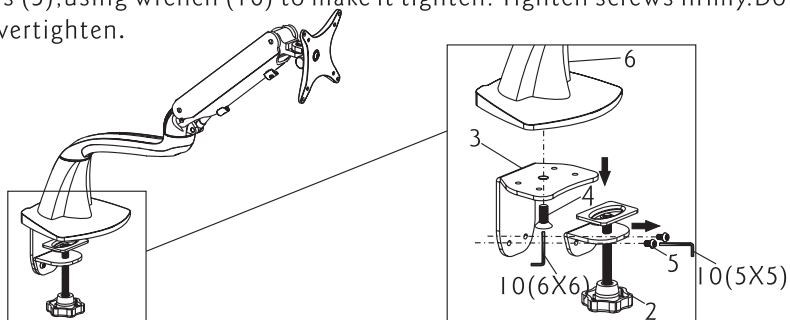
Hardware Kit:



ID	Qty	Description
1	1	TV plate
2	1	Hand handle
3	1	Bottom support
4	1	M10X20 bolt
5	2	M6X10 bolt
6	1	Connected arm
7	2	Cable cover
8	4	M4×12mm bolt
9	4	M5×12mm bolt
10	2	5X5,6X6 Wrench

Part 1-Install bottom bracket

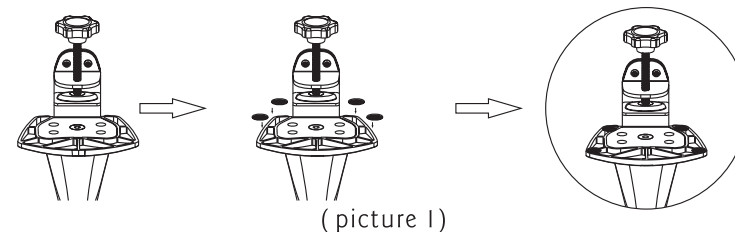
First install the bottom bracket. Connect the bottom support(3) and the connected arm (6) with the screws (4) by wrench(10). Do not tighten these screws. Then put the hand handle(2) onto the bottom support(3) with screws (5), using wrench (10) to make it tighten. Tighten screws firmly. Do not overtighten.



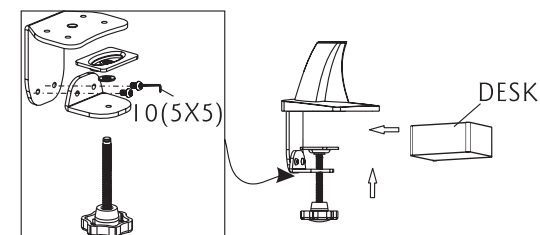
Part 2-Fitting the bottom support on the desk

Put the plastic washer into a proper position on the base.(picture 1)
Choose the position of the base you want installed. Make sure there is enough space to spread display considering the show size. The desk should be between 15mm and 55mm thick and strong enough to bear the force caused by your display.

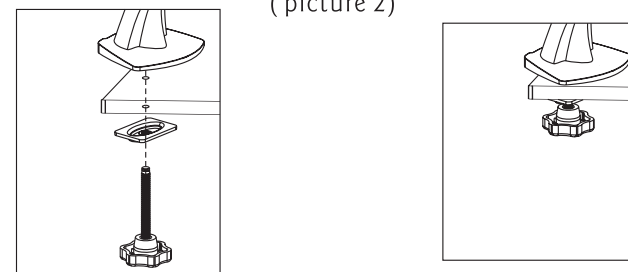
If the thickness of this desk is between 55mm and 80mm.(picture 2)
Put the clamp into a proper position, made the base above the middle of installation hole, make sure the clamp and the table is fully connected. and this position must be solid.(picture 3)



(picture 1)



(picture 2)



(picture 3)