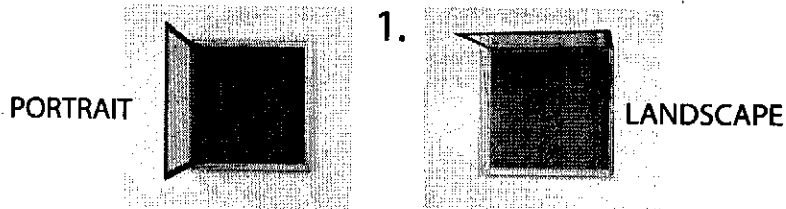
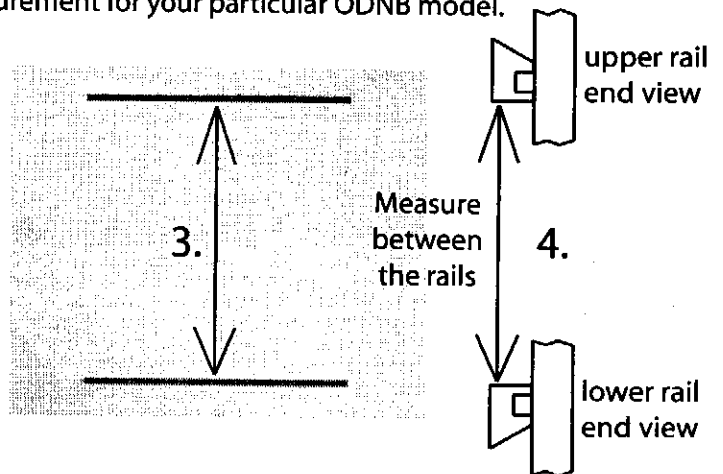


Mounting Instructions for: ODNBCB1319, ODNBCB4A4, ODNBCB6UP, ODNBCB9A4, ODNBCB12A4

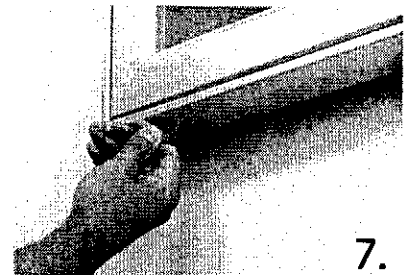
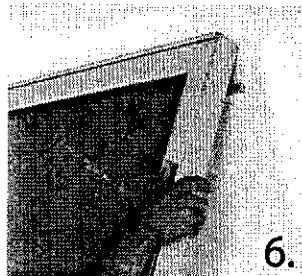
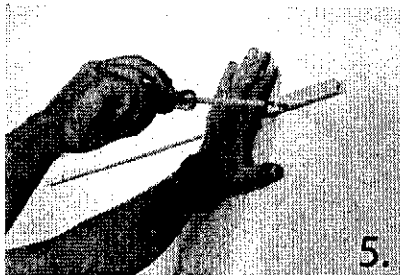


1. First, decide on which orientation you would like to install the unit.
2. Use the chart below to find the mounting rail measurement for your particular ODNB model.

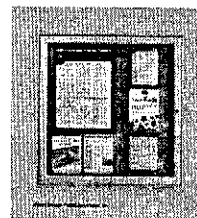
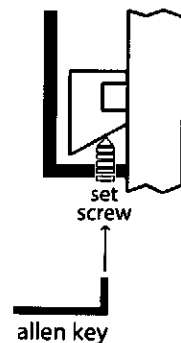
2.	PORTRAIT	LANDSCAPE
ODNBCB1319	22 7/8"	16 7/8"
ODNBCB4A4	28 1/4"	21 5/8"
ODNBCB6UP	30 3/4"	30 3/4"
ODNBCB9A4	40 7/8"	30 5/8"
ODNBCB12A4	40 7/8"	39 3/4"



3. The measurement you've chosen is the distance between the upper and lower mounting rails. (See fig. 3)
4. Make sure the mounting rails are in the correct position. (See fig. 4)



5. Mark and drill holes in wall. Insert wall anchors and attach the two mounting rails to wall with the included screws.
6. Place the ODNB centered over the top rail.
7. The set screws for the lower rail are already in the unit. You may have to move them depending on the hanging orientation you have chosen. Using the allen key, screw the set screws until they engage the lower mounting rail. The ODNB unit is now secured to the wall.



8. Attach your notices or memos with the included set of pushpins. Close and lock the door. You're done!