



EN  Read the entire instruction manual before you start installation and assembly. If you have any questions regarding any of the instructions or warnings, please contact your local distributor for assistance.

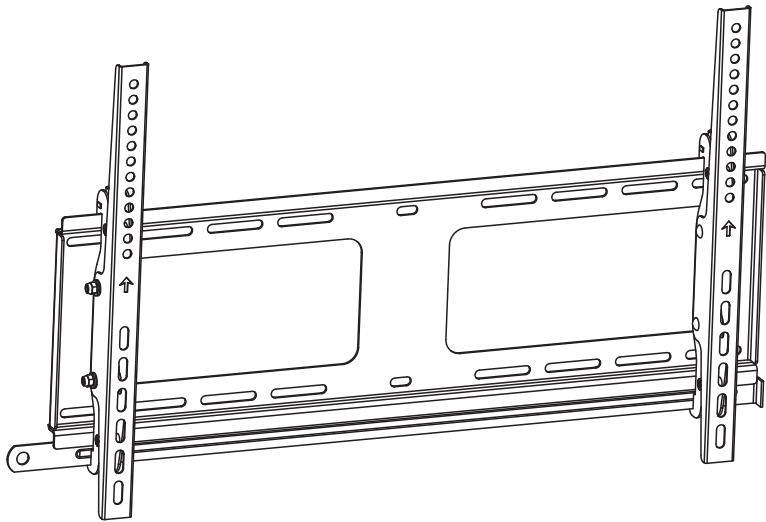
 **CAUTION:** Use with products heavier than the rated weights indicated may result in instability causing possible injury.

- Mounts must be attached as specified in assembly instructions. Improper installation may result in damage or serious personal injury.
- Safety gear and proper tools must be used. This product should only be installed by professionals.
- This product is designed to be installed on wood stud walls, solid concrete walls or brick walls.
- Make sure that the supporting surface will safely support the combined weight of the equipment and all attached hardware and components.
- Use the mounting screws provided and DO NOT OVER TIGHTEN mounting screws.
- This product contains small items that could be a choking hazard if swallowed. Keep these items away from children.

IMPORTANT: Ensure that you have received all parts according to the component checklist prior to installation. If any parts are missing or faulty, telephone your local distributor for a replacement.

MAINTENANCE: Check that the bracket is secure and safe to use at regular intervals (at least every three months).


Outdoor Tilt TV Wall Mount



OUTTVTILT80



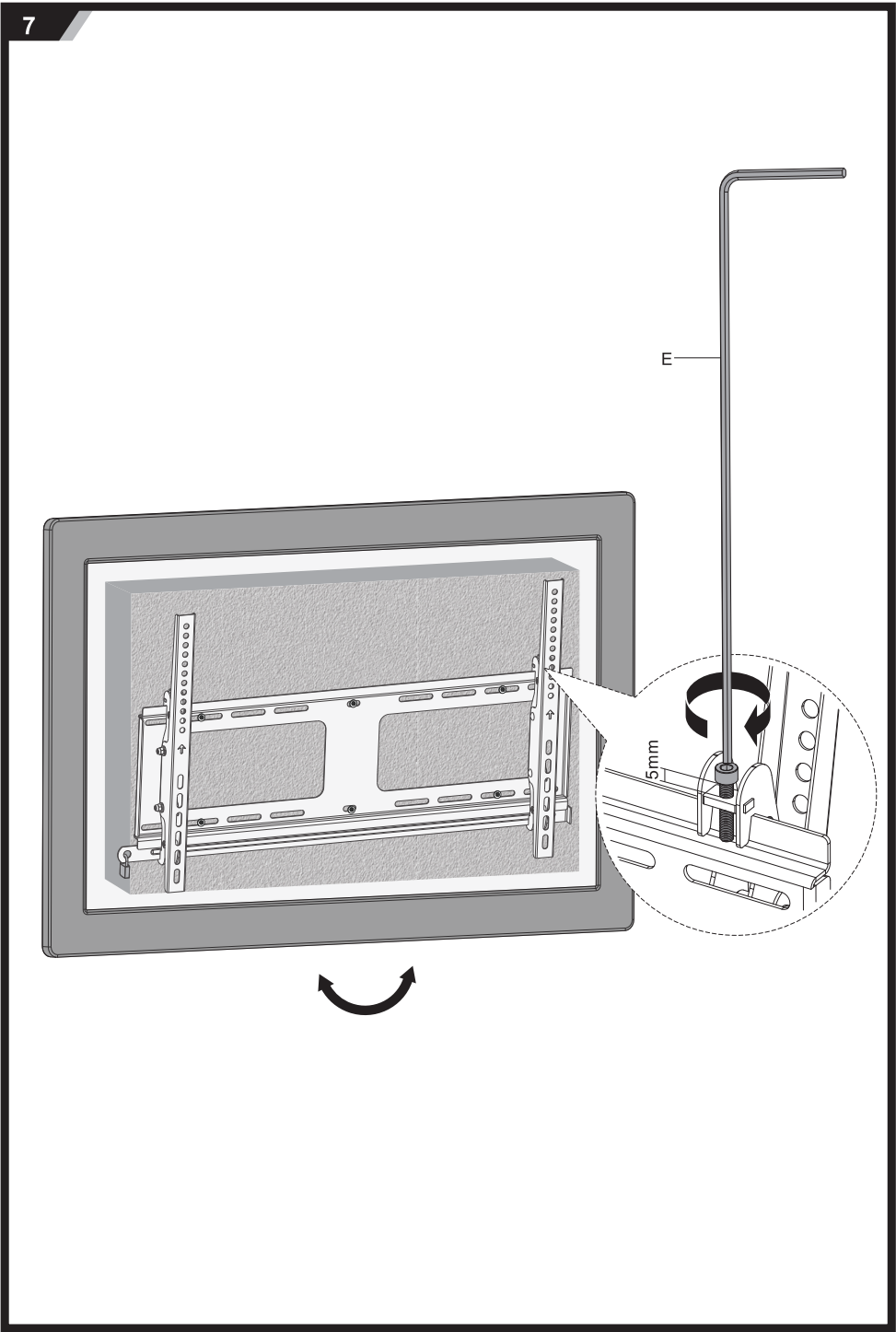
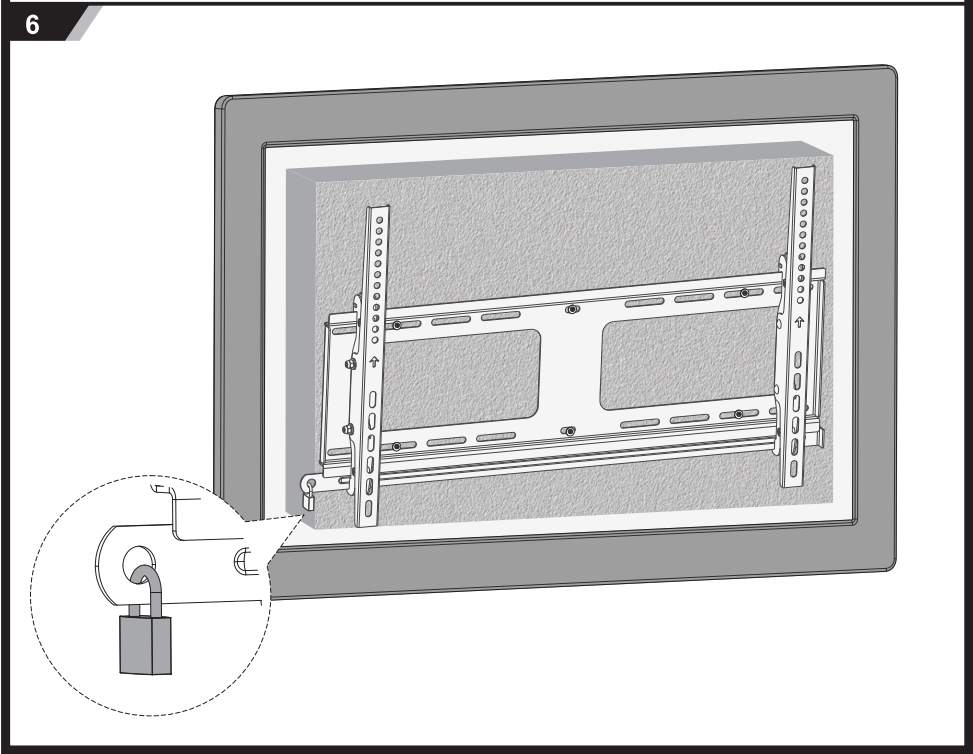
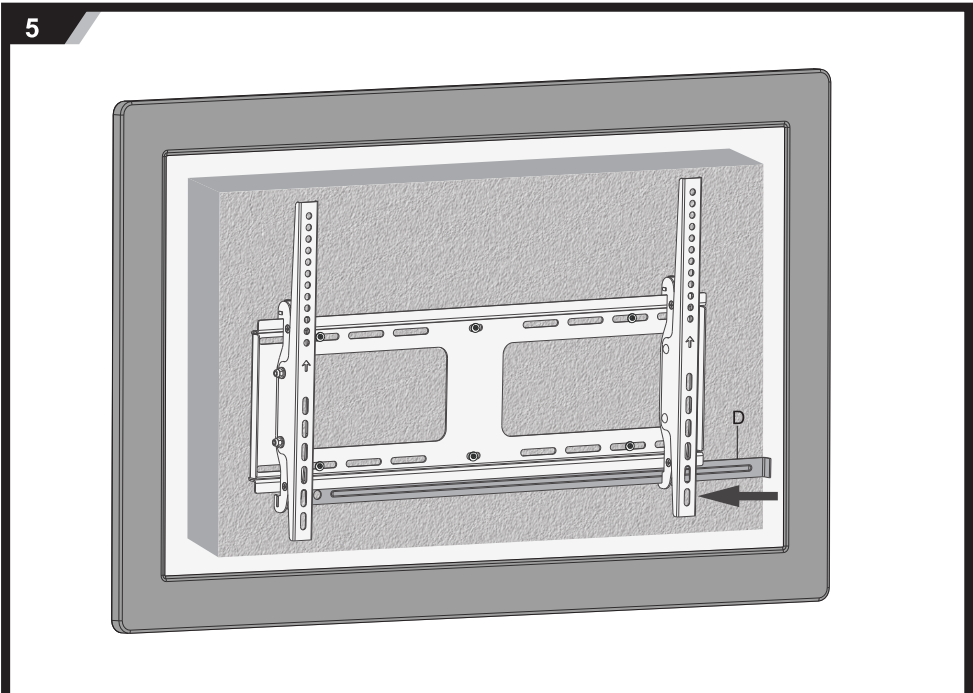
200x200/300x200/300x300
400x200/400x300
400x400/600x400



80"
MAX



80kg
(176lbs)
RATED



M5x14 (x4)
M-A

M6x14 (x4)
M-B

M6x30 (x4)
M-C

M8x30 (x4)
M-D

M8x50 (x4)
M-E

D6 (x4)
M-F

D8 (x4)
M-G

M-H (x8)

M-I (x8)

W-A (x6)

W-B (x6)

W-C (x6)

1a

1b

2a

2b

3

2

4