



Compact Bar Set Up Guide

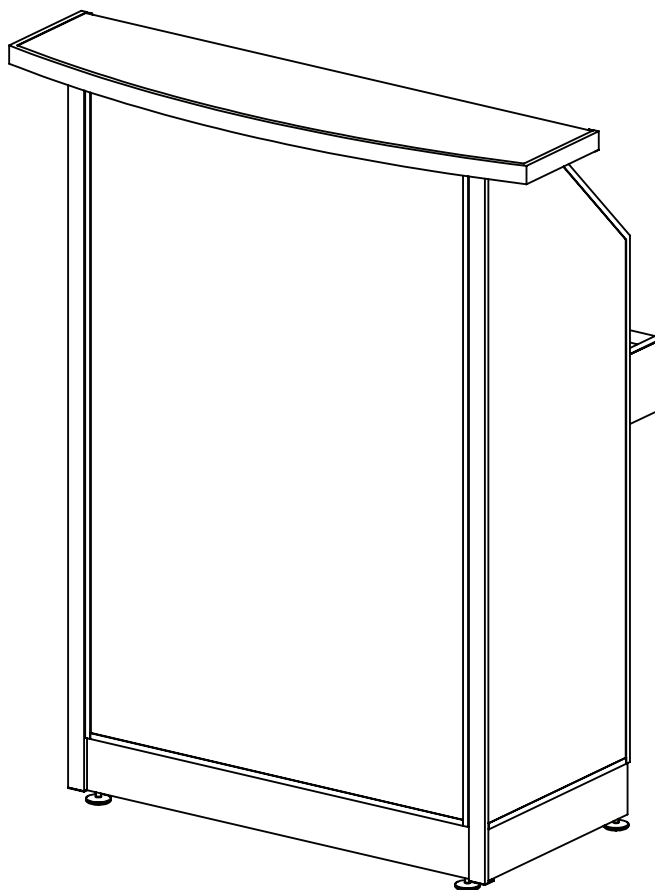
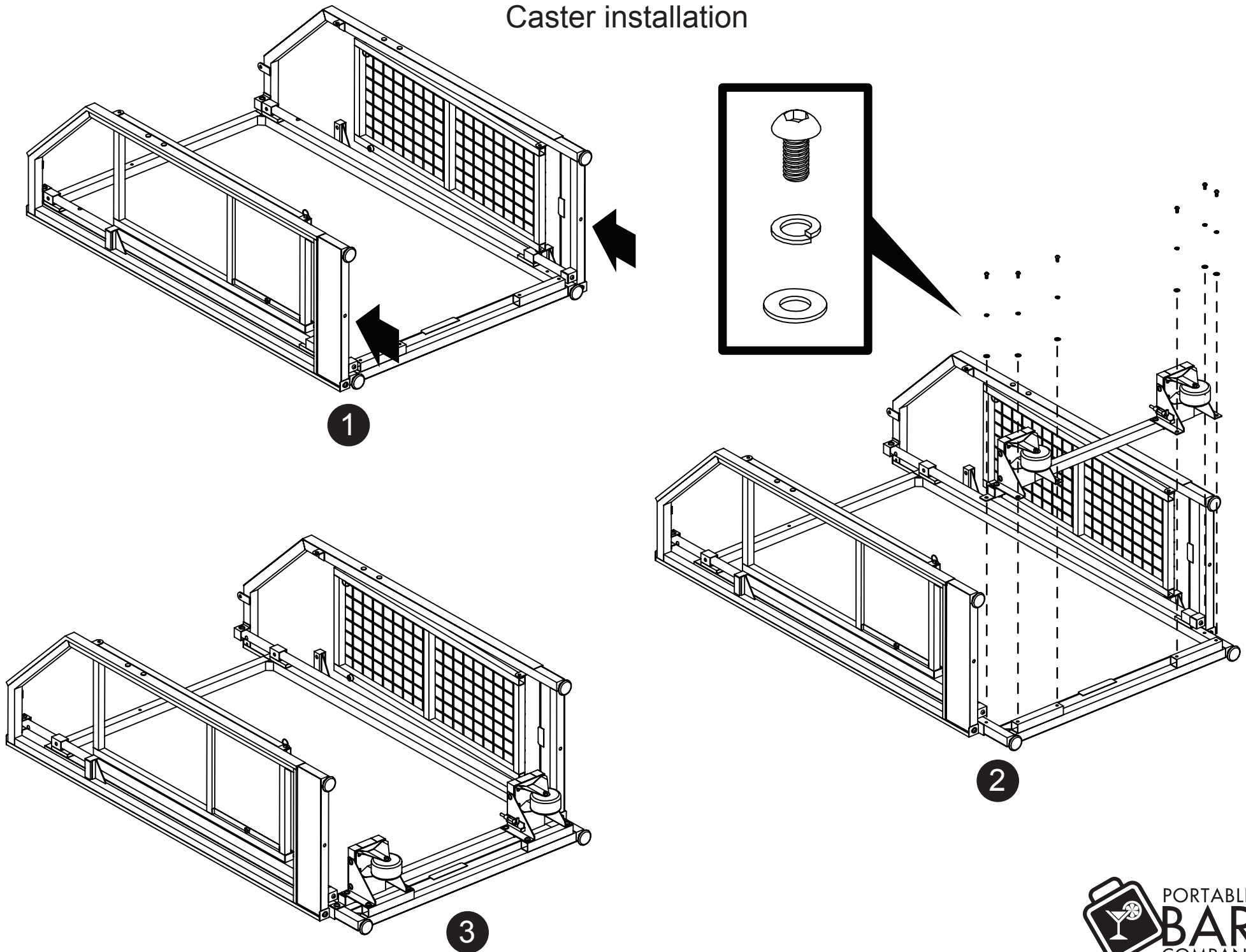


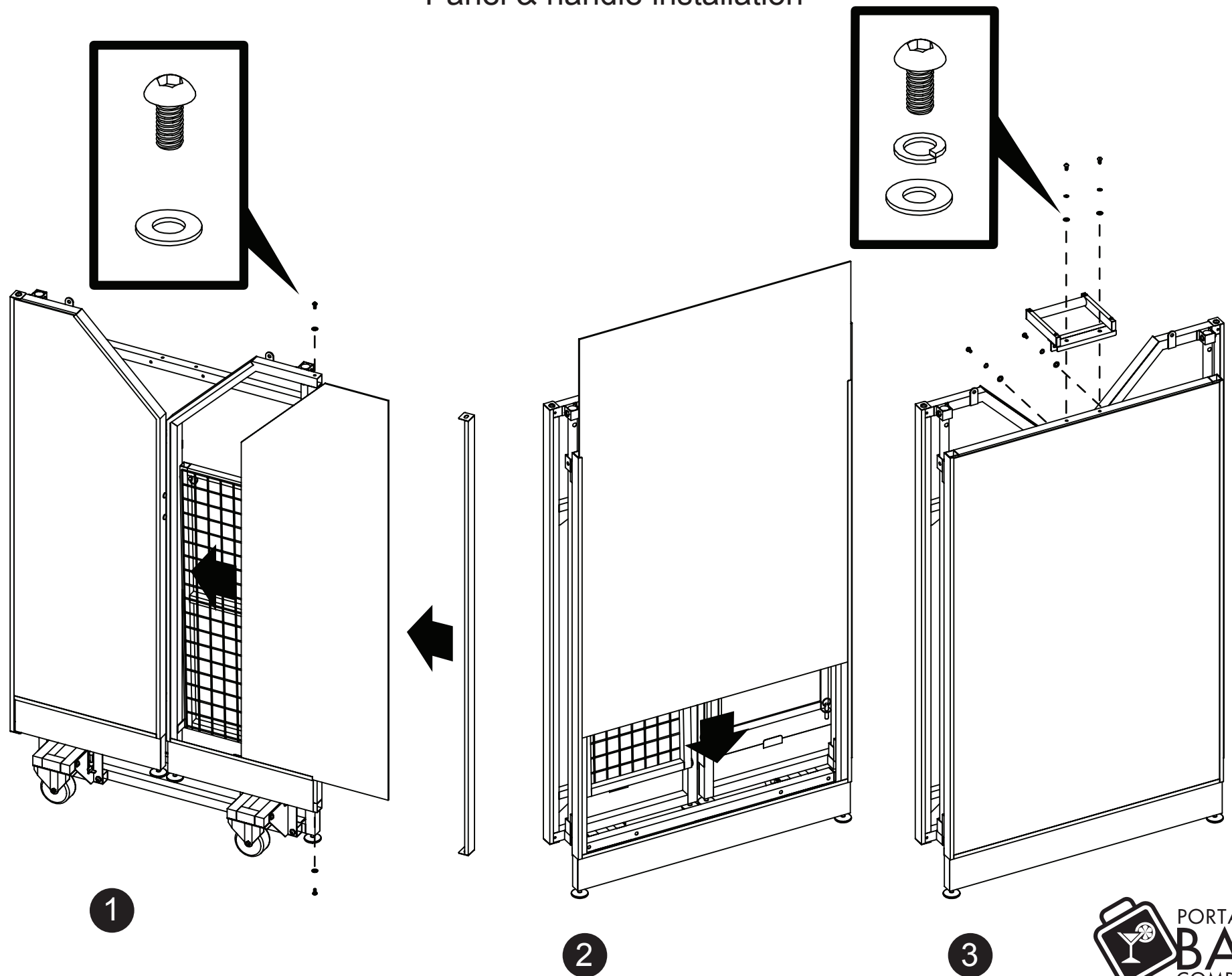
Table of Contents

- Caster installation
- Panel installation
- Set up steps
- Compact bar covers

Caster installation

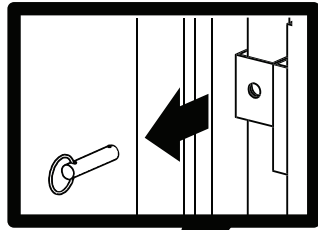


Panel & handle installation

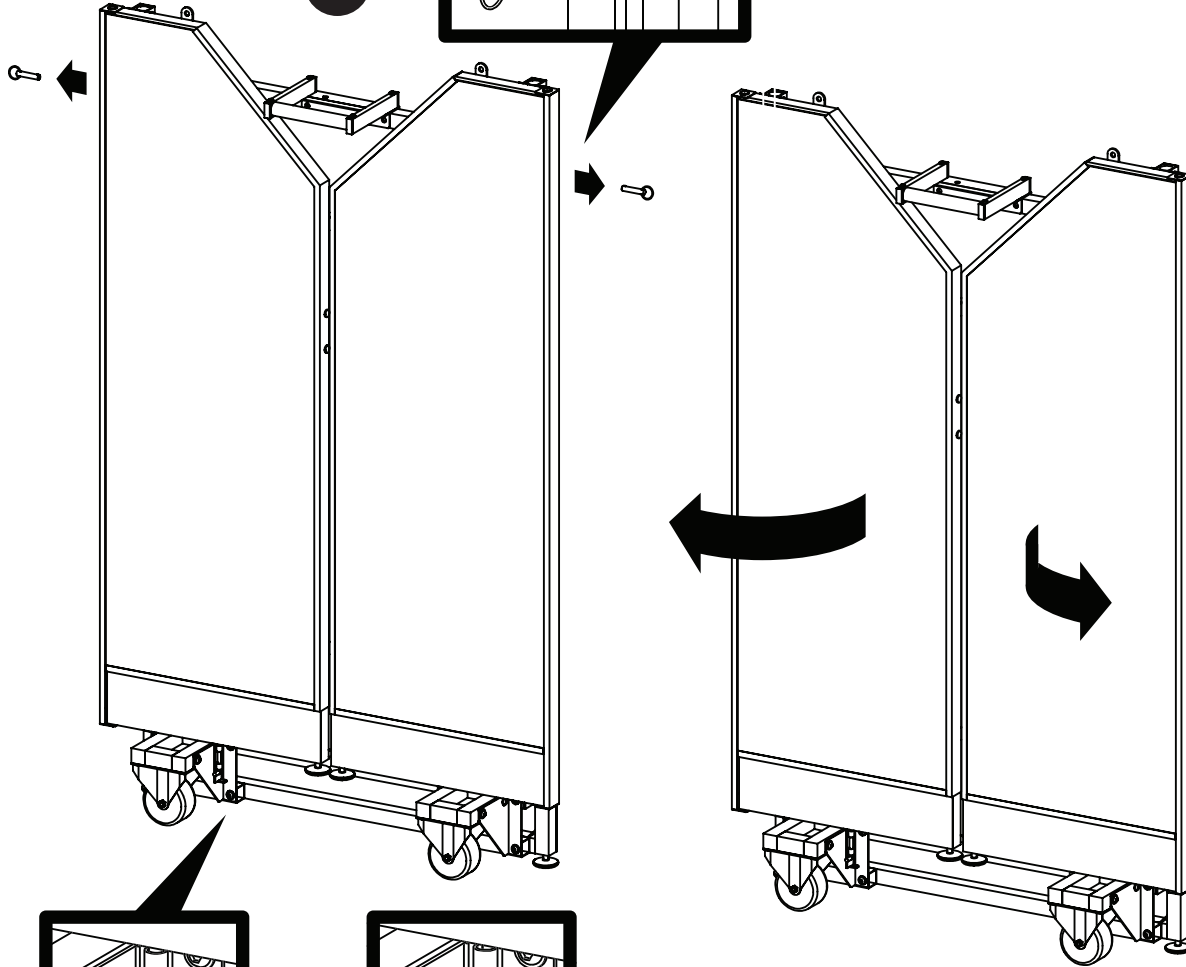


Set up steps

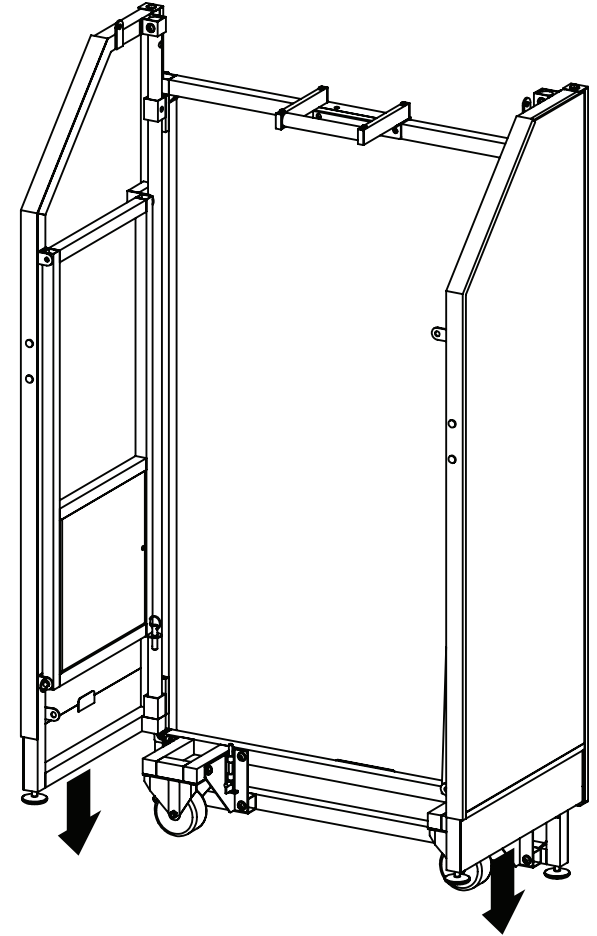
Remove pins.



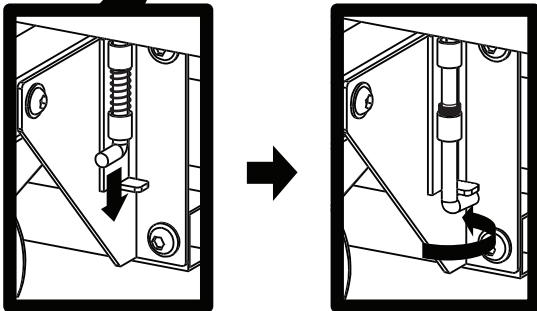
1



2



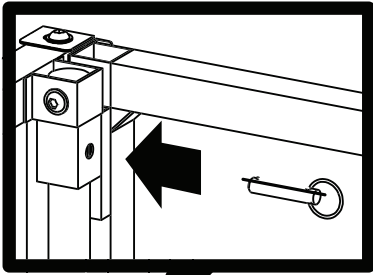
3



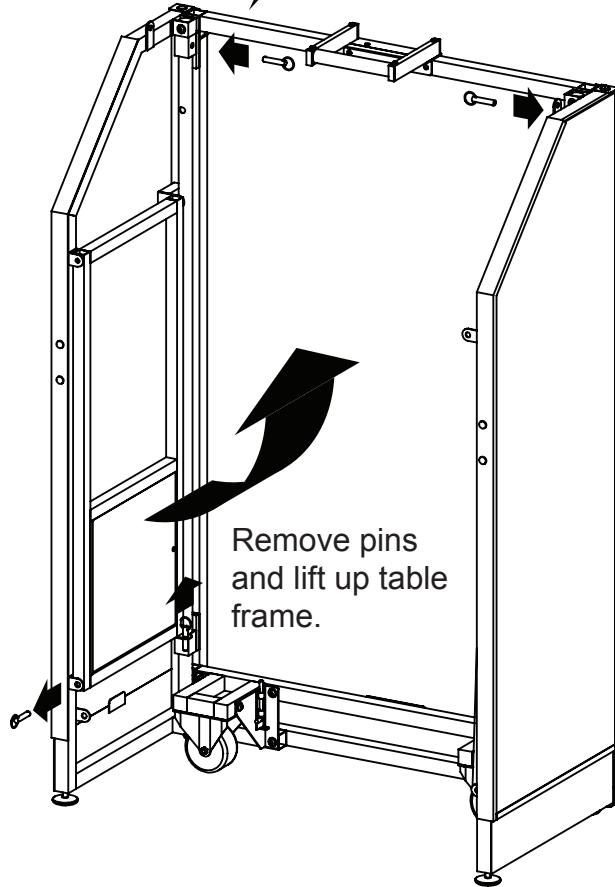
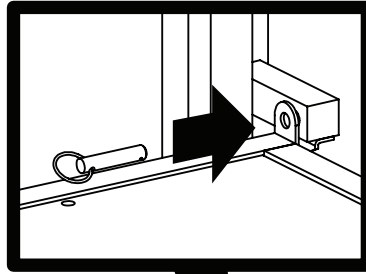
Unlock spring latches.

Set up steps

Insert pins
from step 1

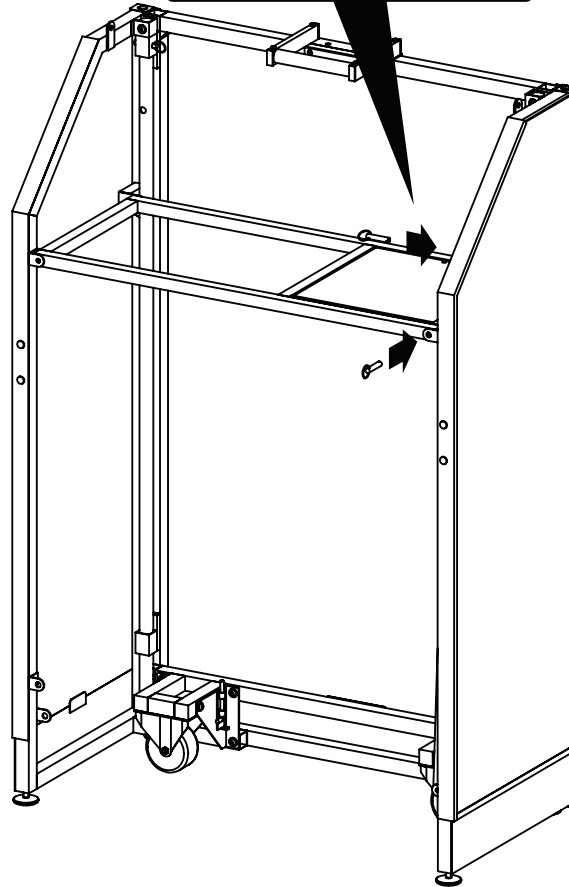


Lock table frame
into place with
pins from step 4.

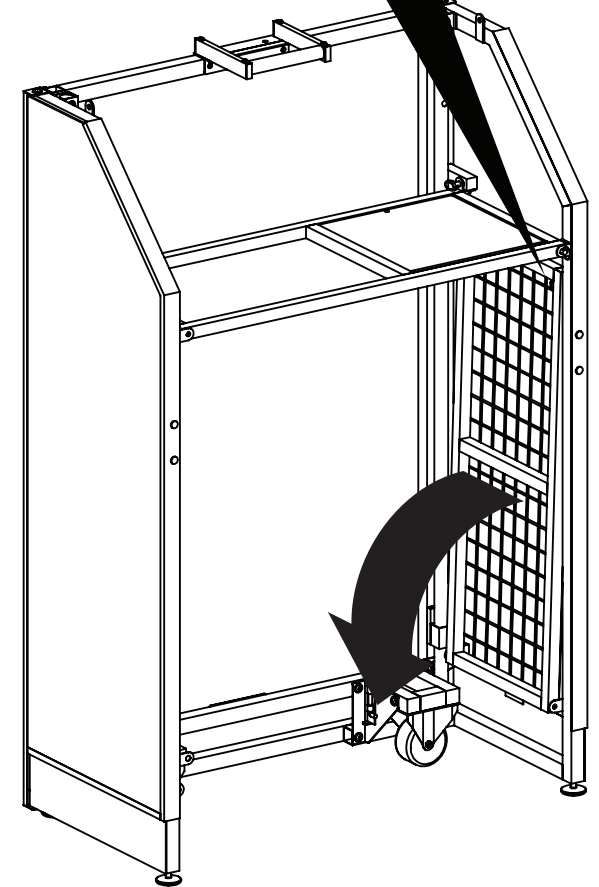


Remove pins
and lift up table
frame.

4

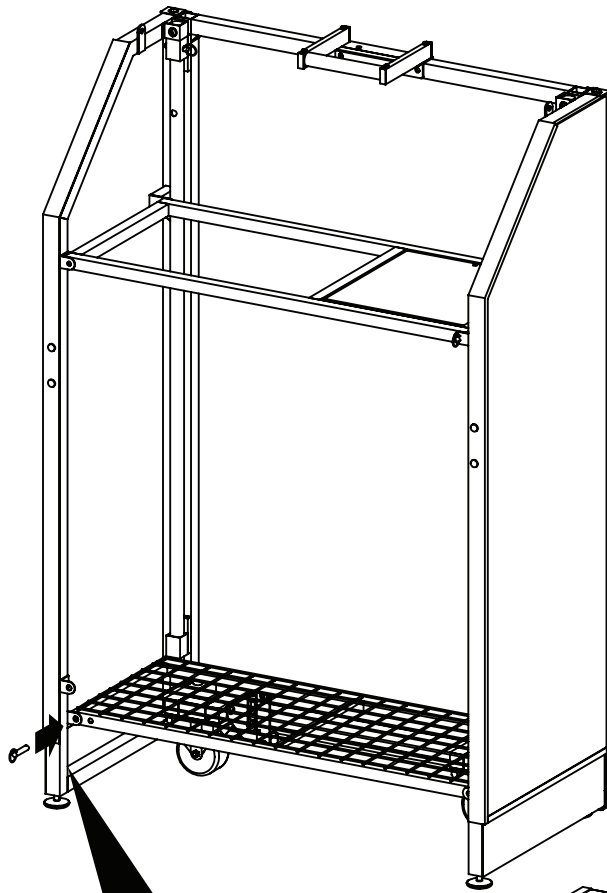


5



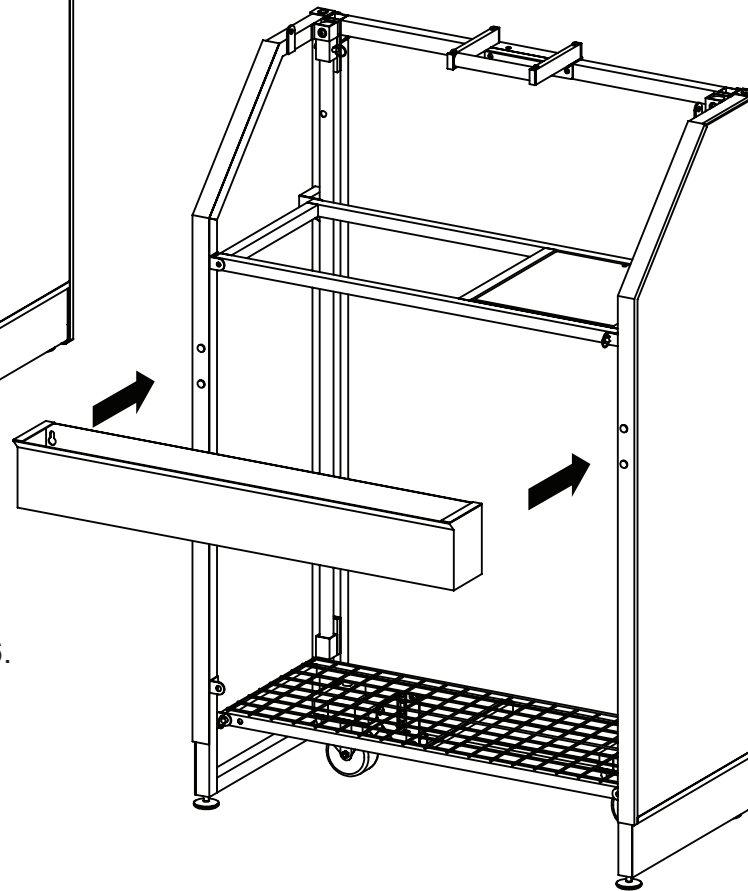
6

Set up steps

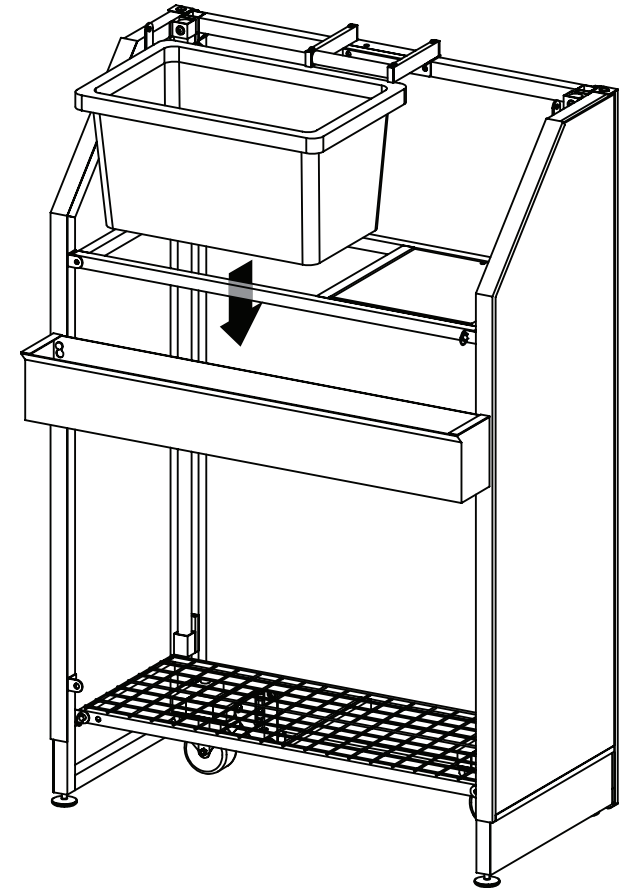


Insert pin
from step 6.

7

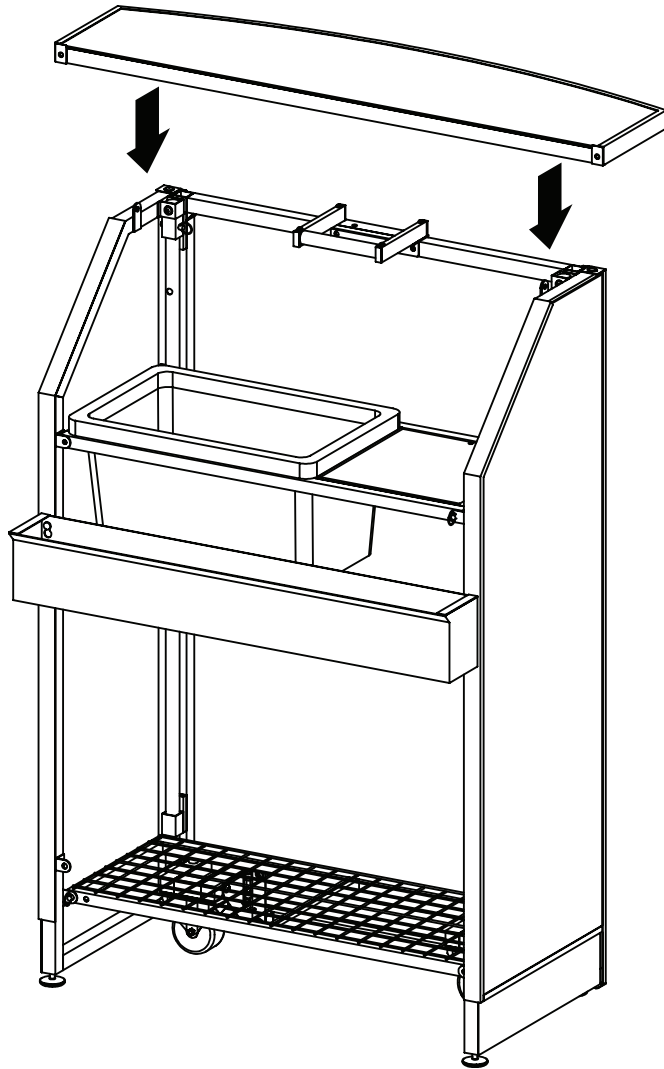


8

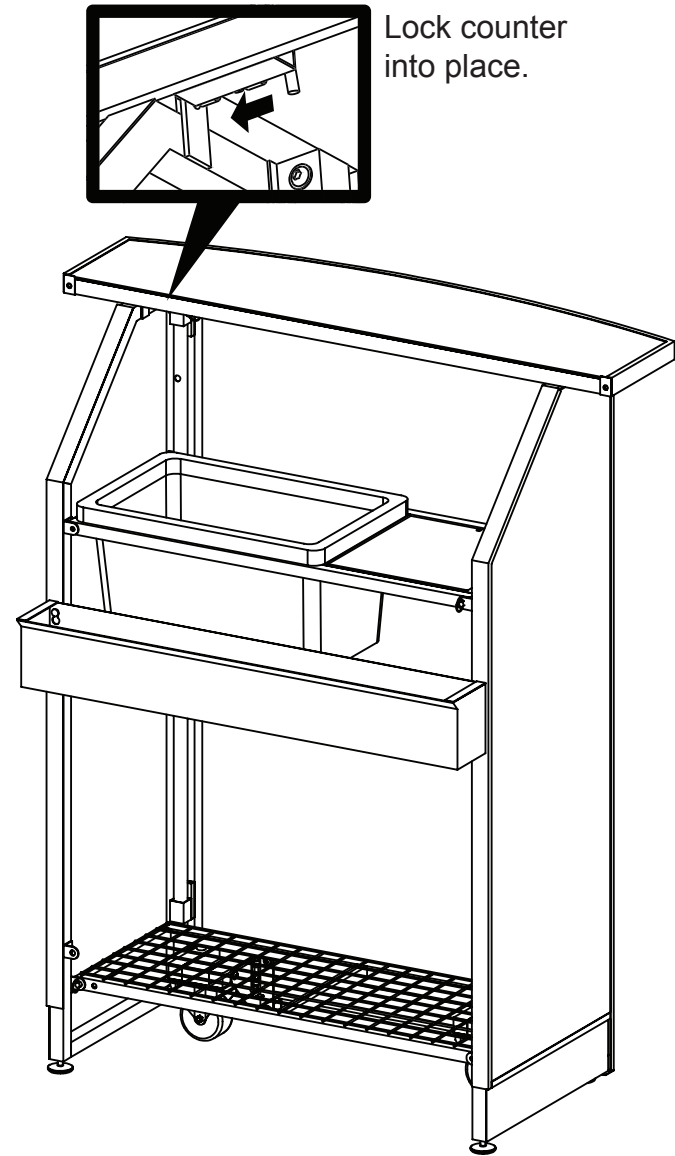


9

Set up steps



10



11

Compact bar covers

