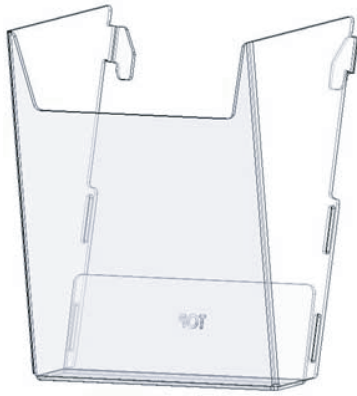
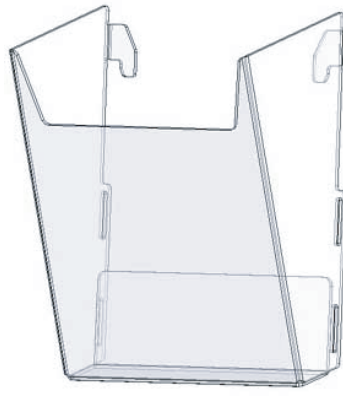


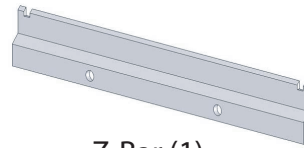
RM9



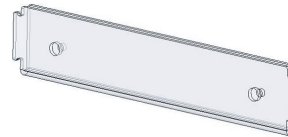
Top Pocket (1)



Lower Pockets (4)



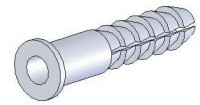
Z-Bar (1)



Lower stabilizer (1)

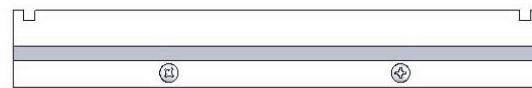


Screw (4)



Drywall Anchor (4)

1. Place z-bar in desired location on a wall and mark the holes using a pencil. Remove z-bar and drill two 7/32 holes. Insert anchors and attach z-bar with screws.



2. Take the pocket labeled "TOP" insert tabs into z-bar secured to the notches on the z-bar.



3. Attach following pockets by flexing sides of the pocket and insert tabs into slots on top pocket. Choose slots for full version or half version, repeat for remaining pockets.

4. After installing last pocket, make two marks on the wall at the bottom of slots (see images below), remove last pocket, align stabilizer to marks, and mark the holes on the wall. Drill 7/32" holes, install stabilizer using provided anchors and screws. Reinstall last pocket and attach tabs to the catches on the lower stabilizer.

