

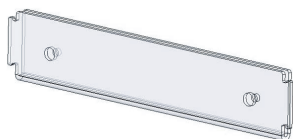
Pocket (4)



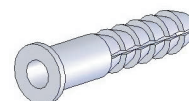
Plate (1)



Screw (4)

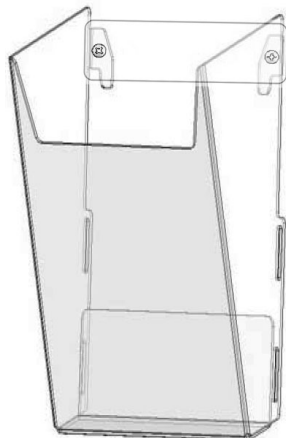


Lower stabilizer* (1)



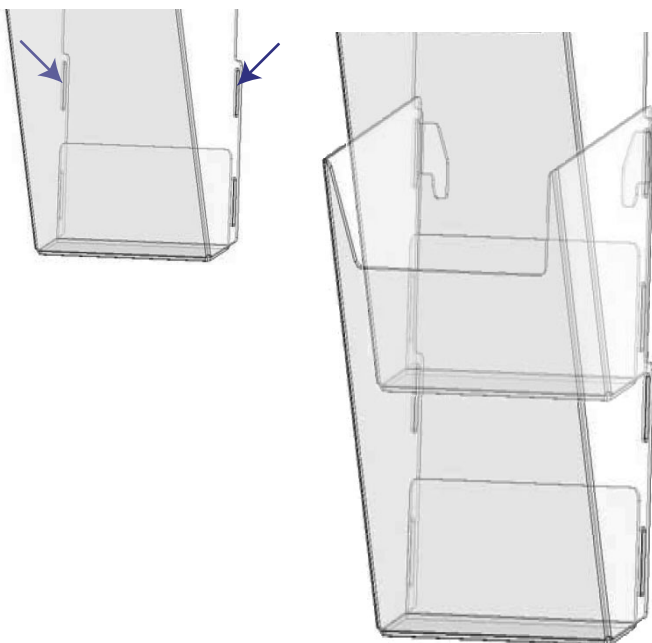
Drywall Anchor (4)

1. Place the plate in desired location on a wall and mark the holes using a pencil. Remove the plate and drill two 7/32" holes. Insert anchors and attach the plate and one pocket with screws.

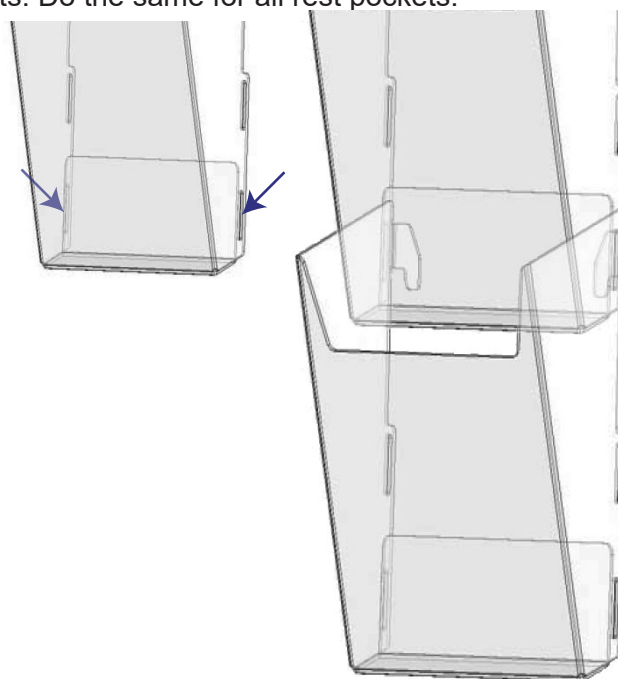


2. Attach following pockets by flexing sides of the pocket and insert tabs into slots on top pocket.

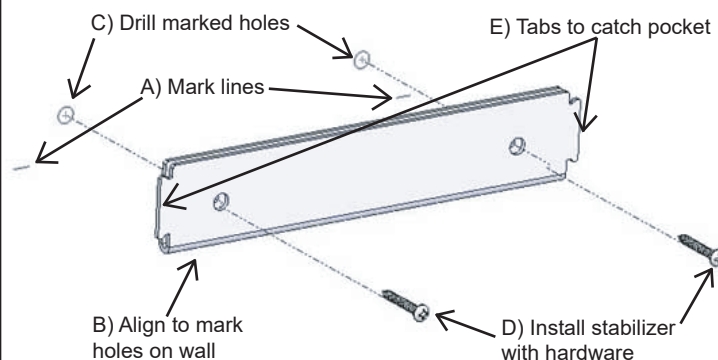
a). To get half view display, attach inserts into the upper slots. Do the same for all rest pockets.



b). To get full view display, attach inserts into the lower slots. Do the same for all rest pockets.



4. After installing last pocket, make two line marks on the wall at the bottom of slots (see images below), then remove last pocket. Align stabilizer to marks and mark the holes on the wall. Drill two 7/32" holes, install stabilizer using anchors and screws provided. Reinstall last pocket and attach tabs into the slots on the last pocket.



*Lower stabilizer is only necessary if hanging all pockets together vertically.