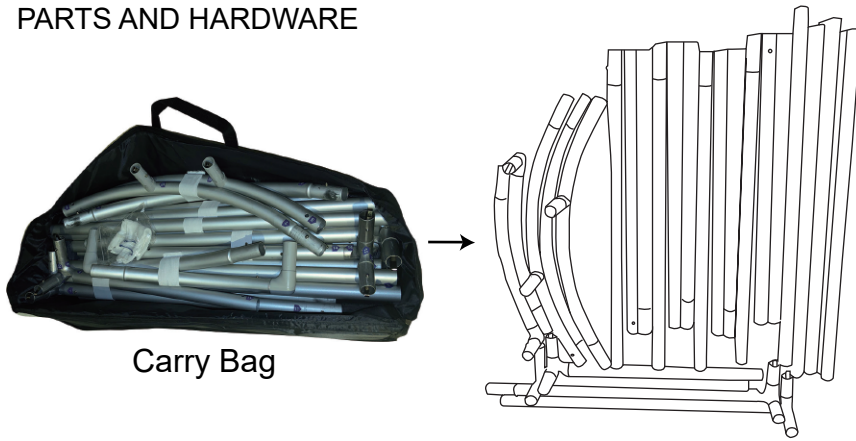


ASSEMBLY INSTRUCTIONS - SMSDRF - Floor Standing Dressing Room

Ver. 04/20

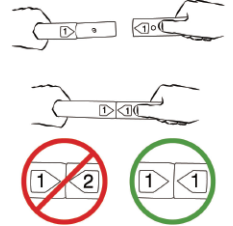
PARTS AND HARDWARE



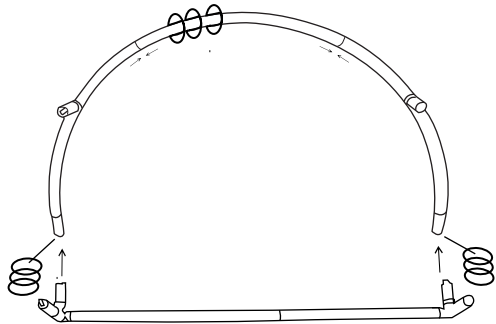
CAUTION: Before starting the assembly, wear gloves to protect your hands.



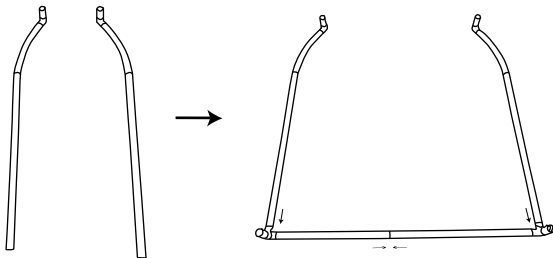
Connect tubes by matching the numbers on the ends.



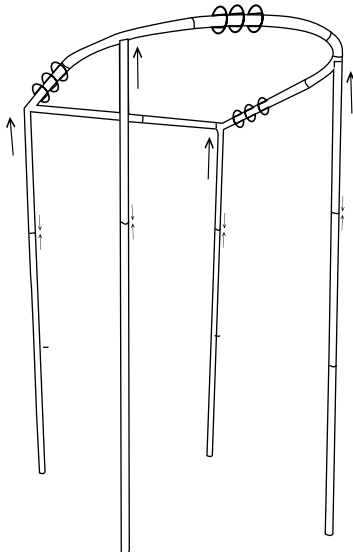
1. If using curtain hooks (not supplied), slide appropriate quantity onto the tubes as shown below. Connect tubes with matching labels to make the frame top.



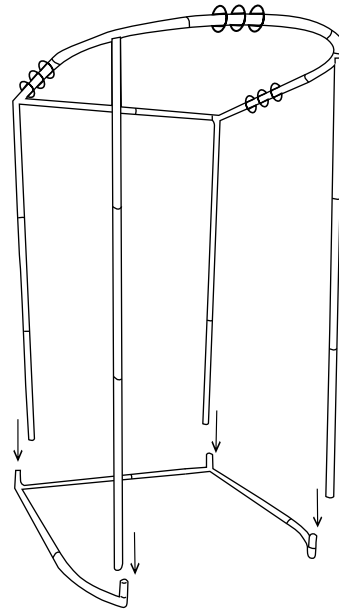
2. Snap and connect the tubes to assemble the bottom the same way.



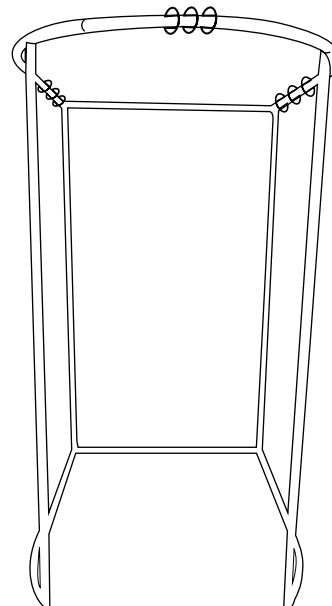
3. Snap and connect 4 supporting tubes with the top frame by matching the numbers on the tubes.



4. Connect the assembled frame with the base assembly as shown below.



5. The assembly is finished.



Scan QR code to visit the product page:



If you have any questions regarding our products, please visit us at www.displays2go.com or contact D2G customer service at 844-221-3388.

DISPLAYS2GO