

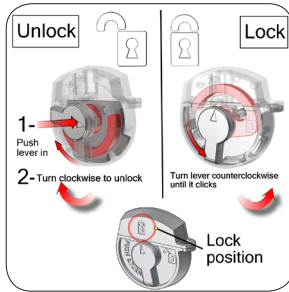
OCX

OCX

It's critical to protect your tradeshow exhibit investment with a quality constructed transit and shipping case. Designed to house specific lines of exhibits and displays for maximum portability and strong, yet lightweight. This black roto-molded case is ideal for exhibits, graphics and accessories.



Push & turn locking mechanism



Lock instructions



Recessed wheels and handle



Foam padding for lights



features and benefits:

- Black roto-molded case
- Ideal for exhibits, graphics & accessories
- Premium latches for maximum strength
- Light storage in the lid
- Built-in wheels and molded handle for maximum portability
- Made from recyclable materials
- Made in the USA
- Stretch wrap, roll wrap and fabric wrap available for case to counter conversion (MDF tabletop optional)
- One year limited warranty against manufacturer defects

dimensions:

Hardware

Interior:
35.75" w x 23.5" h x 13" d
908mm(w) x 597mm(h) x 330mm(d)

Exterior:
39.5" w x 26.75" h x 17" d
1003mm(w) x 680mm(h) x 432mm(d)

Weight (when empty):
32 lbs / 14.5 kgs

Shipping

Shipping Dimensions
(can ship FedEx or UPS):
40" w x 27" h x 17.5" d
1016mm(w) x 686mm(h) x 445mm(d)

additional information:

Optional MDF tabletop available in 4 colors for a premium case to counter conversion look.



MDF tabletop

Tabletop finishes:



silver black mahogany natural

We are continually improving and modifying our product range and reserve the right to vary the specifications without prior notice. All dimensions and weights quoted are approximate and we accept no responsibility for variance. E&OE. See Graphic Templates for graphic bleed specifications.