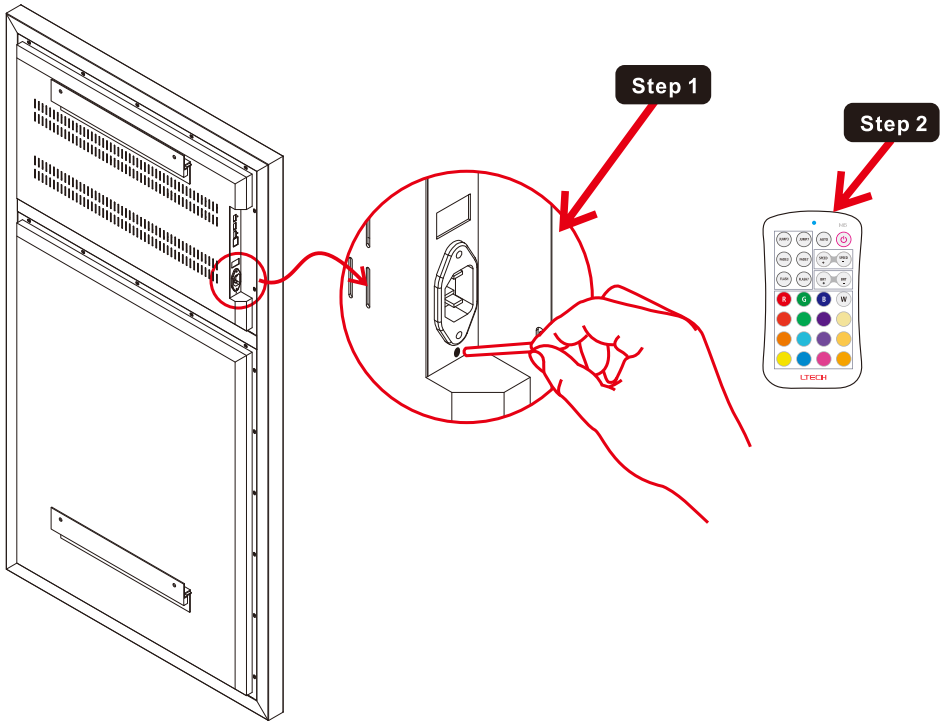


Troubleshooting of the LED Remote Control



NOTE: The remote control has been paired with the product before shipping.

Please refer the solution below if the remote control doesn't work properly.

Make sure the battery is inserted properly and the unit is powered on.	
Issue	Solution
<ul style="list-style-type: none">● The remote control is not working	<p>Step 1 Use a tiny pin that can fit into the hole as shown in the detailed view above. Press and hold ID button to reset the device.</p> <p>Step 2 Press any key on the remote.</p>