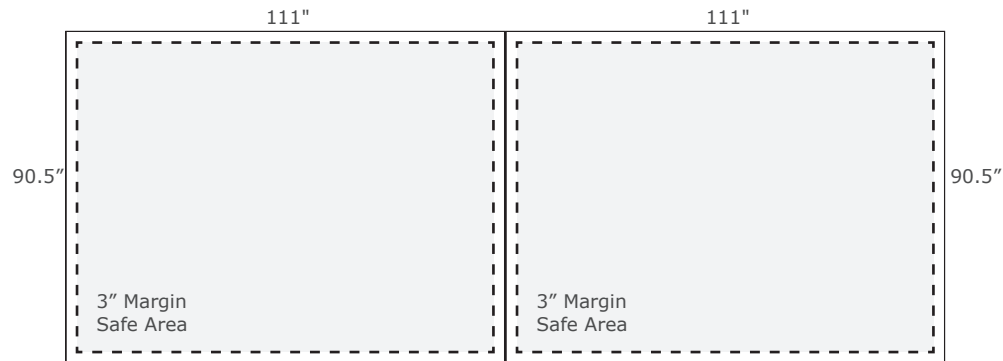


SPECIFICATIONS FOR SUPPLYING PRINT READY ARTWORK



20FT BACKLIT LED LIGHTBOX

Display consists of (2) 10' units.

If art is different for each 10' panel please supply two separate art files

Total Graphic Area: 111" x 90.5" (per unit)

Total Safe Area: 105" x 84.5" (per unit)

Please include a 3" margin on all four edges where no text, logos, etc. are placed.

(For Reference Only)

FILE FORMATS

.JPG or .PDF

(.ai, .psd, .eps, .tiff)

ART GUIDELINES

- Files must be CMYK
- All Fonts must be created to Outlines or Supplied with your artwork
- Embed all images and support files
- Resolution must be 150 ppi at full size
- Please view your artwork at full size
- Background color / Image must extend to the edge of the artboard
- Make sure to turn off or delete all other layers on finished artwork before sending and make sure artwork is a flatten file (if using Photoshop).

TRANSMITTING FILES

ONLINE: <https://www.trtbanners.com/uploadartwork>

EMAIL: sales@trtbanners.com