

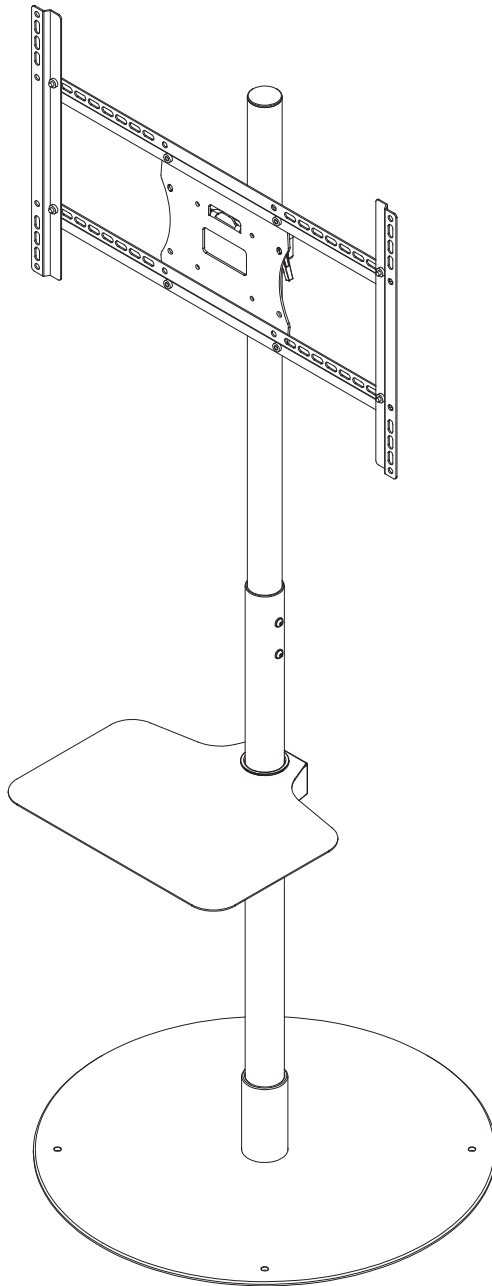
INSTALLATION GUIDE

TV Stand Mount

TVSDP4060B

Max Load Capacity: 100 lbs (45 kg)

VESA 100x100~600x400 compatible



User's Manual

⚠ WARNING

- Be sure to read this entire manual thoroughly and you fully understand all the instructions and warning before attempting to begin your installation.
- This product should only be installed by someone who has a basic knowledge of building construction, installations and fully understands these instructions.
- Always have someone assist you to lift and position your equipment.
- Tighten screws and bolts firmly, but do not over tighten. Over tightening can damage the items and greatly reduce their ability to hold. Please refer to suggested torque values where applicable in these instructions.

Tools Needed for Assembly

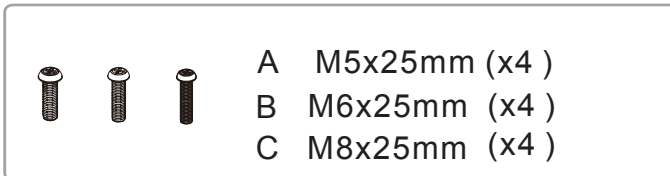
- level
- phillips screwdriver

Table of Contents

- | | |
|--|---|
| <p>① Install the Rubber pad onto base floor (CC)</p> <p>② Install the first pipe (EE) onto base floor (CC)</p> <p>③ Mount the AV tray (BB) onto the first pipe (EE)</p> <p>④ Mount the second pipe (DD)</p> <p>⑤ Mount the head assembly (AA) onto second pipe</p> | <p>⑥ Mounting the Assemble the Adaptor Plate to screen</p> <p>⑦ Mount display (FF)</p> <p>⑧ Adjust angle</p> <p>⑨ Using cable management</p> <p>⑩ Fix the stand to the floor (optional)</p> |
|--|---|

A. Installation hardware kits

1. For TV's



- | | | |
|---|--|------------------------------|
| D | | φ 13x13x φ 8.2(x4) Spacer |
| E | | φ13x5x φ 8.2(x4) Spacer |
| F | | Metal washer diameter 6 (x4) |

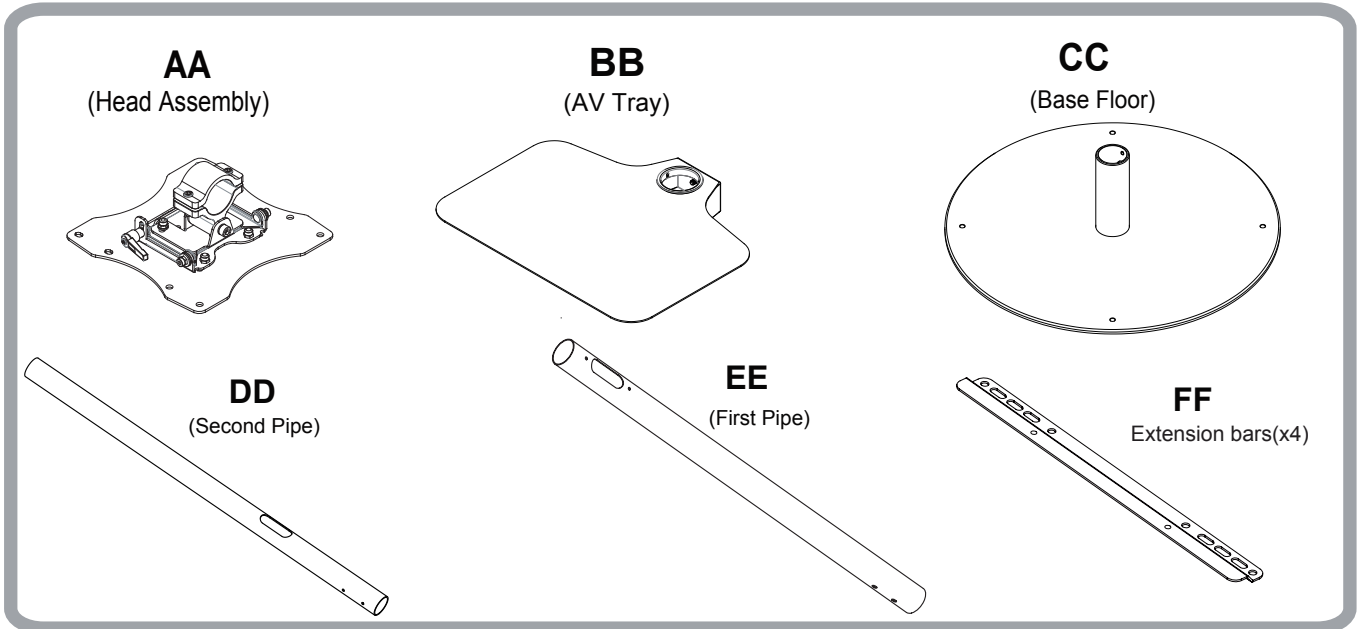
2. For installing the stand cart

- | | | | | |
|---|--|------------------------------------|--|--------------------|
| G | | Metal washer diameter 6 (x12) | | Open wrench (x1) |
| H | | Socket pan head screw M6*12mm (x6) | | 3mm Allen Key (x1) |
| I | | Cross head screw M6*12mm (x8) | | 4mm Allen Key (x1) |
| | | | | 5mm Allen Key (x1) |

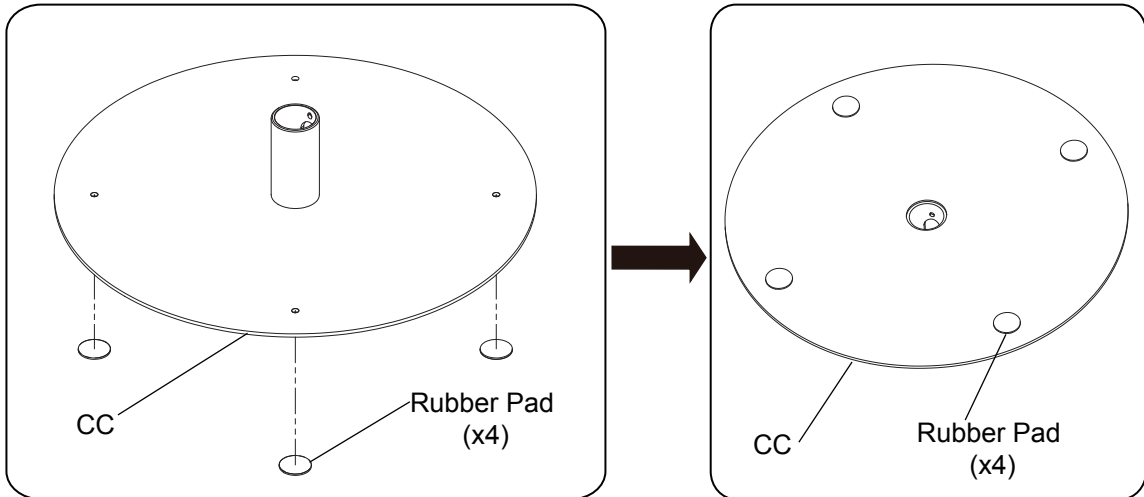
3. For installing the stand cart

- | | | |
|------------|---------------------|----------------|
| Anchor(x4) | Lag Bolt 8X70mm(x4) | Rubber Pad(x4) |
|------------|---------------------|----------------|

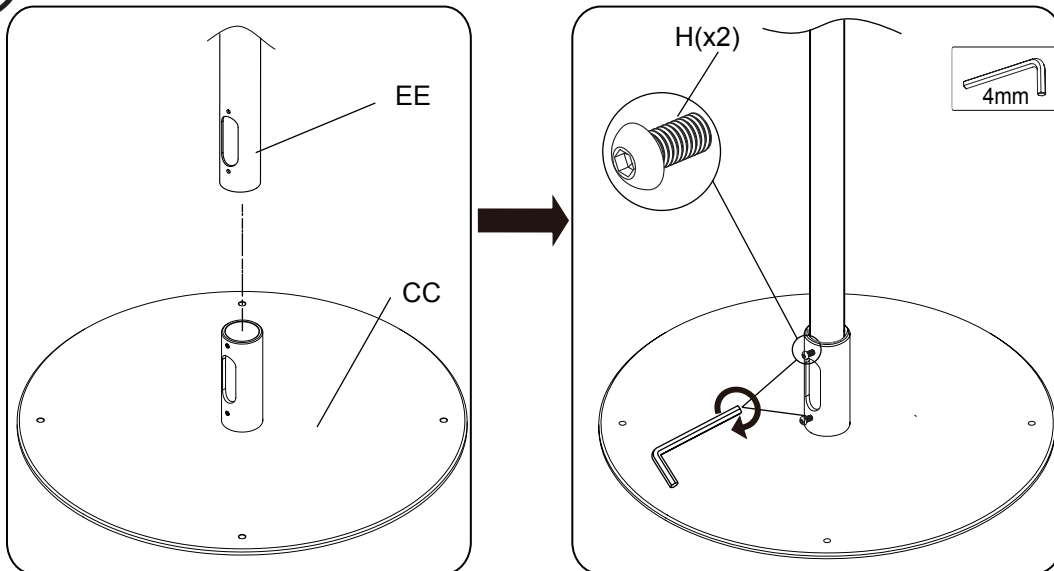
B. Component checklist



1 Install the rubber pad onto base floor (CC)

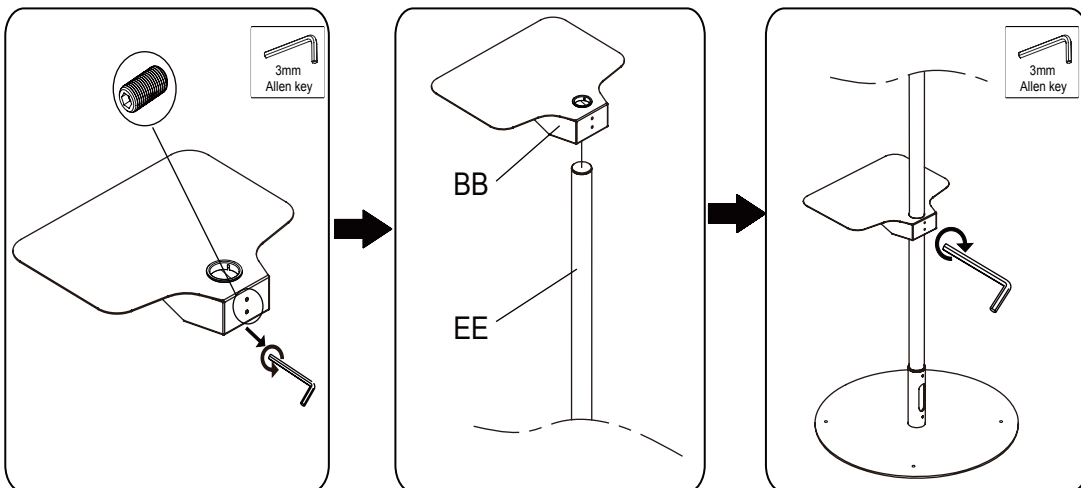


2 Install the first pipe (EE) onto base floor (CC)



3

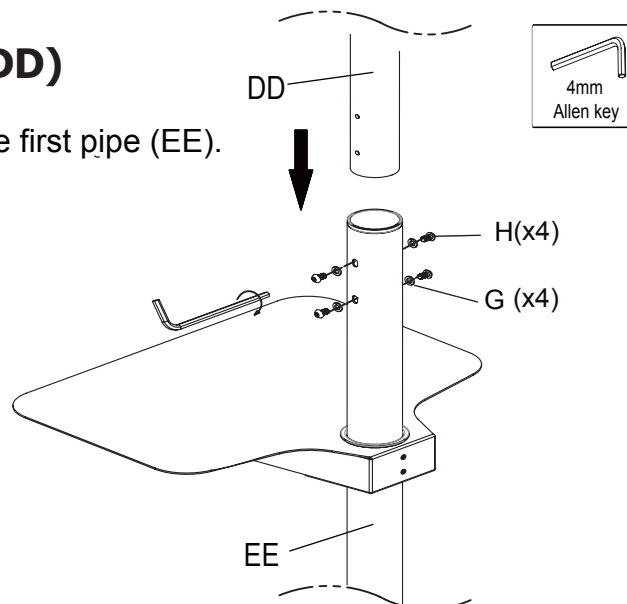
Mount the AV tray (BB) onto the first Pipe (EE)



4

Mount the Second Pipe (DD)

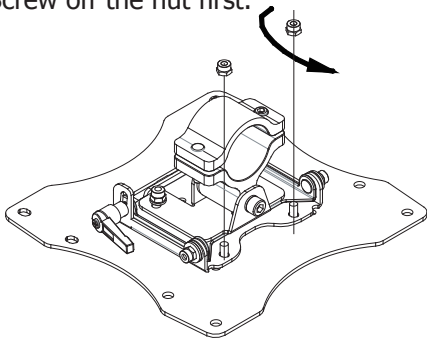
Mount the second pipe (DD) onto the first pipe (EE).



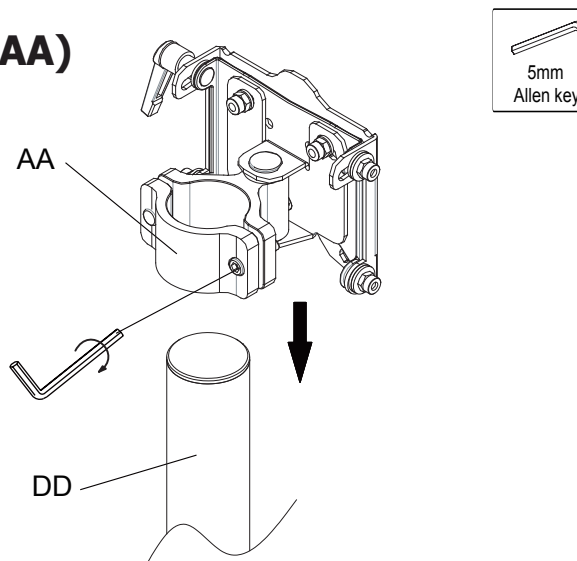
5

Mount the Head Assembly (AA) onto second pipe (DD)

1) Screw off the nut first.

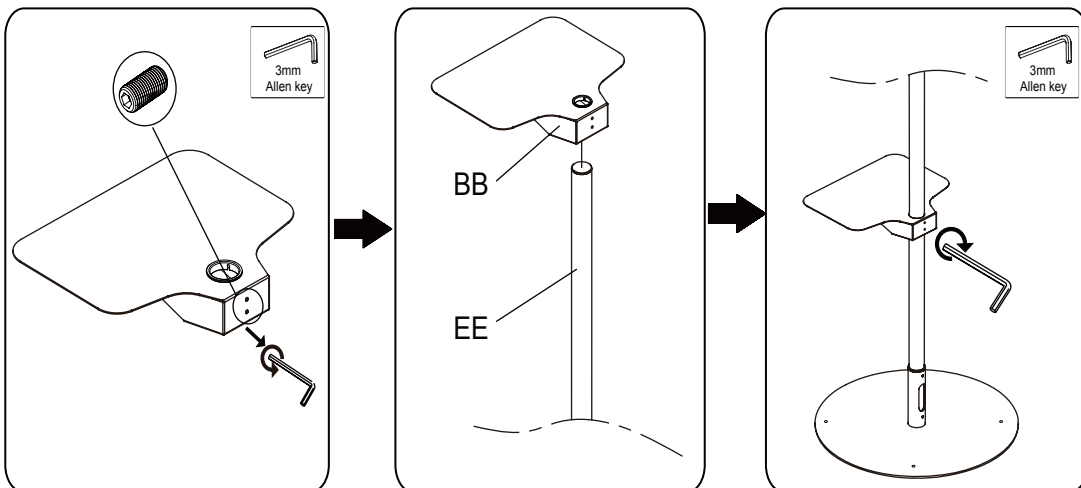


2)



3

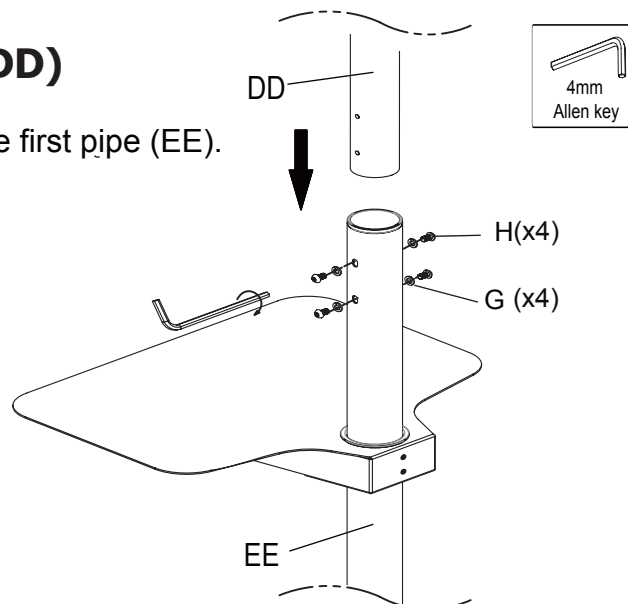
Mount the AV tray (BB) onto the first Pipe (EE)



4

Mount the Second Pipe (DD)

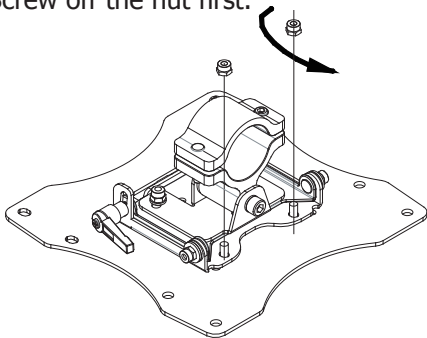
Mount the second pipe (DD) onto the first pipe (EE).



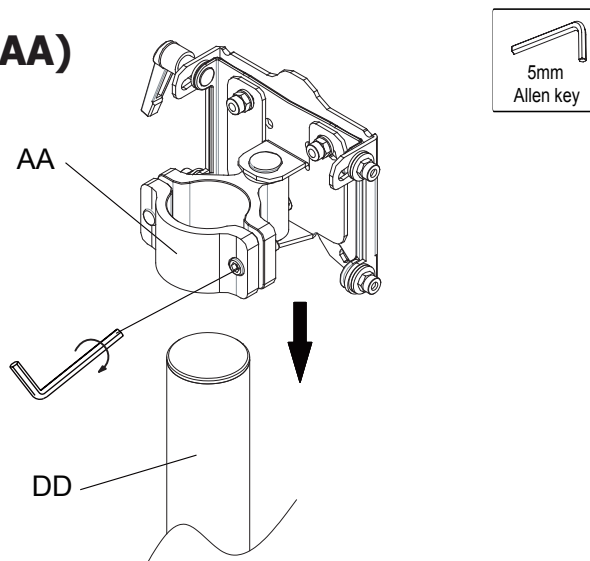
5

Mount the Head Assembly (AA) onto second pipe (DD)

1) Screw off the nut first.



2)



6

Mounting the Assemble the Adaptor Plate to screen

Fix adapter plate with four philips head screw as shown Fig.3.1 .

Fix the extension bars onto the adapter plate with the selected mounting screws ,this can make the vesa support up to 600x400,screws as shown Fig.3.2.

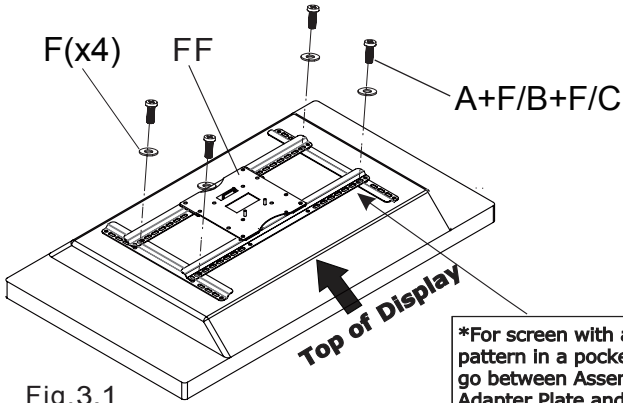


Fig.3.1

*For screen with a hole pattern in a pocket,spacer go between Assembly 200x200 Adapter Plate and screen.

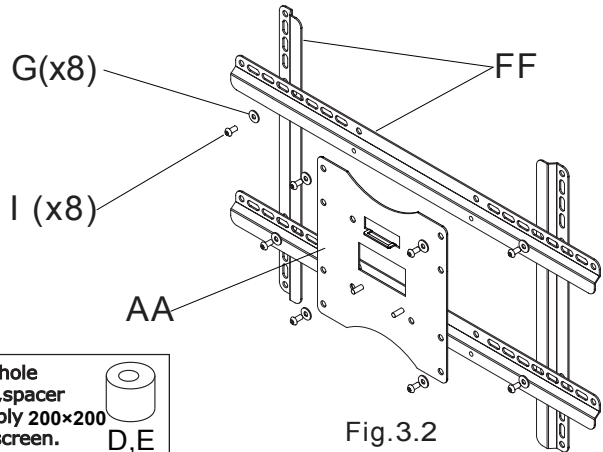
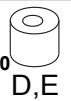
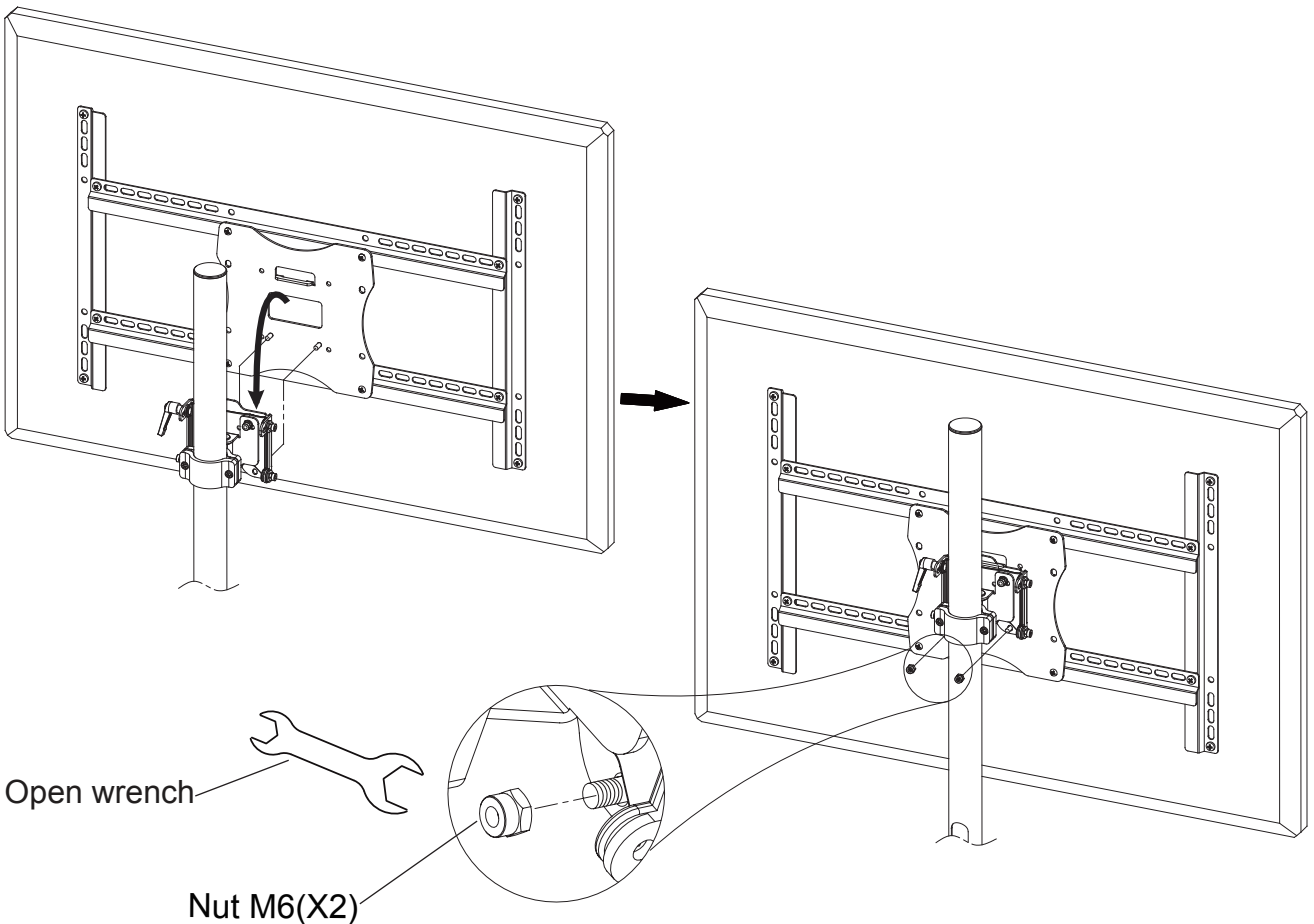


Fig.3.2

7

Mount display

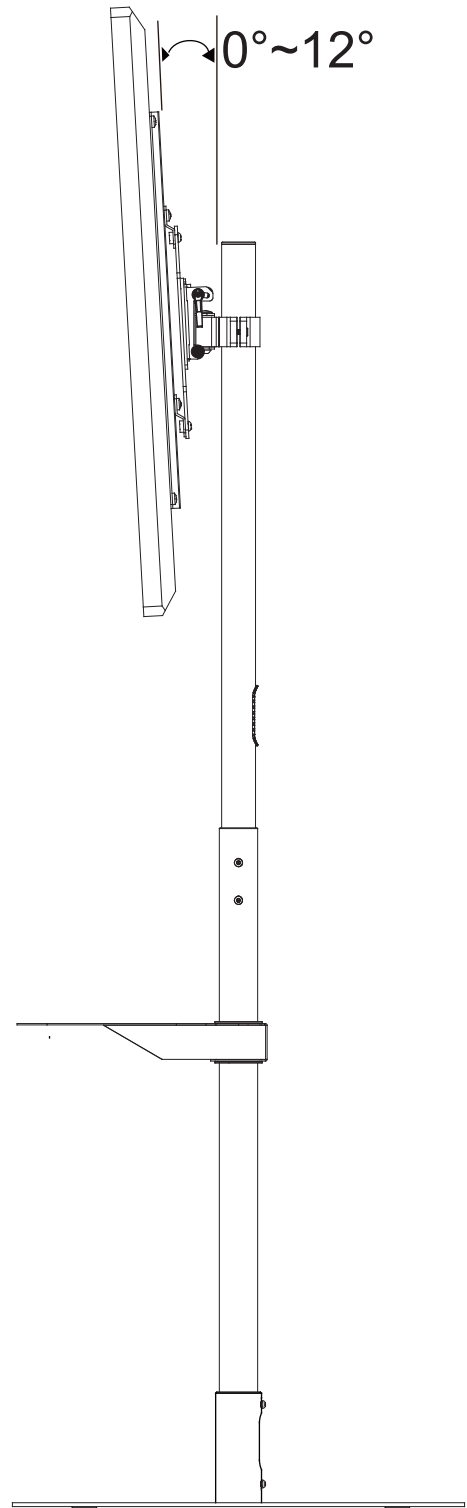
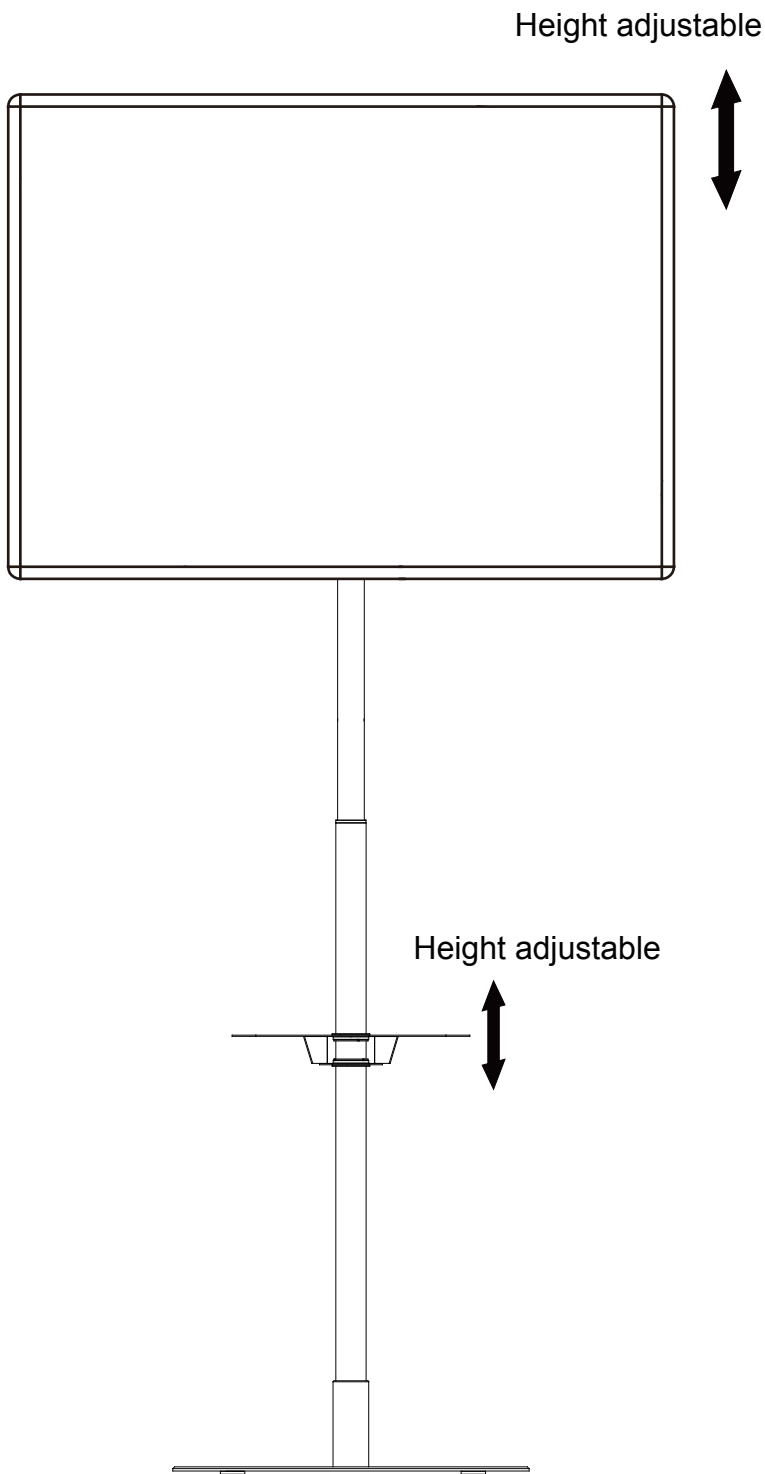
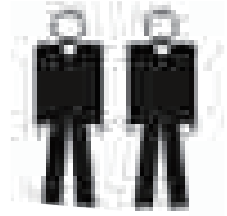
Mount the universal adapter kit onto display .



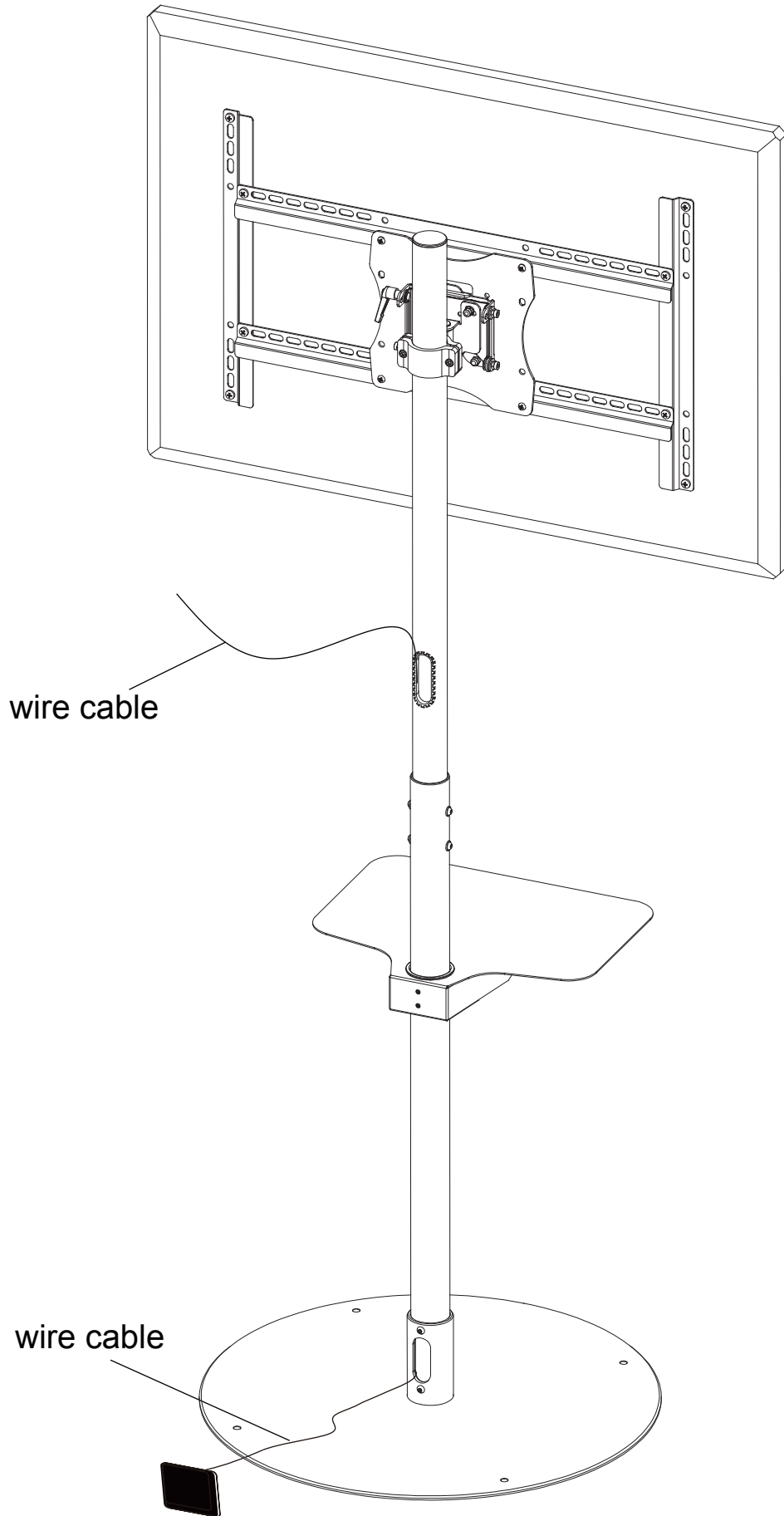
8

Adjust angle

Second person will be required to assist !



9 Using cable management



10

Fix the stand to the floor(Optional)

