

# AMPLI VOX<sup>®</sup>

PORTABLE SOUND SYSTEMS

## User Guide

### Mega Hailer S680 / SW680 / SW685 Battery Powered PA System with Bluetooth<sup>™</sup>

**READ FIRST ABOUT BATTERY OPERATION!**

BY OBSERVING A FEW SIMPLE RULES, YOU CAN EXTEND THE LIFESPAN OF THE SEALED LEAD ACID (SLA) BATTERIES THAT OPERATE YOUR AMPLI VOX BATTERY POWERED PORTABLE PA SYSTEM OR ACCESSORY:

- ALWAYS KEEP YOUR AMPLI VOX PORTABLE PA SYSTEM PLUGGED IN AND CHARGING WHEN NOT IN USE.
- FOR LONG TERM STORAGE (OVER 1 MONTH) WE RECOMMEND DISCONNECTING THE SLA BATTERIES TO AVOID GRADUAL, CONTINUOUS DISCHARGE.
- ALWAYS STORE SLA BATTERIES IN A CHARGED CONDITION WHEN REMOVED FROM SERVICE.
- FOR SLA BATTERIES IN STORAGE, APPLY A TOPPING CHARGE EVERY SIX MONTHS.
- AVOID REPEATED DEEP DISCHARGES. THIS PRACTICE WILL CUT THE LIFE OF THE BATTERY SIGNIFICANTLY.
- AVOID OPERATING SLA BATTERIES AT ELEVATED AMBIENT TEMPERATURES.
- BATTERY STATUS INDICATOR - RED = NO BATTERY POWER, YELLOW / ORANGE= ABOUT 4 HOURS LEFT. CHARGE BATTERY OVERNIGHT FOR BEST RESULTS.



Made in the USA

TABLE OF CONTENTS

SAFETY INSTRUCTIONS ..... 2

WHAT'S IN THE BOX ..... 3

SPECIFICATIONS ..... 3

BACK PANEL / AUDIO CONTROLS ..... 4

WIRELESS RECEIVER ..... 5

WIRELESS HANDHELD MICROPHONE ..... 5

BLUETOOTH ..... 6


BATTERY COMPARTMENT ..... 9

SPEAKER STAND MOUNT ..... 8

WIRELESS SPEAKER TRANSMITTER ..... 9

TROUBLESHOOTING / SERVICING..... 10

WARRANTY..... 11

Thank you for choosing one of the **Mega Hailer Series PA Systems** with  Bluetooth<sup>™</sup> from *AmpliVox Portable Sound Systems*.

We are excited in introducing this truly unique system. Our system combines flexibility with functionality. Please refer to this user guide as you enjoy the unique capabilities of another quality product from *AmpliVox Portable Sound Systems*.

We encourage you to visit our website [www.ampli.com](http://www.ampli.com) to register your product for its warranty coverage, sign up to receive our newsletter, download our catalog, and learn more about the complete line of *AmpliVox* audio visual products,

*The Bluetooth<sup>®</sup> word mark and logos are registered trademarks owned by Bluetooth SIG, Inc. and any use of such marks by AmpliVox Portable Sound Systems is under license.*

## IMPORTANT SAFETY INSTRUCTIONS

Before using this product, read the instruction manual for important safety information. Please retain this manual for future reference and warranty information.

### Cleaning

When cleaning the device, please use a soft, dry cloth. Never use benzene, paint-thinner, or other chemicals on the device.

### Location

Place the device in stable location, so it will not fall causing damage to the device or bodily harm.

### Intended use

The product may only be used with the original parts intended for it. The intended use includes adherence to the specified installation instructions. The manufacturer accepts no liability for damage arising due to improper use.

**WARNING:** Changes or modifications to this unit not expressly approved by the party responsible for compliance could void the user's authority to operate the equipment.

## IMPORTANT

This device complies with Part 15 of the FCC Rules. Operation is subject to the following two conditions: (1) This device may not cause harmful interference, and (2) this device must accept any interference received, including interference that may cause undesired operation. The unit's circuitry may cause interference to nearby radios. To prevent interference, either switch the unit off or move away from the affected radio.

NOTE: This equipment complies within the limits for a class B digital device, pursuant to Part 15 of the FCC Rules. These limits are designed to provide reasonable protection against harmful interference in a residential installation. This equipment generates, uses and can radiate radio frequency energy and, if not installed and used in accordance with the instructions, may cause harmful interference to radio communications. However, there is no guarantee that interference will not occur in a particular installation. If this equipment does cause harmful interference to radio or television reception, which can be determined by turning the equipment off and on, the user is encouraged to try to correct the interference by one or more of the following measures:

- Increase the separation between the equipment and receiver.
- Connect the equipment into an outlet on a circuit different from that to which the receiver is connected.

NOTE: Shielded cables may be required to be used with this unit to ensure compliance with the Class B FCC limits.

**SW680 Model Shown**



- **Mega Hailer PA**
- **Wireless Handheld Microphone w/ Transmitter (not shown)**
- **Universal Power Supply with North America IEC Power Cord**
- **Shoulder Strap**

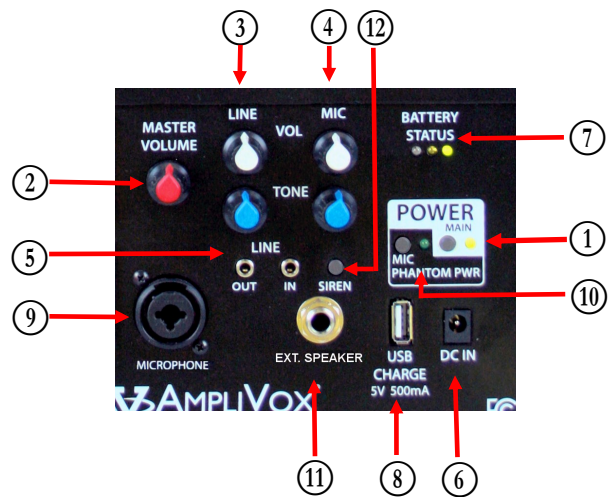
**S680 / SW680 / SW685 SPECIFICATIONS**

<b>Rated Power Output:</b>	50 W RMS	<b>Wireless PA Frequency:</b>	16 preset channels.
<b>Speaker:</b>	6" X 10" Horn	<b>Wireless Range:</b>	Up to 300 Feet (91 meters)
<b>Frequency Response:</b>	200 Hz to 15 kHz	<b>Bluetooth™ Range:</b>	Up to 30 Feet
<b>Sensitivity:</b>	124 dB SPL @ 1 W / 1 M	<b>AC Power:</b>	100-240 V Auto sensing, 50/60 Hz
<b>PA Battery:</b>	Two 12 volt rechargeable Sealed Lead Acid Batteries (SLA), 2.9 AH, User accessible and replaceable	<b>Microphone Input:</b>	1/4" (6.3mm)
<b>USB Charger:</b>	5V / 500mA	<b>Weight:</b>	15 lbs. (with battery) 6.8 kgs
		<b>Dimensions :</b>	12 1/2" W x 14" H x 10" D



**AUDIO CONTROLS**

- **POWER SWITCH ①** : Press to turn ON. Power LED and Battery Level Meter ⑨ will light.
- **MASTER VOLUME ②** : Rotate knob clockwise to increase volume of Hailer to desired level.
- **LINE ③ / MICROPHONE ④, VOLUME / TONE CONTROLS ③** : Work separately from **MASTER VOLUME**.
- Rotate knob clockwise to increase **VOLUME**. Turn **TONE** knob counter-clockwise for more bass or clockwise for more treble.
- **LINE IN / OUT ⑤** : 3.5mm jacks for other audio devices. Use **LINE OUT** for connecting to **AIR VOX Sound Projector**.
- **BATTERY CHARGER / DC IN ⑥** : To charge the battery, connect the Hailer to 110-220VAC using the supplied power cord and AC Adapter. The battery will charge when unit is operating with AC power, **HOWEVER, the unit will charge faster with the power switch in the “off” position. Charging time is about 7 hours.**



**The Hailer should be plugged in and charging when not in use to maximize battery life. Recharging the Hailer only when the battery status light is orange or red will shorten the useful life of the batteries.**

- **BATTERY STATUS METER ⑦** : The color of the light indicates the condition of the battery. Red – battery low, recharge immediately; Yellow/Orange – battery at 50% should be recharged before use. Green - fully charged.

**A full charge should give you up to 10 hours of operating time ( less if using for music).**

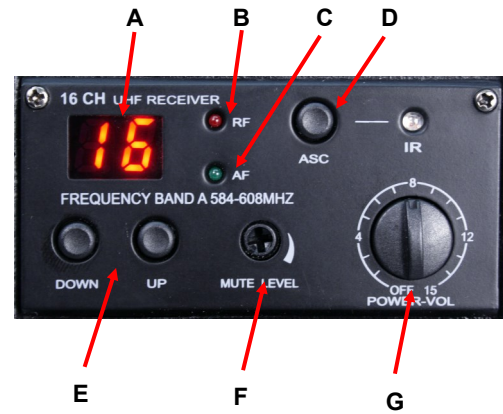
- **USB CHARGING ⑧** : A 5V, 500mA charging connector has been provided to help maintain your battery in a cell phone, tablet or computer while in use with the PA speaker.

- **WIRED MICROPHONE INPUT ⑨** : Combination XLR / 1/4" connector (this jack will accept either type microphone). If you plug in a line level device into mic level the sound will be loud and distorted. A microphone with an XLR connector is typically Mic Level. A microphone with a 1/4" connector is typically Line LEVEL.
- **PHANTOM POWER ⑩** : When using a Phantom Microphone press button to activate circuitry.
- **EXTERNAL SPEAKER JACK ⑪** : 1/4" output jack. Use for connecting to a **PASSIVE SPEAKER**.
- **SIREN BUTTON ⑫** : Single - Variable tone @125 dB. Push and hold.

## 16 CHANNEL UHF WIRELESS

### WIRELESS RECEIVER PANEL

- Channel Display (A)
- RF - Radio Frequency Indicator (B)
- AF - Audio Frequency Indicator (C)
- ASC / IR Auto Channel Select (Handheld Microphone Only) (D)
- Select Buttons - Manual Channel Selection (E)
- Mute Level Adjustment (F)
- Volume Control (G)



### RECEIVER / TRANSMITTER SETUP:

- The receiver has its own **POWER / VOLUME** Control (G). First make sure that you have screwed on the UHF antenna. Turn Power On. A Frequency Channel will appear in the Channel Display (A). Press Select Buttons (E) to select a channel. Channel number must match channel number on wireless transmitter.

## WIRELESS HANDHELD MICROPHONE - MODEL SW685 ONLY

If you are using the AmpliVox S1695 Wireless Handheld Microphone Transmitter, screw off the lower bottom section of microphone and insert 2 - "AA" 1.5 Volt alkaline batteries.

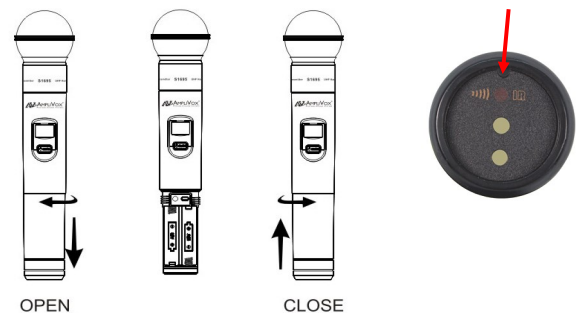
**IMPORTANT:** Because the microphone has an **AUTO SYNC** function, you first select channel you wish to use on the receiver. Then press the ASC button (D), the IR light will start to flash. Turn on microphone and point end (6) of microphone at the flashing IR light on receiver and the microphone will auto sync to the same channel as selected on the receiver.

### BATTERIES

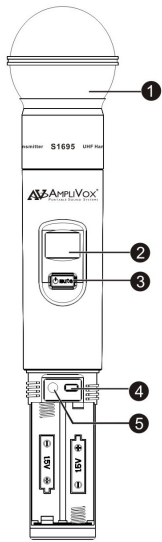
1. Hold the body of microphone in hand and twist off bottom section of microphone.
2. Insert two "AA" batteries.
3. Twist bottom section back on to microphone.

### BATTERY STATUS

The life expectancy of the two batteries is about 10 hours. When the "BATTERY" symbol on the display screen keeps flashing or light level of screen gets very dim, the batteries should be replaced immediately.



## Microphone Operation and Status Display



BATTERY COVER REMOVED

### Functions

- 1) **Interchangeable Microphone Head**
- 2) **LCD Screen**
- 3) **Power / Mute Control Switch**
- 4) **Select Button**
- 5) **Microphone Input Sensitivity Adjustment**—is used to set the gain of microphone. If you are a soft talking speaker you will need to turn the control counter clockwise. Turn clockwise if you are a loud talker. Use plastic screwdriver that is supplied.



- **TURN ON MICROPHONE:** Press and hold the “POWER/MUTE” (3) button until LCD screen lights up.
- **TO MUTE:** Press “POWER/MUTE” button once to MUTE. Channel number will flash when muted. Press button again once to remove “MUTE”.
- **TURN OFF MICROPHONE:** Press and hold the “POWER/MUTE” (3) button for 2 seconds to turn microphone “OFF”.
- **SELECT CHANNEL (Manual):** Press and hold the “SELECT” (4) button for 2 seconds until you only see the word Channel and channel number. To change channel, when flashing, press the “SELECT” (4) button until you reach the desired channel. Flashing will stop after 10 seconds and channel is now set.
- **LOCK / UNLOCK CHANNEL:** Press the “POWER/MUTE” (3) button and “SELECT” button at the same time to lock or unlock channel. When locked, channel cannot be changed. “LOCKED” symbol appears in upper left-hand corner.

## BLUETOOTH MODULE

- Turn power switch (24) on, press (22) button to turn Bluetooth pairing on and hold for 4 seconds to enter into the pairing mode.
- The **RED LED** (20) will start to flash, searching for a Bluetooth signal. Search function will stay active for 10 minutes. If no signal is found, this function will shut off. During the search function turn on your Bluetooth device for pairing. On your Bluetooth menu of your device, choose AmpliVox, AmpliVox S1500 or use pin code 0000. Once paired, red LED will stay on.
- Use this button (21) to move to the next song or (23) to play previous song. Use (22) to pause. When paused you will need to press again to start playing.
- **VOLUME CONTROL** (24) Use to adjust the volume of the Bluetooth material.
- **NOTE:** Always turn off Bluetooth power before turning main power off. If you turn off main power first, you will need to cycle thru a power off/on the next time you use the Bluetooth module.



“The Bluetooth® word mark and logos are registered trademarks owned by Bluetooth SIG, Inc. and any use of such marks by Amplivox Portable Sound Systems is under license. Other trademarks and trade names are those of their respective owners.

## BATTERY COMPARTMENT

### BATTERY REPLACEMENT

The AmpliVox Hailer has two (2) SLA (Sealed Lead Acid) batteries located at the front behind the metal plate that has the AmpliVox logo (Fig. 1).

To access the battery compartment, remove the eight (8) screws and remove plate. Set aside.

You will now notice foam blocks that hold the two batteries in place preventing them from bouncing around in the compartment (Fig. 2).

Remove the foam blocks and set aside. Slowly pull out the batteries one at a time. Because the batteries have a wiring harness attached they will only pull out so far.

Stand batteries up as shown (Fig. 3). You will now see on each battery there are two wires, one RED (+) and one BLACK (-). The RED wire is connected to the battery terminal that has a RED DOT. Remove both wires from each battery.

You will notice that there is a black tube also attached to these wires. This is a fuse holder (Fig. 4). The fuse inside is a type 2AG Glass Body. These fuses used to be very common in automobiles and are sold at automotive part stores if you need to replace it. This fuse acts as a protection circuit should you attach the wires incorrectly to the battery.

Take your new batteries and reconnect. RED wire to RED DOT (+) on battery. BLACK wire to other terminal (-).

Once wires are firmly attached to the terminals lay the batteries on their side and slide back into battery compartment. Remember to also install the foam blocks as shown in (Fig. 2).

Take metal plate and screw back into place using the eight (8) screws.

**Charge new batteries 24 hours before using.**

#### IMPORTANT BATTERY INFORMATION

All SLA batteries self-discharge at a rate of approximately 5% per month. If the capacity loss, due to self-discharge is not compensated for by recharging, the battery capacity may not be recoverable. The batteries will have to be replaced. Charge batteries at least every six (6) months, or charge after every use.

Your Hailer has a "SMART" charging circuit. Leaving the battery charger always connected is OK. It will not overcharge your batteries.

Only use the charger that came with the Hailer. Using any other charger may damage batteries.



Fig. 1



Fig. 2



Fig. 3

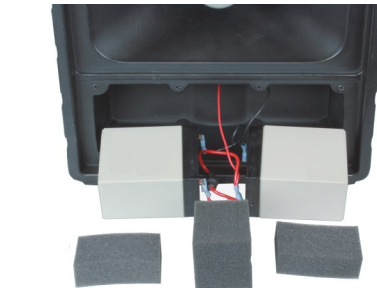
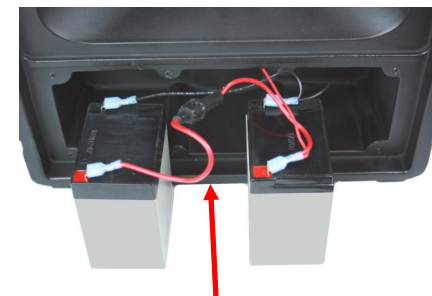


Fig. 4



Fuse Holder

## SPEAKER STAND MOUNT

---

Mounting a speaker onto a tripod can be useful for concerts and presentations in which the speaker would be better positioned off the ground. A better way for mobile audio to be heard is if the audio is up in the air and above the crowd, setting up your sound system or speakers on a tripod accomplishes that task.

Your Hailer has a built-in 1 3/8" (35mm) dia. pole mount for mounting on standard speaker tripods (AmpliVox Model S1080 or S1090).





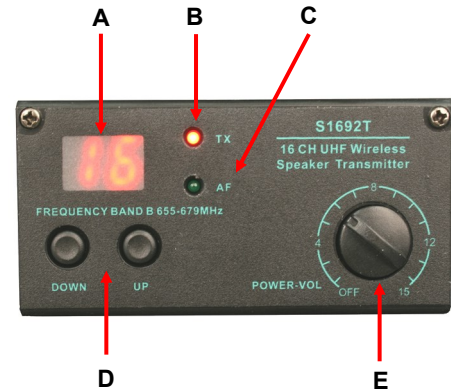
# WIRELESS SPEAKER TRANSMITTER S1692T (OPTIONALEQUIPMENT)

OPERATES ON DIFFERENT FREQUENCIES THAN AMPLIVOX WIRELESS MICROPHONE / RECEIVER

## 16 CH UHF WIRELESS SPEAKER TRANSMITTER

### FEATURES

- Channel Display (A) Frequency: 655 - 679 MHz
- TX - Radio Frequency Indicator (B) lights when turned on
- AF - Audio Frequency Indicator (C) lights when transmitting
- Select Buttons - Manual Channel Selection (D) Up / Down
- Power / Volume Control (E)

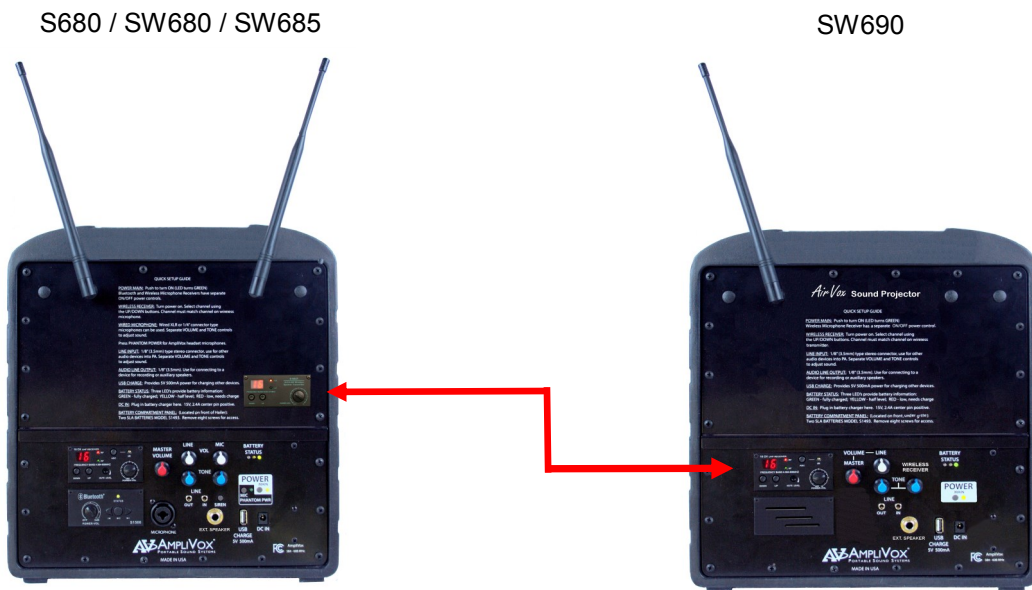


### SETUP

- The transmitter has its own **POWER / VOLUME** Control (E). First make sure that you have screwed on the UHF antenna (**Position #4**). Turn Main Power On of the **S680 / SW680 / SW685**, then turn transmitter Power On (E). A Frequency Channel will appear in the Channel Display (A). Press Select Buttons (D) to select a channel. Channel number must match channel number on wireless receiver of the **AIR Vox Speaker**. **EXAMPLE: Select Channel 10 on transmitter (S1692T) and select Channel 10 on the speaker receiver of the SW690.** The AF LED will light when transmitting signal to receiver of the **SW690**. RF LED of receiver (SW690) will light when channels are matched and receiving a signal.

### OPERATE

- **S680 / SW680 / SW685**: turn on main power / wireless microphone receiver / wireless speaker transmitter / wireless microphone.
- **SW690**: turn on main power / wireless speaker receiver.
- To start, set all volume controls of the wireless devices to **MID POINT**. Test speaking into the wireless microphone and adjust level of main volume controls first to the desired level. If you feel that you need to increase sound level then adjust levels of the wireless devices.



Model SW680 Shown  
With Wireless Speaker Transmitter

# Troubleshooting & Servicing

Do not attempt to service or repair the device yourself. Refer all servicing to qualified service personnel. Do not attempt to modify the device in anyway. Doing so could invalidate your warranty.

---

## PROBLEM & ITEMS TO CHECK

### UNIT WILL NOT TURN ON

- Is unit plugged in?
- Are batteries charged?

### UNIT OPERATES ON AC BUT NOT BATTERY

- Charge battery
- Replace battery

### SOUND IS MUFFLED

- Tone too low

### FEEDBACK: A LOUD SQUEALING, SHRILL OR HOWLING SOUND THAT IS SELF GENERATED

- Feedback occurs when a microphone is too close to the speaker or the microphone volume is too high, or the microphone is pointed towards the speaker. It is also caused by sound reflecting off hard surfaces.
- Reduce or eliminate Feedback by
  - Pointing the microphone in a different direction
  - Keeping the microphone BEHIND the speakers
  - Turn down the volume levels

### POWER IS ON, BUT NO SOUND

- Check main volume level.
- If using wireless, be sure receiver and transmitter battery is installed and both units are turned on.

### MICROPHONE SIGNAL IS WEAK

- If microphone has batteries, check batteries.
- Check cables/connectors.

### WIRELESS MIC DOES NOT WORK

- Check that transmitter batteries are fully charged and ensure transmitter is on.
- Does green "signal" LED light when transmitter is turned on?
- Are the transmitter and receiver on the same channel? (1-16)

### WIRELESS MIC CUTS IN AND OUT

- Is unit visible (line of sight) from user? If not, move unit into view when using wireless microphone.
- Does the green "signal" LED on receiver goes out when signal drops out? Check batteries in Microphone transmitter.
- Distance is not very far. On receiver, turn **mute level** counter clockwise as far as it can go (minimum level).

### BATTERY WILL NOT HOLD CHARGE

- Replace Main Batteries every 1-2 years if unit is not left charging when not in use.
- A full charge is best obtained when the unit is off and plugged into the AC outlet for several hours. After a year or two the battery may need to be replaced. Batteries are available from AmpliVox.

**NEED HELP? Call 800-267-5486**

## DISCLAIMER

AmpliVox Portable Sound Systems, operates a policy of continuous development. AmpliVox reserves the right to make changes and improvements to any of the products described in this document without prior notice.

Under no circumstances shall AmpliVox be responsible for any loss of data or income or any special, incidental, consequential or indirect damages howsoever caused.

In some countries there may be some restrictions in using this equipment. Please check with your local radio frequency authorities.

## WARRANTY

### Limited Six (6) -Year Warranty

AmpliVox warrants this product to be free from defects in materials and workmanship (subject to the terms set forth below) for a period of six (6) years from the date of purchase ("Warranty Period"). All accessories and the batteries are warrantee for 1 year. Accessories are; wireless and wired microphones, receivers and transmitters, CD players, cassette players, and digital players.

During the Warranty Period, AmpliVox will repair or replace (at AmpliVox's discretion) this product or any defective parts ("Warranty Service").

Repair or replacement under the terms of this warranty does not give right to any extension or a new beginning of the period of warranty.

## CLAIMS UNDER THE WARRANTY

To obtain Warranty Service, **contact AmpliVox (800-267-5486)** to be assigned a **Repair Authorization number (RA#)**. After receiving a RA#, the defective unit is to be returned to AmpliVox in either its original packaging or packaging affording an equal degree of protection. You will bear the cost of shipping the product to AmpliVox. If the product is covered by the warranty, AmpliVox will bear the cost of shipping product back to you after the completion of service under this warranty.

**Return shipping will be charged to you for products not covered by the warranty or requiring no warranty repair.**

The following information must be presented to obtain Warranty Service: **(a)** the RA# must be clearly and legibility marked on the outside of shipping carton, **(b)** proof of purchase, which clearly indicates the name and address of the seller, the date of purchase and the product type, which is evidence that this product is within the Warranty Period. Please further include **(c)** your return address, **(d)** daytime telephone number, and **(e)** reason for return.

## LIMITATION OF WARRANTY

This warranty is only valid for the original purchaser and will automatically terminate prior to expiration if this product is sold or otherwise transferred to another party. The warranty provided by AmpliVox in this statement applies only to products purchased for use, and not for resale. It does not apply to open box purchases, which are sold "as is" and without any warranty. Specifically exempt from warranty are limited-life consumable components subject to normal wear and tear, such as microphone windscreens, ear cushions, modular plugs, ear tips, decorative finishes, batteries, and other accessories. This warranty is invalid if the factory-applied serial number, date code label, or product label has been altered or removed from this product. This Warranty does not cover cosmetic damage or damage due to misuse, abuse, negligence, Acts of Nature, accident, disassembling or modification of, or to any part of, the product. This Warranty does not cover damage due to improper operation, maintenance or installation, or attempted repair by anyone other than AmpliVox. Any unauthorized repairs will void this warranty.

REPAIRS OR REPLACEMENTS AS PROVIDED UNDER THIS WARRANTY ARE THE EXCLUSIVE REMEDY OF THE CONSUMER. AMPLIVOX SHALL NOT BE LIABLE FOR ANY INCIDENTAL OR CONSEQUENTIAL DAMAGES FOR BREACH OF ANY EXPRESS OR IMPLIED WARRANTY ON THIS PRODUCT. EXCEPT TO THE EXTENT PROHIBITED BY LAW, THIS WARRANTY IS EXCLUSIVE AND IN LIEU OF ALL OTHER EXPRESS AND IMPLIED WARRANTIES WHAT SO EVER, INCLUDING BUT NOT LIMITED TO THE WARRANTY OF MERCHANTABILITY AND FITNESS FOR A PRACTICAL PURPOSE.

**NOTE!** This warranty gives you specific legal rights. You may have other rights which vary from location to location. Some jurisdictions do not allow the exclusion or limitation of incidental or consequential damages or implied warranties, so the above exclusions may not apply to you. This warranty does not affect your legal (statutory) rights under your applicable national or local laws.



Dispose of the product according to local standards and regulations

# NOTES

