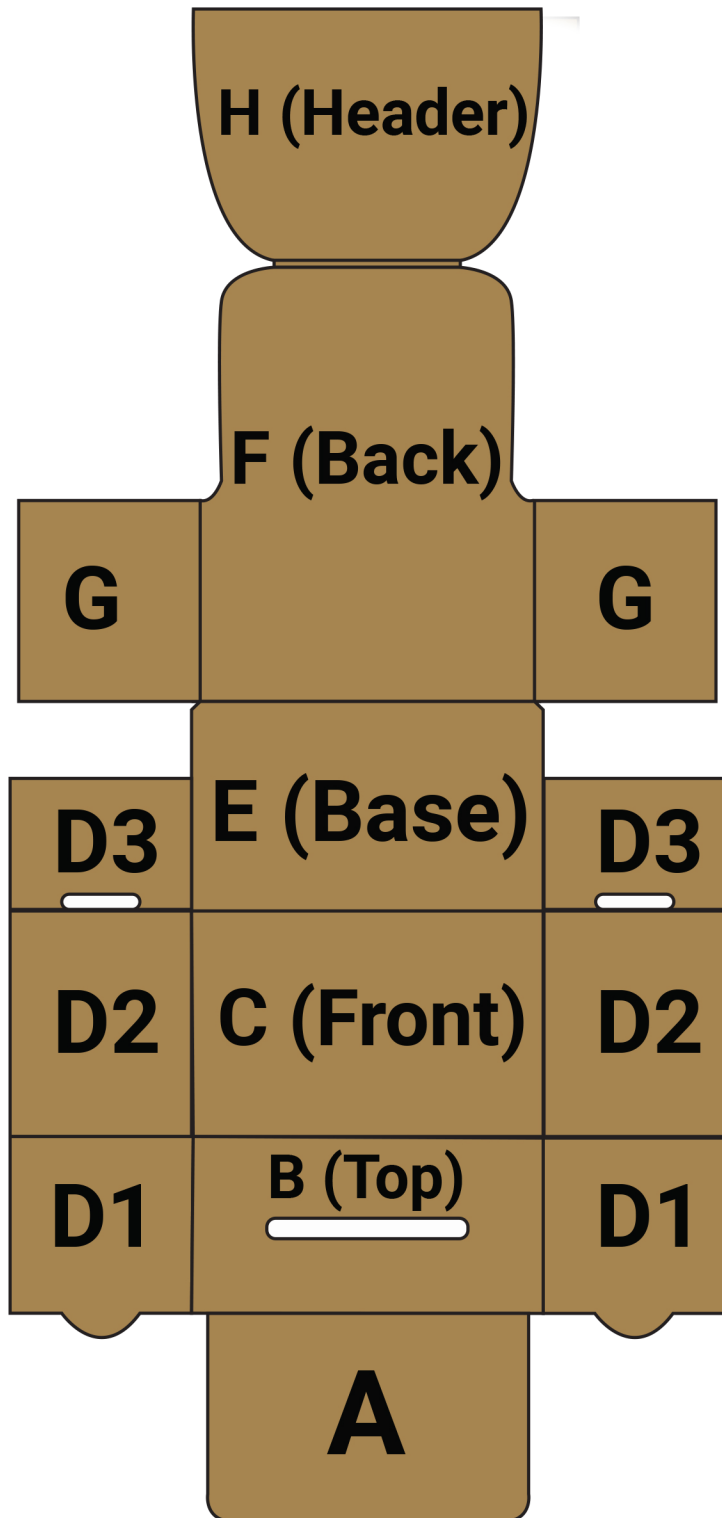


DISPLAYS2GO

WCSBBV2 Cardboard Ballot Box Assembly Instructions



Step 1: Raise Side C so that Side E is flat on table to create the base. Bring Flaps D inwards so that D3 are flat on E and D2 are straight up. Leave D1 loose.

Step 2: Raise Side F and bring Flaps G inwards, laying flat against Flaps D2.

Step 3: Lower Flaps D1 and tuck into notches to create the sides.

Step 4: Lower Flap H, laying flat against Side F to create the header.

Step 5: Raise Side B and tuck Flap A into the box to create the top.