

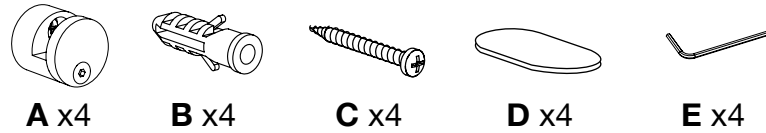
Wall-mounted Glass Board Instructions

Parts List Note: Hardware provided is for drywall installation. If attaching to other material fasteners are to be furnished by other.

Tools Required

12/17/13

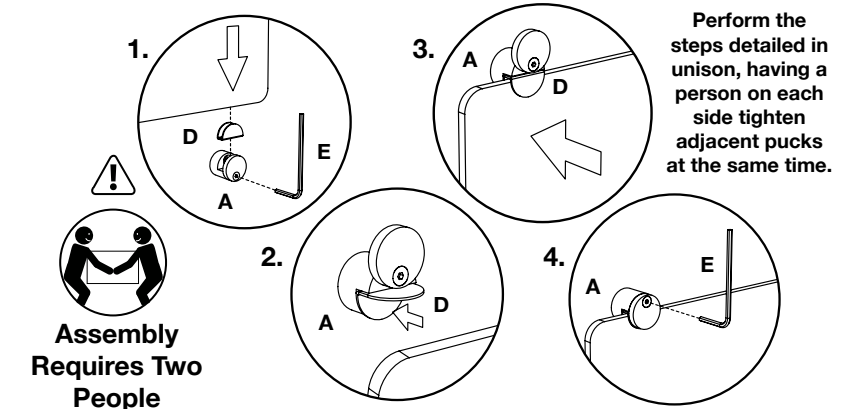
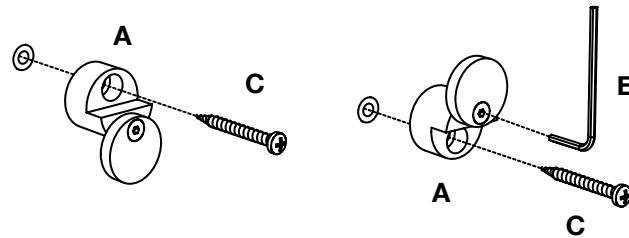
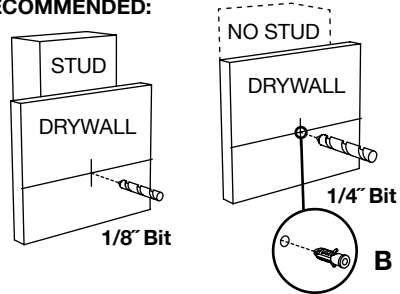
WARNING: Two people are required to build this Glass Board. Use care when handling the Glass Board.



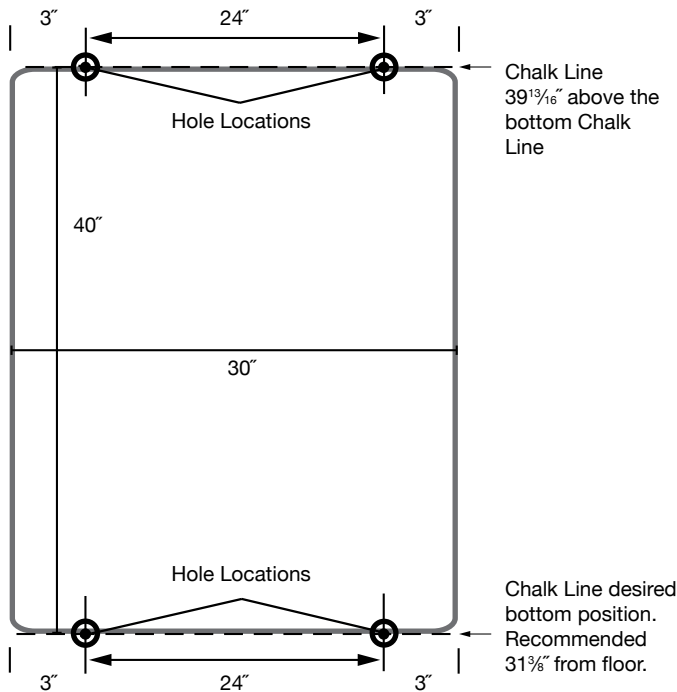
- Tape Measure
- Chalk Line
- Drill
- 1/4" Drill Bit (No Stud)
- 1/8" Drill Bit (Stud)
- Extended Drive Phillips
- Hammer
- Level
- Stud Finder
- Pencil

- 1** Snap two horizontal chalk lines at the shown height. Drill four holes as shown (Stud is recommended). If there is no stud Hammer drywall anchors **B** into holes.
- 2** Secure Pucks **A** at the bottom like shown with screw **C** make sure the positioning is level and the notch is facing up, leave the clamp facing down.
- 3** Secure Pucks **A** at the top with screw **C** make sure the positioning is level and the notch is facing down, Secure the clamp with wrench **E** so the clamp is locked, facing up.
- 4** Semi-tighten the Puck clamps **A** in the up position and place the silicone inserts **D** into the notches. Carefully lift the glass board so that it rests on top of the inserts, seated fully into the notches, then tighten the clamps.
- 5** Wedge the silicone inserts **D** into the open notch **A**. Carefully push the glass board into the open notch and fold the silicone over the glass and tighten the clamps fully. Assembly Complete!

RECOMMENDED:



Vertical Orientation



30" x 40" Board

Horizontal Orientation

